

ROLAND'S PIANOFORTE TUTOR · THE BEST IN THE WORLD.

English Fingering.

Continental Fingering.

N° 2070.

Feldman's 6^D Edition

My Sweet Helene

Song Waltz



Ukulele
Acc.



Words by
AL BRYAN
Music by
GEO. W. MEYER

As sung by
Carmel Meyers
in the
**FIRST NATIONAL &
VITAPHONE PICTURE
CAREERS**

LONDON · ENGLAND,
B. FELDMAN & C^o,
125, 127, 129, Shaftesbury Avenue, W.C.2.
NEW YORK · M. WITMARK & SONS

Copyright.

Price 6^D-net.

MY SWEET HELENE.

TUNE
4 3 2 1
G C E A

Ukulele arranged by R. S. STODDON.

Words by
AL BRYAN.

Music by
GEO. W. MEYER.

Moderato

KEY F

Your two arms will al-ways en-fold me, Making my life worth while;.....
 What are clouds if you're always near me, Smiling my cares a - way?

§ ad lib.

C.t.

Your two arms for ev - er will hold me, That's why I wear a smile.....
 Rain or shine, you al-ways can cheer me, Making De - cem - ber, May.....

REFRAIN

Hel - ene, My sweet Hel - ene,..... The love - birds sing your

name,..... And my heart is al-ways singing too,..... Just a song.....

..... that is on-ly for you. Hel - ene, My sweet Hel - ene,..... My

sun - shine af - ter rain,..... You'll al - ways be the same to

me, Hel - ene, My sweet Hel - ene. Hel - ene.....

L.H. D.S.

My sweet Helene.

WARNER
BROS. &

VITAPHONE
REG. TRADE MARK.

SINGING
PICTURES

FIRST
NATIONAL

VITAPHONE
REG. TRADE MARK.

SINGING
PICTURES

THEME SONGS

AM I BLUE?

by GRANT CLARKE and HARRY AKST
from ON WITH THE SHOW — Sung by ETHEL WATERS



Am I blue? — Am I blue? — Ain't these tears — in these eyes — tel-lin' you?

WISHING AND WAITING FOR LOVE

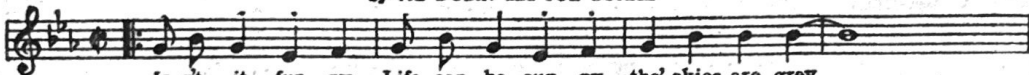
by GRANT CLARKE and HARRY AKST
from BROADWAY BABIES



I'm al-ways'round by my own-some, I'm miss-in' kiss-in' and want some,

LOVE WILL FIND A WAY

from IN THE HEADLINES — starring MARION NIXON and GRANT WITHERS
by AL DUBIN and JOE BURKE



Is-nt it fun-ny, Life can be sun-ny, tho' skies are grey, —

SMILING IRISH EYES

by HERMAN RUBY and RAY PERKINS
from SMILING IRISH EYES — starring COLLEEN MOORE



If I had a great trea - sure, If I had a great prize, Glad-ly I'd trade it for your

IF YOU WERE MINE

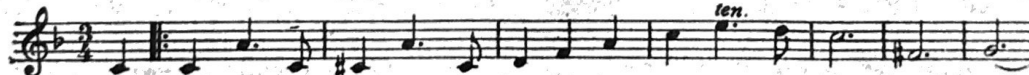
by AL. BRYAN and GEO. W. MEYERS
from TWIN BEDS



If you were mine, I'd find a lit - tle hide - a - way, If

I LOVE YOU, I HATE YOU

by AL. BRYAN and GEO. W. MEYER
Sung by CARMEL MEYERS in CAREERS



I love you, I hate you, and O how I hate me For lov - ing you: —

MY SONG OF THE NILE

by AL. BRYAN and GEO. W. MEYER
from PARASITES — starring RICHARD BARTHELMESS



Hear my Song of the Nile, Leave your sor-row and smile,

MAY BE OBTAINED FROM ALL MUSIC SELLERS
OR DIRECT FROM THE PUBLISHERS

B. FELDMAN & CO.

125, 127, 129, Shaftesbury Avenue, W.C. 2, London, England

M. WITMARK & SONS — NEW YORK