

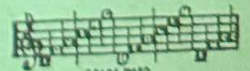
Irving Berlin

AND SO, GOODBYE

WORDS AND MUSIC BY
ALLIE WRUBEL



Irving Berlin, Inc.
MUSIC PUBLISHERS
1607 Broadway New York



MADE IN
USA

AND SO, GOODBYE

Words and Music
by
ALLIE WRUBEL

*) Letters over diagrams are names of the chords in original key and are adaptable to Banjo or Guitar.

*)Tune Ukulele
G C E A

Moderato

The piano introduction consists of two staves. The right hand starts with a triplet of eighth notes (G4, A4, B4) followed by a series of chords and melodic lines. The left hand provides a steady accompaniment with quarter and eighth notes. The tempo is marked 'Moderato' and the dynamics range from *f* to *mf*.

VOICE **F** **Db7** **Gmi** **C7**

Our dream, of love is end - ed, Blend - ed in - to the

The vocal line begins with a quarter rest followed by the lyrics. The piano accompaniment features chords and a melodic line in the right hand, with a bass line in the left hand.

mf

The piano accompaniment continues with chords and a melodic line in the right hand, and a bass line in the left hand. The dynamics are marked *mf*.

F **C7** **Gm** **C7** **F**

past. Gone is the hope we once knew;

The vocal line continues with the lyrics. The piano accompaniment features chords and a melodic line in the right hand, with a bass line in the left hand.

The piano accompaniment continues with chords and a melodic line in the right hand, and a bass line in the left hand.

Gmi **C7** **F** **Db7** **Gmi** **C7** **Gdim**

And tho' it's now Good - bye, love, My love ev - er will

The vocal line concludes with the lyrics. The piano accompaniment features chords and a melodic line in the right hand, with a bass line in the left hand.

The piano accompaniment concludes with chords and a melodic line in the right hand, and a bass line in the left hand.

Dmi G7 Dmi G7 C7

last, Deep in my heart there'll al-ways be you.

CHORUS F C7 F

AND SO, GOOD - BYE! Re - mem - ber I

Melody *p-f*

Db7 F Bb F

love you with all my heart, dear, But it is fa - ted that we must

C7 Db7 C7 F G mi F C dim C7 C aug

part, AND SO, GOOD - BYE! Oh,

WARNING!

Any one who copies the words or music of this song, or any portion thereof, will be criminally prosecuted, under section 28 of the United States Copyright Law, and section 441^b of the New York Penal Law.

4

F C7 F Db7

please don't cry, Re-mem-ber that we shared a love di-

F Bb F C7 Db7 C7

vine, dear, Tho' it could nev-er be yours and mine, With-out Good-bye;

F G mi F F7 Bb mi

Oh, love how I'll

Eb7 E7 Ab Ab7 C

yearn when you're not near to me, Oh, where shall I

Dmi G7 Gmi C7

turn for one so dear to me? _____

AND

Melody

F C F Db7

SO, _____ GOOD - BYE! _____ If it is for - ev - er or just a

F Bb F C7 Db7 C7

while, dear, Let us de - part with a tear, a smile, AND SO, GOOD-BYE..

1. F Dmi G7 Gmi C7 2. F Dbmi F

AND

Melody