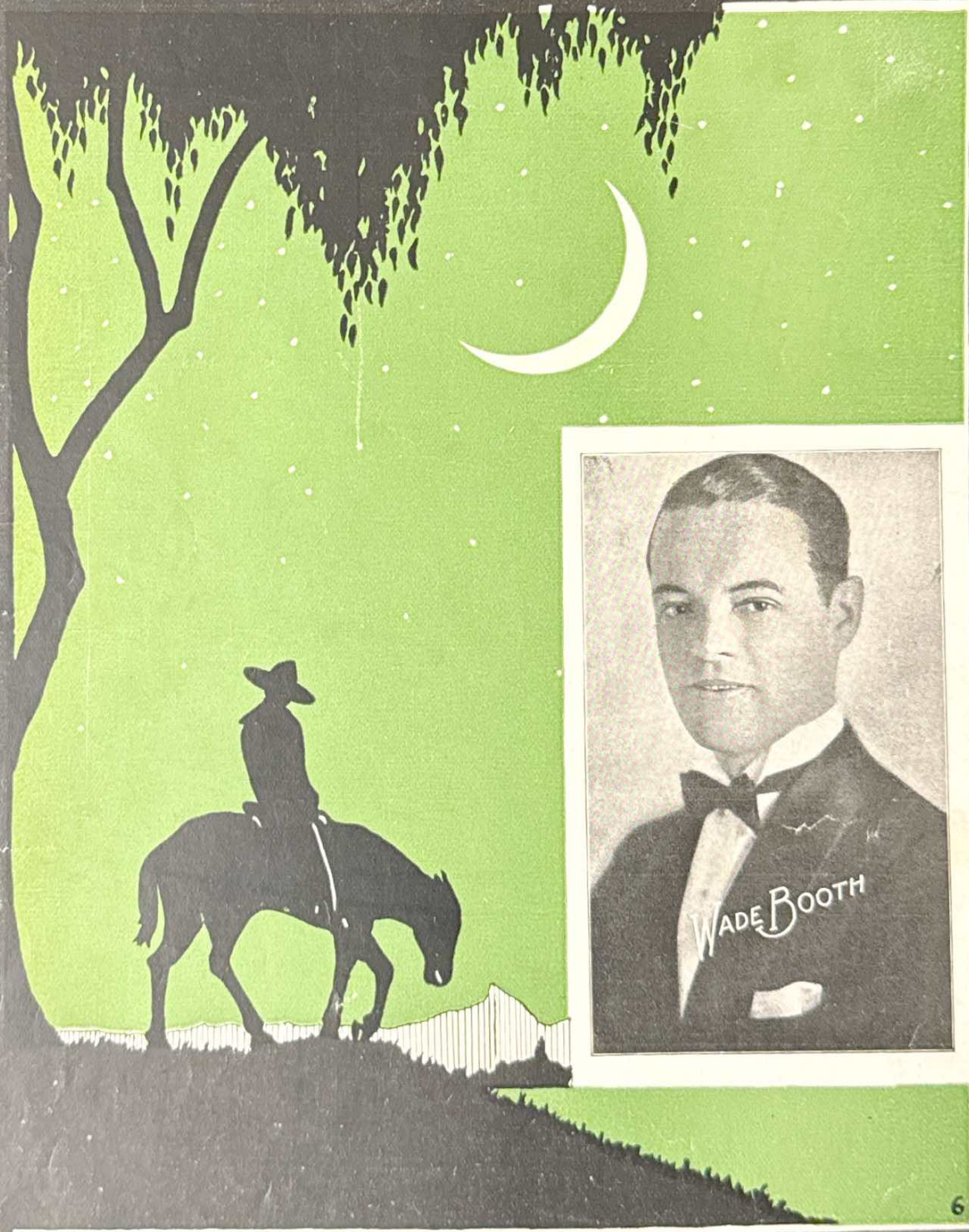


OPERATIC EDITION

ARIZONA STARS

SONG

Lyric by GEORGE LITTLE *Roberts* Music by CARL RUPP



MADE IN USA

JEROME H. REMICK & CO.
NEW YORK DETROIT

INGEMANN 23

ARIZONA STARS

SONG

Lyric by
GEORGE LITTLE

Music by
CARL RUPP

Valse lento

PIANO

mf

marc.

The piano introduction consists of two systems of music. The first system is in 3/4 time, featuring a melody in the right hand and a bass line in the left hand. The second system continues the piece with similar accompaniment.

VOICE

E b *C* *C* *C* *F* *C* *C* *C*

I'm way down East You're way out West
'Most ev - 'ry night When stars so bright

p

The vocal line is written on a single staff with lyrics underneath. The piano accompaniment continues below the vocal line.

D b *B b* *F* *M* *E b*

Lit - tle pal heart of mine
Fill my heart with love

The vocal line continues with lyrics. The piano accompaniment provides harmonic support.

528-4.

Copyright MCMXXIII by JEROME H. REMICK & CO., New York & Detroit

Copyright, Canada, MCMXXIII by Jerome H. Remick & Co.

Propiedad para la Republica Mexicana de Jerome H. Remick & Co., New York & Detroit. Depositada conforme a la ley
MADE IN U.S.A. Performing Rights Reserved

E♭ C C cresc. E♭ C C C

Stars up a -- bove Know of our love
Then I con - fess Love's hap - pi - ness

cresc.

C A♭ E F B♭

And they know I pine
To each star a - bove

E♭ poco accel. E♭ B♭ C D D D A♭ B♭

While seek - ing rest I turn to the West I
Whis - per your name and try to ex - plain The

poco accel.

Allegro C C rall. A♭ rit. E♭ F B♭

o pen my heart sing to the stars and whis - per
rea son I sing to the stars while dream - ing

a tempo rall. rit.

CHORUS

Ar - i - zo - na Stars to - night you shine Up -

Handwritten notes above staff: G Ab F# G F# G E F

p-mf

marc.

- on a lit - tle pal of mine

Handwritten notes above staff: Ab C Db D Eb B C

Cross the great di - vide Thru space and time Each

Handwritten notes above staff: Ab G Ab F# G F# G E F

mes - sage of the stars our hearts en - twine

Handwritten notes above staff: Bb G Ab B A F C Ab Bb

dolce

Some-time in June And June comes soon You'll bright-ly

shine on a hon - ey - moon Ar - i - zo - na

Stars so hear my plea And shine with all your

love-light for me me D.C.