

THE NEW YORK PUBLIC LIBRARY
ASTOR LENOX TILDEN FOUNDATION

WON'T YOU BE

GIRL

IN METAL

SHERRYS?

AS SUNG BY



WRITTEN BY
JULIE F. COCHRAN

6

PUBLISHED BY LEON TERRY, 154 WEST 57TH ST., NEW YORK

Aren't You The Girl I Met At Sherry's?

Words by
FELIX F. FEIST.Music by
JOEL P. CORIN.

Moderato.

Piano introduction in G major, 2/4 time, marked Moderato. The piece begins with a treble clef and a bass clef. The treble staff features a melodic line with eighth and sixteenth notes, while the bass staff provides a harmonic accompaniment with chords and single notes. A fortissimo (ff) dynamic marking is present in the bass staff.

Vocal line and piano accompaniment for the first line of lyrics. The vocal line is in a treble clef, and the piano accompaniment is in a bass clef. The tempo is marked Moderato. The lyrics are: "I have travelled man - y miles, I've re - I am not a keen ob - ser - ver, And per -". A piano (p) dynamic marking is shown in the piano accompaniment.

Vocal line and piano accompaniment for the second line of lyrics. The vocal line is in a treble clef, and the piano accompaniment is in a bass clef. The lyrics are: "ceived some pleas - ant smiles, With the gen - tle sex I've al - ways been a haps I don't de - serve her, But I don't pro - pose to let that in - ter -".

Vocal line and piano accompaniment for the third line of lyrics. The vocal line is in a treble clef, and the piano accompaniment is in a bass clef. The lyrics are: "pet, I've been luck - y you might say, But the fere, I'm de - ter - mined I shall win her, She was".

on her track, I want her back, say, "are - n't you the girl?"
 must be mine, that maid di - vine, at an - y sac - ri - fice.

rall.

Chorus. *p f*

Are - n't you the girl I met at Sher-ry's? Are - n't you the maid that smiled at

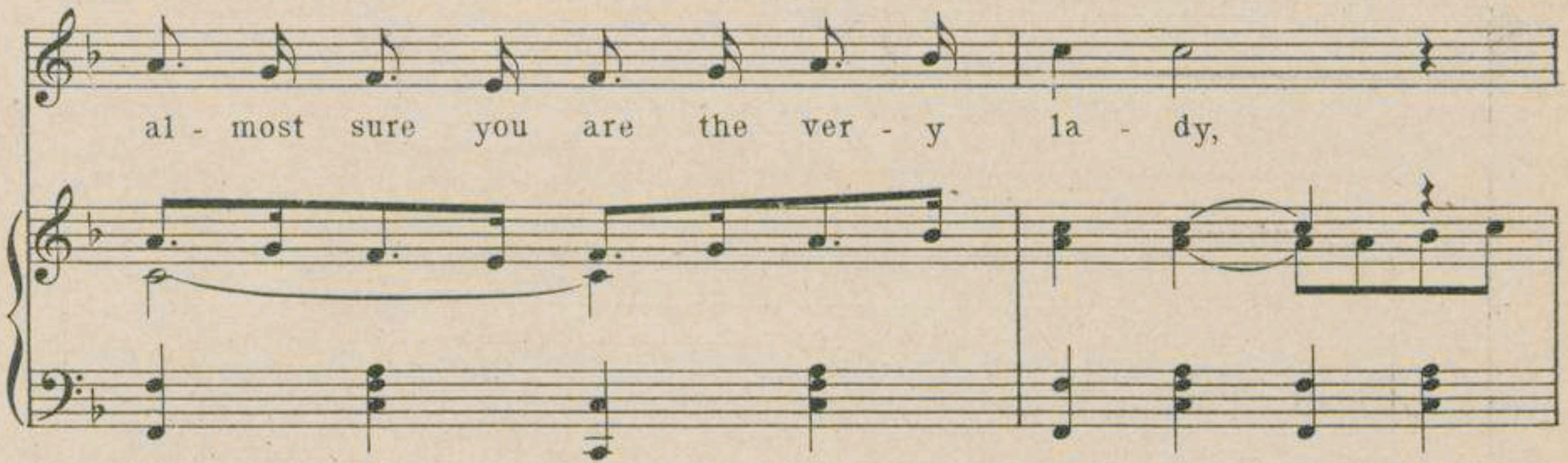
p-f

me? Were - n't you in - dulg - ing in black -

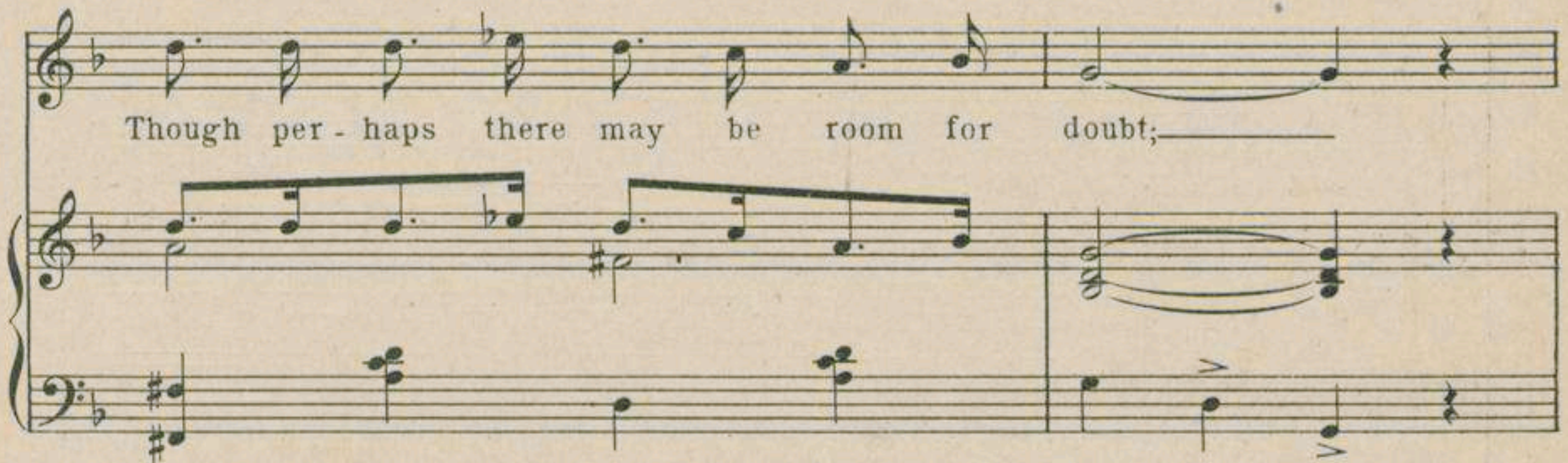
ber - ries? Were - n't you a sip - ping at some tea? I'm

Aren't you & c.4

al - most sure you are the ver - y la - dy,



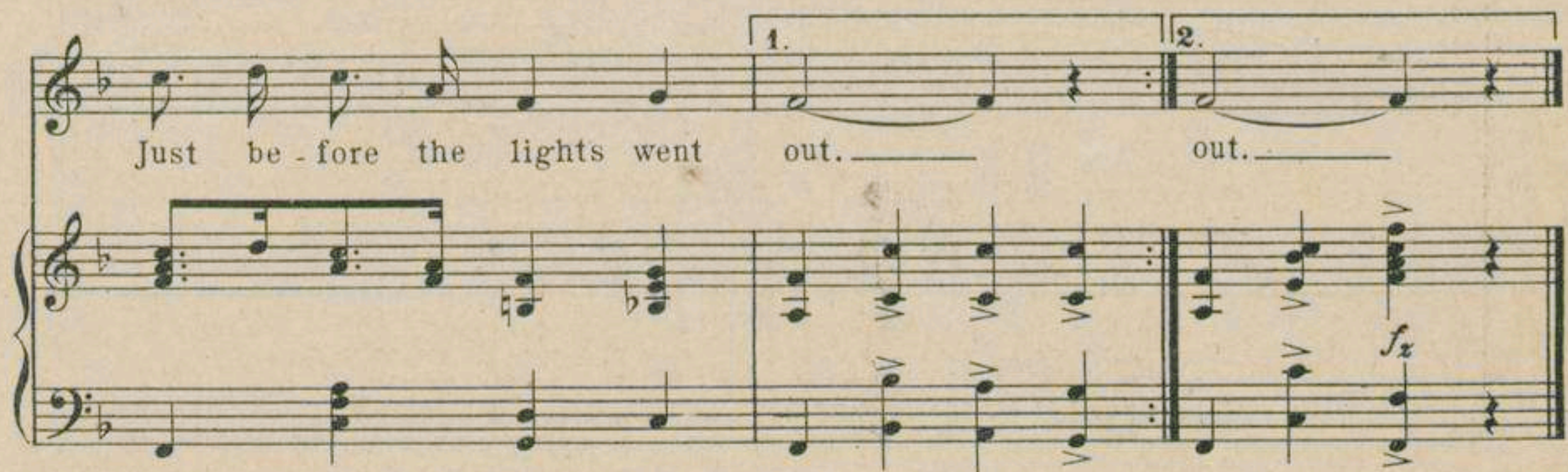
Though per - haps there may be room for doubt;



Are - n't you the girl I met at Sher - ry's?



Just be - fore the lights went out. 1. out. 2. out.



A most beautiful song, which, with its realistic text and sweet, plaintive music, appeals to all. The range is also suited to any voice.

Not so long ago.

Words and Music by
ROSE MONROE.

CHORUS.

Not so long a - go, you seemed to miss me, Not so
long a - go you loved me so, Not so
long a - go, you yearned to kiss me, And you were
mine, Ah! not so long a - go! Not so

mf

rit. *a tempo*

tr. *rit.* *a tempo*

Detailed description: The musical score is written in G major (one sharp) and common time. It consists of a vocal line and a piano accompaniment. The piano part features a steady eighth-note accompaniment in the right hand and a more active bass line in the left hand. The vocal line is marked with dynamics like *mf* and includes performance directions such as *rit.* (ritardando) and *a tempo*. The lyrics are: "Not so long a - go, you seemed to miss me, Not so long a - go you loved me so, Not so long a - go, you yearned to kiss me, And you were mine, Ah! not so long a - go! Not so".

Copyright MCMVII by LEO FEIST, 134 W. 37th St., N.Y.
International Copyright and Performing Rights Secured and Reserved.
Price 50¢ less the usual discount.

Get a copy of
"How'd You Like To Like A Girl Like Me?"
The new hit by the author of "Can't You See I'm Lonely?"

A realistic song of simple, sweet pathos.

JUST PLAIN FOLKS.

Words and Music by
MAURICE STONEHILL.

CHORUS.

"We are just plain folks your mother and me Just plain folks like our

own folks used to be As our pres-ence seems to grieve you, We will

go a-way and leave you For we're sad-ly out of place here, 'cause we're just plain folks."

Copyright, MCMII, by Howley, Haviland & Dresser.

English Copyright secured.

Copyright assigned MCMVI to Leo Feist, 184 W. 37th St. N. Y.

PRICE 50c. Less the usual discount.

"Could You Learn to Love a Little Girl Like Me"
The latest New York Hit. The Eternal Question.

A genuinely bewitching work; in fact, the greatest composition of its kind that the genius of a truly talented woman could conceive.

MABEL Mc KINLEY'S.
Golden Rod.
 Intermezzo.

Moderato assai.

By MABEL Mc KINLEY.

Composer of "Suzanna" "Karamo" "Feather Queen" etc.

*Proteccion para la Republica Mexicana de Leo. Peist, New York. Depositada conforme a la ley.

Copyright MCMVII by LEO PEIST, 134 W. 27th St. N. Y. International Copyright Secured and Reserved.

PRICE 50c. Less the usual discount. Also published as a song.

"APPLE BLOSSOMS," REVERIE
 (A Tone-Poem)

A Fascinating and Distinctive Number. Dainty Themes of Beauty and Originality.

A most beautiful song, which, with its realistic text and sweet, plaintive music, appeals to all. The range is also suited to any voice:

Not so long ago.

Words & Music by
ROSE MONROE

CHORUS.

Not so long a - go, you seemed to miss me, Not so
long a - go you loved me so, Not so
long a - go, you yearned to kiss me, And you were
mine, Ah! not so long ago, Not so
long ago.

Copyright MCMVII by LEO FEIST, 184 W 37th St., N.Y.
International Copyright and Performing Rights Secured and Reserved.

Price, 50c. less the usual discount.

GET A COPY OF
"How'd You Like To Like A Girl Like Me"
 The new hit by the author of "Can't You See I'm Lonely"

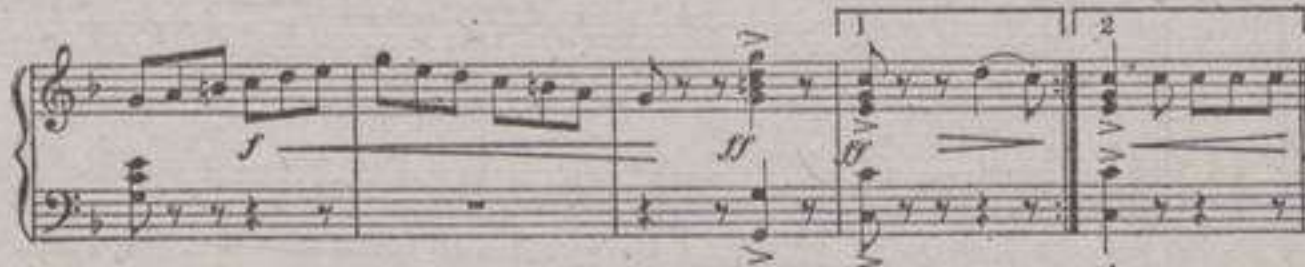
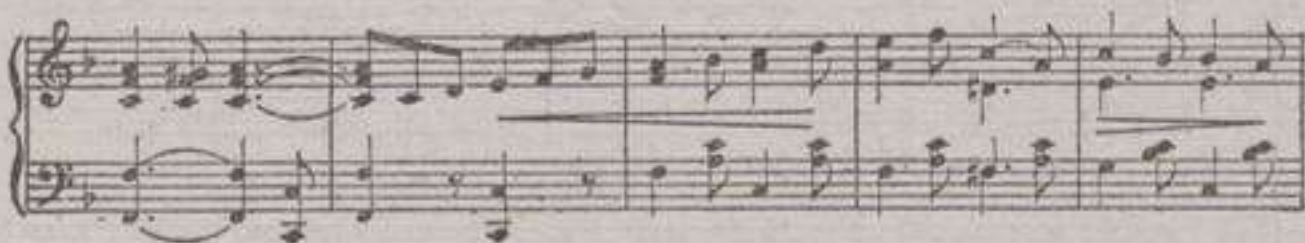
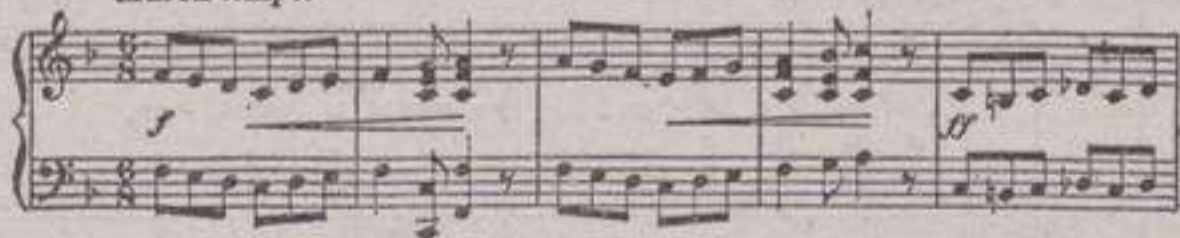
An up-to-date work, co-existent with the famous play:

The Great Divide.

MARCH and TWO STEP.

LOUIS MAURICE.

March tempo.



Copyright MCMVII by LEO FEIST, 134 West 37th St. New York. ¹Propiedad para la Republica Mexicana de Leo Feist, New York. ²Depositada conforme a la ley.

Price, 50c. less the usual discount

"OLD FAITHFUL" March and Two-Step
Holzmann's latest Triumph. Be sure to get a copy: