



ALONE AT LAST

WITH UKULELE ARRANGEMENT



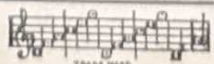
Words by
GUS KAHN
Music by
TED FIORITO



R.S.

MADE IN USA

Irving Berlin, Inc.
MUSIC PUBLISHERS
1607 Broadway New York



Alone At Last

Words by
GUS KAHN

Tune Ukulele

Music by
TED FIORITO

A D F# B
Put Uke Capo on 1st fret

Moderato

Piano introduction in B-flat major, 4/4 time, marked Moderato. The piece begins with a soft (f) dynamic and features a flowing melody in the right hand and a rhythmic accompaniment in the left hand. The introduction concludes with a forte (f) dynamic.

Voice

Four ukulele chord diagrams corresponding to the first vocal line: G major, F major, E major, and D major.

Vocal and piano accompaniment for the first vocal line. The piano part is marked *Vamp* and *mf*. The lyrics are: "I just cant be-lieve it's true / Guess it's true that love is blind".

Four ukulele chord diagrams corresponding to the second vocal line: G major, F major, E major, and D major.

Vocal and piano accompaniment for the second vocal line. The lyrics are: "Here we are a-lone, we two / That's why you were hard to find / I have wait-ed all my / Af-ter all I'm glad I".

Four ukulele chord diagrams corresponding to the third vocal line: G major, F major, E major, and D major.

Vocal and piano accompaniment for the third vocal line. The lyrics are: "life it seems / had to wait / To / I / tell my dreams / know that fate / to you / was kind".

Ukulele Arr. by MAY SINGHI BREEN

Copyright MCMXXV by Irving Berlin, Inc., 1607 Broadway, N.Y.C.
International Copyright Secured

Made in U.S.A.

All Rights Reserved

Chorus

There was I _____ wait-ing all a - lone _____ Won-d'ring why

p-f

I was all a lone _____ Won-d'ring when _____ I would find you,

dear, _____ You were here oh so far, though so

near _____ Then we met _____ and we've nev - er

known _____ What it means _____ be - ing all a -

lone _____ hold me close _____ time is fly - ing

fast _____ here we are all a - lone at

last. _____ last. _____