

All American Girl


Collegiate Fox Trot Song

M. Jetter

by
AL LEWIS
Michigan '22



Featured by
GEORGE OLSEN
and his Music

POPULAR ²⁵ EDITION
LEO. FEIST, INC.  **NEW YORK**
"You can't go wrong with any 'Feist' song"

All-American Girl

Fox-Trot Song

By AL LEWIS

(Tune Ukulele)
G C E A

Lively March Tempo

The piano introduction consists of two staves of music in 2/4 time. The right hand features a rhythmic melody with eighth and sixteenth notes, while the left hand provides a steady accompaniment with quarter notes. The key signature has one flat (Bb).

The piano accompaniment for the first vocal line. It includes a treble clef staff with a vocal line and a grand staff (treble and bass clefs) for piano accompaniment. The piano part features chords and a rhythmic accompaniment. Dynamics include *sfz* and *p*. A guitar chord diagram for F is shown above the piano staff.

Let us sing a-bout,

The piano accompaniment for the second vocal line. It includes a treble clef staff with a vocal line and a grand staff for piano accompaniment. Dynamics include *p*. A guitar chord diagram for C7 is shown above the piano staff.

one with-out a doubt, Sweetest girl in the land, "Foot-ball" is her mid-dle name,

The piano accompaniment for the third vocal line. It includes a treble clef staff with a vocal line and a grand staff for piano accompaniment. Dynamics include *p*. A guitar chord diagram for F is shown above the piano staff.

Nev-er miss-es an-y game, Wears the col - ors of all the schools we love, Gee! but she's in de-

Copyright 1932 by LEO. FEIST, Inc., 56 Cooper Square, New York, U.S.A.

International Copyright Secured and Reserved

CANADA: Gordon V. Thompson, Limited, 193 Yonge St., Toronto

6628-4

ENGLAND: Francis, Day & Hunter Ltd., London. FRANCE: Publications, Francis-Day, Paris

AUSTRALIA: Allan & Co., Prop., Ltd., Melbourne. GERMANY: Francis, Day & Hunter, G.m.b.H., Berlin.

G7 D7 G7 C7

-mand, Has a cor - ner on beaus, Al-most ev - 'ry one knows.

CHORUS F C7 Fdim. F D7 G7

She's got a half - back at Penn - syl - va - nia, She's got a quar - ter - back at
 half - back at Cal - i - for - nia, She loves a quar - ter - back at

p-f

E dim. Dm.

Yale, as well. She cor - res - ponds with an end at Cen - tre,
 No - tre Dame, She threw a tack - le at Al - a - bam - a,

Am. Adim. C G7 C7 F

And a cen - ter at Cor - nell. She wears a pin of
 And a Ford - ham guard's her flame, She goes to "proms" with



1 4 2 4 3 4 4 4 | 2 1 3 4 4 4 | 1 4 2 4 3 4 4 4 | 2 1 3 4 4 4 | 1 4 2 1 3 4 4 4

D7 **G7** **Gm** **Dm**

— a guard at Har - vard, — A Stan-ford tack-le has her in a whirl, —
 — an Ar - my full - back, — A Na - vy cen-ter has her in a whirl, —

B7 **Bb** **Bbm** **F** **D7** **G7** **C7**

— She's got a sweet - heart — at ev-'ry col - lege, — She's just an All A - mer -
 — She's got a sweet - heart — at ev-'ry col - lege, — She's just an All A - mer -

1 4 2 4 3 4 4 4 | 1 4 2 4 3 4 4 4 | 2 1 3 4 4 4 | 2 1 3 4 4 4

F **G7** **C7** **F** **C7** **Fdim** **F** **To Patter** **G7** **C** **Caug**

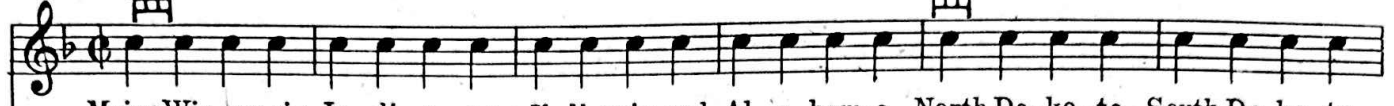
- i - can Girl! She's got a Girl! (To Patter)
 - i - can

Fine **G7** **C7** **G7** **C7** **F** **Bb7** **F**

in - ter col - leg - i - ate, All A - mer - i - can Girl. —

PATTER F

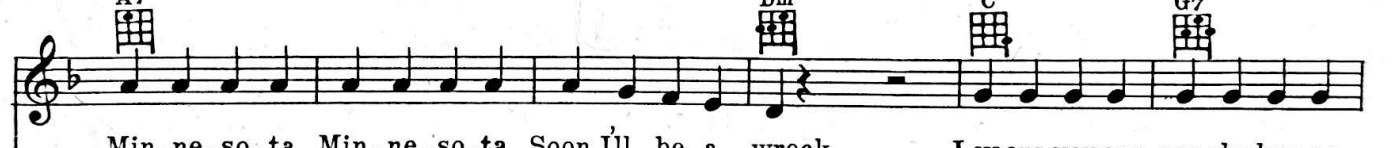
C7



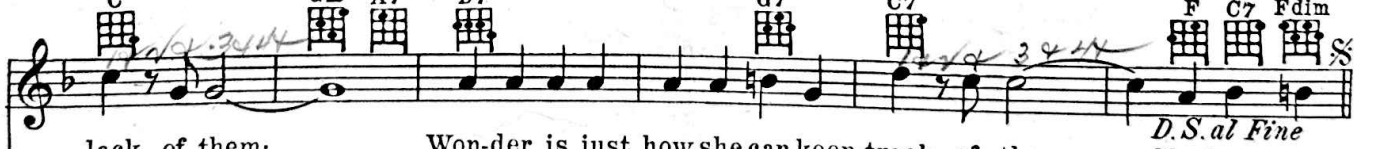
Maine, Wis-con-sin, In-di-a-na, Il-li-nois and Al-a-bam-a, North Da-ko-ta, South Da-ko-ta,



Duke and Georgia Tech. Mich-i-gan and Ten-nes-see and good old Wash-ing-ton and Lee, And



Min-ne-so-ta, Min-ne-so-ta, Soon I'll be a wreck. Lov-ers, you can see she has no



lack of them; — Won-der is just how she can keep track of them; — She knows a



D.S. al Fine

D.S. al Fine

WARNING! ANY COPYING OF THE WORDS OR MUSIC OF THIS SONG, OR ANY PORTION THEREOF, MAKES THE INFRINGER LIABLE TO CRIMINAL PROSECUTION UNDER THE U.S. COPYRIGHT LAW...