

AIN'T YOU

ASHAMED

WORDS BY
SIDNEY D. MITCHEL
& LEW BROWN
MUSIC BY
SEYMOUR SIMONS



MADE IN
U.S.A.

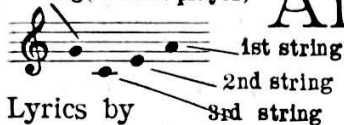
BROADWAY MUSIC CORPORATION
WILL VON-TILZER, PRESIDENT
723-7th AVE., NEW YORK

UKELELE
ARRANGEMENT

Frederick S. Manning

2 When playing this arrangement
with piano tune "Uke" as follows

4th string (nearest player)



Ain't You Ashamed!



Lyrics by
SIDNEY D. MITCHELL
and LEW BROWN

Music by
SEYMOUR SIMONS

Moderato

Piano introduction in 2/4 time, marked Moderato. The score features a treble and bass clef. The treble clef part starts with a forte (f) dynamic and includes a triplet of eighth notes. The bass clef part starts with a mezzo-forte (mp) dynamic. The piece concludes with a sfz (sforzando) dynamic and an accent (^) over the final chord.

Ukulele arrangement by May Singhi Breen

VOICE

Lit-tle Wil-lie Jones was a Peck's bad boy, Al-ways
Wil-lie said that he would-nt peep a-gain, So she

Vamp

Piano accompaniment for the first vocal line, marked Vamp and mezzo-forte (mp). The score features a treble and bass clef. The treble clef part includes a vamp section with a series of chords and a melodic line. The bass clef part provides a steady accompaniment.

up to some new prank
prom-ised him a dime

Ev-'ry time a beau came to
Af-ter that he said he would

Piano accompaniment for the second vocal line, marked mezzo-forte (mp). The score features a treble and bass clef. The treble clef part includes a vamp section with a series of chords and a melodic line. The bass clef part provides a steady accompaniment.

Copyright MCMXXIII by Broadway Music Coporation 723 - 7th Ave. New York

All Rights Reserved British Copyright Secured Will Von Tilzer, Pres. International Copyright Secured

The Publisher reserves the right to the use of this Copyrighted work upon the parts of Instruments serving to reproduce it Mechanically

see his sis - ter Flo, He ran and got his sav - ing's bank _____ But
 hur - ry off to bed, When some - one came to call next time _____ But

last night he did - n't get a dime, The par - lor door was locked in -
 last night when sis - ter's fel - low came, She did - n't keep her word at

stead _____ And so next day when she passed his way, She hung her head as Wil - lie said.
 all _____ She blushed with shame when the next day came And Wil - lie hol - lered thru the hall.

CHORUS

Last night you kissed him _____ aint you a - shamed _____ You can't re-
 You let him pet you _____ aint you a - shamed _____ Firsttime he

mf-f

sist him _____ aint you a - shamed _____ I watched you
 met you _____ aint you a - shamed _____ You tried to

from the hall, _____ the key hole was so small, _____ But you were
 act so nice, _____ you sat there cool as ice, _____ But that boy

fool-ing a - round, _____ fooling a - round, _____ And that aint all, I saw him
 was - nt a dunce, _____ he kissed you once, _____ You kissed him twice, You hugged and

hold you aint you a - shamed, Ma, ought to
squeezed him aint you a - shamed, Oh! how you

scold you cause she'll be blamed He tried to take you on his
teased him you should be blamed He asked for some-thing, you said

knee, And the way it looked to me, You did - n't stop him aint you a -
"yes" What he asked for I can guess, Pa missed his moon - shine aint you a -

1. shamed. Last night you shamed,
shamed. You let him