

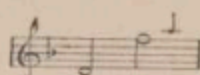
No. 1 in D \flat



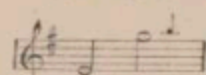
No. 2 in E \flat



No. 3 in F



No. 4 in G



4

LAND OF THE LONG AGO

SONG

WORDS BY

Charles Knight

MUSIC BY

LILIAN RAY

PRICE 2/- NET.

CHAPPELL & CO. LTD.

SYDNEY:
MACDONELL HOUSE,
321 PITT STREET.

MELBOURNE:
THE AUDITORIUM
167-171 COLLINS STREET

LONDON:
80 NEW BOND STREET W.

NEW YORK:
41 EAST 34TH STREET

TORONTO:
38 ADELAIDE ST. W.

Copyright, MCMXV., by Chappell & Co. Ltd.

6638

PRINTED BAND PARTS OF THIS SONG MAY BE OBTAINED IN ALL KEYS

Printed in Australia.

Chappell & Co. Ltd.

LAND OF THE LONG AGO.

Song.

Words by
CHARLES KNIGHT.

Music by
LILIAN RAY.

Andante con espressione.

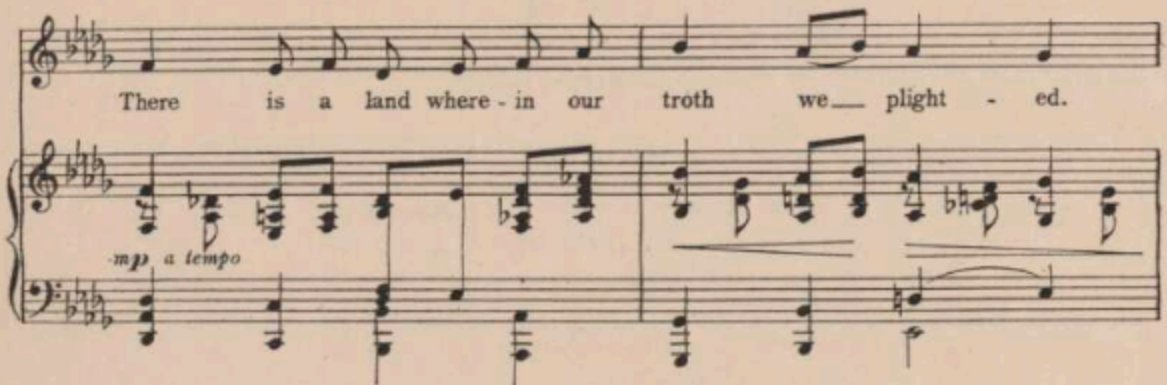
VOICE.

PIANO.

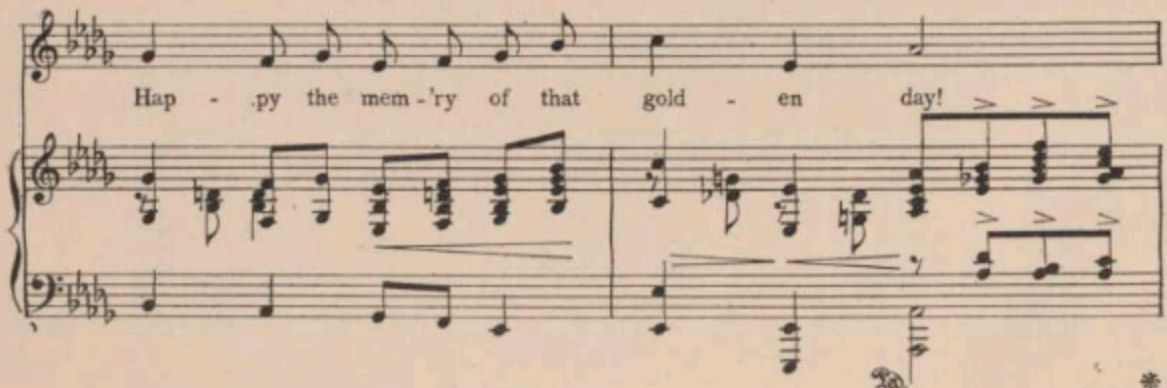


There is a land where - in our troth we - plight - ed.

mp a tempo



Hap - py the mem - 'ry of that gold - en day!



Copyright MCMXV, by Chappell & Co., Ltd.

Heart beat with heart; and souls were u - ni - ted,

Dear one, un - til you went a - way!

rall.

cresc.

rall.

REERAIN.
a tempo

Come, come! for hap - pi - ness is wait - ing

f a tempo

There, in the twi - light glow: And

Love's sweet re - frain we shall hear once a - gain, In that dear

colla voce

Land of the Long A - go!

rall. *p* *pp* *a tempo*

There is a gar-den where our love we plant - ed.

rall. *mp a tempo*

Fair grew the blos-som in those days of yore! And, in my heart, that

rall.

em - blem en - chant - ed, Dear one, will bloom for ev - er - more!

p *cresc* *rall.*

REFRAIN.
a tempo

Come, come! for hap - pi - ness is wait - ing There, in the twi - light

f *a tempo*

glow: And Love's grand re - frain we shall hear once a - gain, In that dear

colla voce

Land of the Long - go!

rall. *ff* *a tempo* *rall.* *pp*