

Respectfully dedicated  
to Rev. Geo. H. HOUGHTON.

THE LITTLE CHURCH  
AROUND  
THE CORNER



**WORDS**

BY

**GEO. COOPER.**

5

**MUSIC**

BY

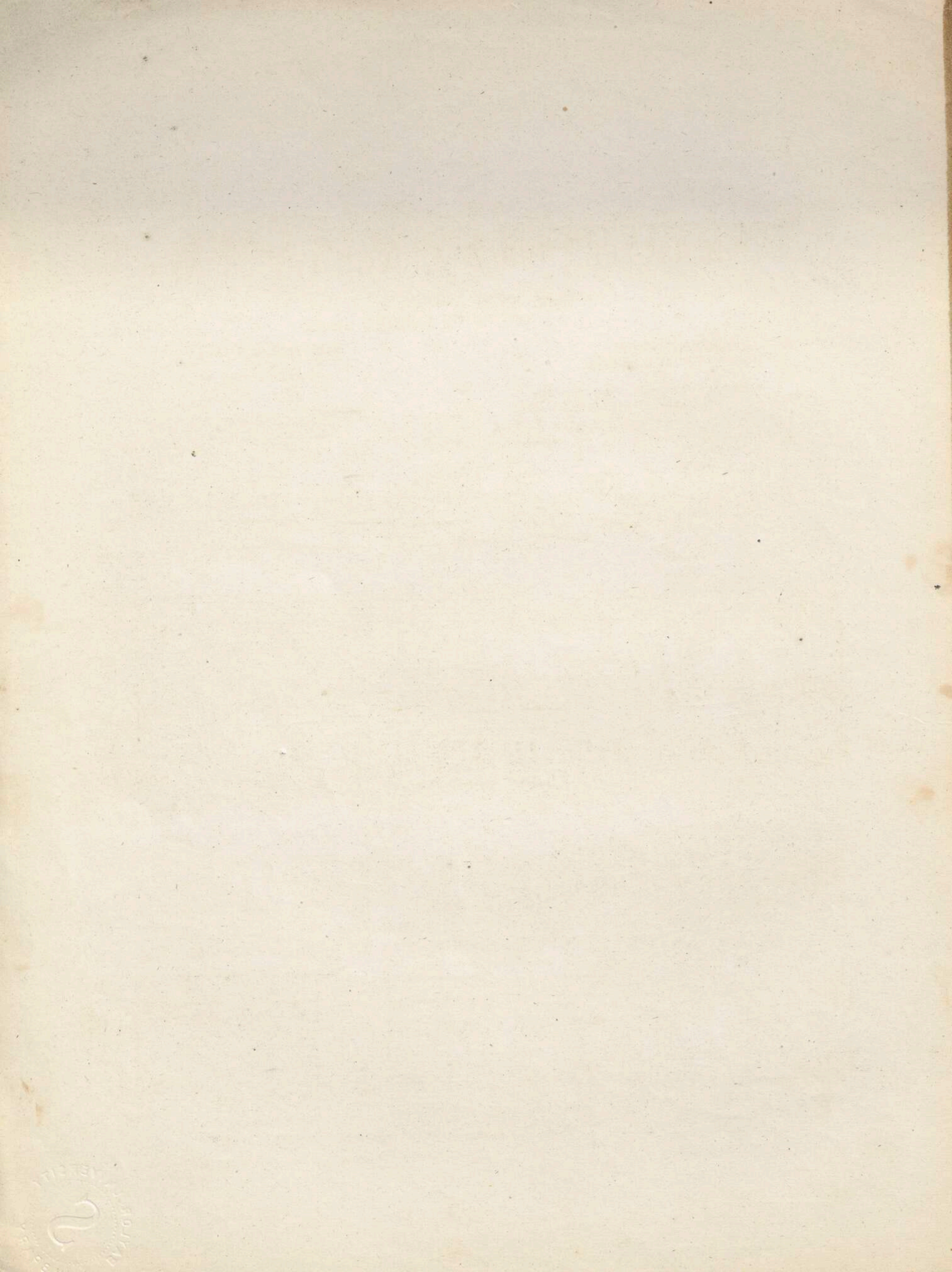
**D. S. WAMBOLD.**

New York, J. L. PETERS. Brooklyn, J. L. PETERS. J. L. PETERS & CO. St. Louis.  
599 Broadway. 301 Fulton Street. 212 North 5<sup>th</sup> Street.

Cincinnati, Boston, Galveston, New Orleans,  
J. J. Dobmeyer & Co. White, Smith & Perry. T. Coggan. L. Grunewald

*Entered according to act of Congress in the year 1871 by J. L. Peters in the Office of the Librarian of Congress.*







# THE LITTLE CHURCH AROUND THE CORNER.

(SONG WITH CHORUS.)

Words by GEORGE COOPER.

Music by D. S. WAMBOLD.

*Moderato con espressione.*

The first system of the piano introduction consists of two staves. The upper staff is in treble clef and the lower staff is in bass clef. The key signature has three flats (B-flat, E-flat, A-flat) and the time signature is common time (C). The music begins with a mezzo-forte (*mf*) dynamic. The melody in the upper staff features eighth and sixteenth notes, while the bass staff provides a harmonic accompaniment with chords and moving lines.

The second system of the piano introduction continues the two-staff format. It begins with a forte (*f*) dynamic. The upper staff continues the melodic line, and the lower staff features a more active accompaniment with chords and moving lines, including some sixteenth-note patterns.

The first system of the vocal line is a single staff in treble clef. It begins with a forte (*f*) dynamic. The melody consists of eighth and sixteenth notes, with a final note that has a fermata.

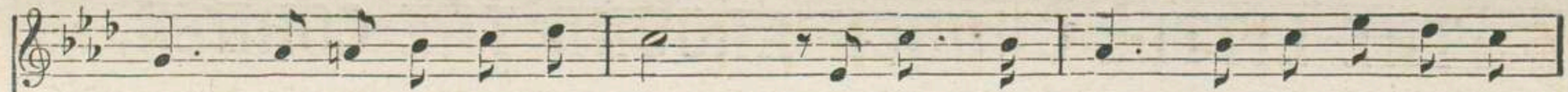
1. God bless the lit - tle church a - round the cor - ner, The shrine of  
2. God bless the lit - tle church a - round the cor - ner, No mat - ter  
3. God bless the lit - tle church a - round the cor - ner, And keep its

The second system of the piano accompaniment consists of two staves. The upper staff is in treble clef and the lower staff is in bass clef. The key signature has three flats and the time signature is common time. The music begins with a mezzo-forte (*mf*) dynamic. The upper staff features a melodic line with eighth and sixteenth notes, and the lower staff provides a harmonic accompaniment with chords and moving lines.

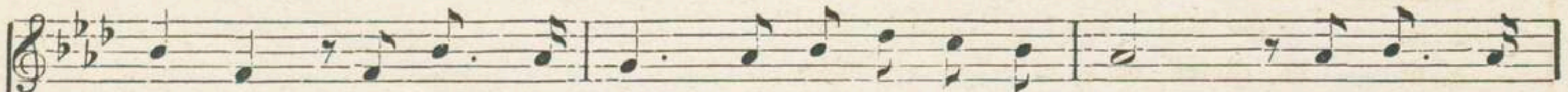
\* 845-4.

Entered according to Act of Congress A. D. 1871, by J. L. PETERS, in the Office of the Librarian of Congress at Washington.

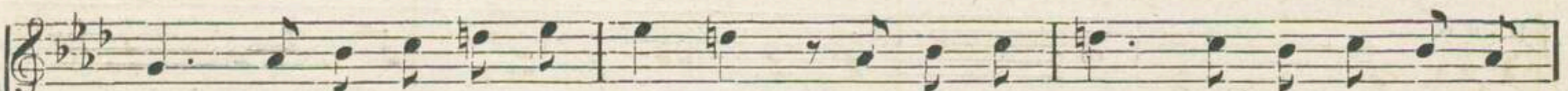
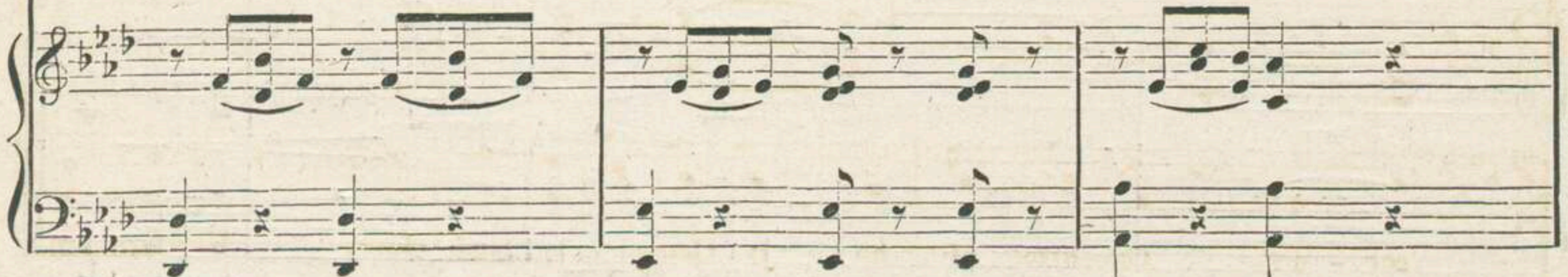




1. ho - ly Char - i - ty and love;      It's doors are ev - er o - pen un - to  
 2. what the Creed that it may bear!      How - ev - er we may dif - fer in o -  
 3. hal - low'd mem - ry ev - er green!      O, like a li - ly grow - ing by the



1. sor - row,      A bless - ing fall up - on it from a - bove;      The rich and  
 2. - pin - ion,      The warmth of Chris - tian sym - pa - thy is there!      A word of  
 3. way - side      It smiles up - on life's ev - er bus - y scene!      It points the



1. poor are e - qual 'neath its por - tals,      And be our path in life what - e'er it  
 2. hope and kind - li - ness a - waits us,      When clouds of sor - row hov - er o - ver  
 3. way to realms of joy un - fad - ing,      And bears of love a nev - er - end - ing





1. may, No heart that need - ed com - fort in af - flic - tion Was ev - er  
 2. head, With need - ed words of pi - ty for the Liv - ing, And rev'rence  
 3. store; God bless the lit - tle church a - round the cor - ner! God bless the

1. turned un - com - fort - ed a - way..... God bless the lit - tle church around the  
 2. for the cold and si - lent Dead.  
 3. lit - tle church for - ev - er - more.....

*ritard.* *mf*

cor - ner, The shrine of ho - ly Char - i - ty and love; Its doors are

*dolce.*

ev - er o - pen un - to sor - row, A bless - ing fall up - on it from a - bove!

*mf* *ritard.*



CHORUS.

*f* SOPRANO *p* *mf*

ALTO

*f* TENOR *p* *mf*

*f* BASE *p* *mf*

God bless the church! God bless the church! The lit - tle church a - round the cor - ner; Its doors are

ev - er o - pen un - to sor - row, A bless - ing fall up - on it from a - bove!.....

ev - er o - pen un - to sor - row, A bless - ing fall up - on it from a - bove!.....







