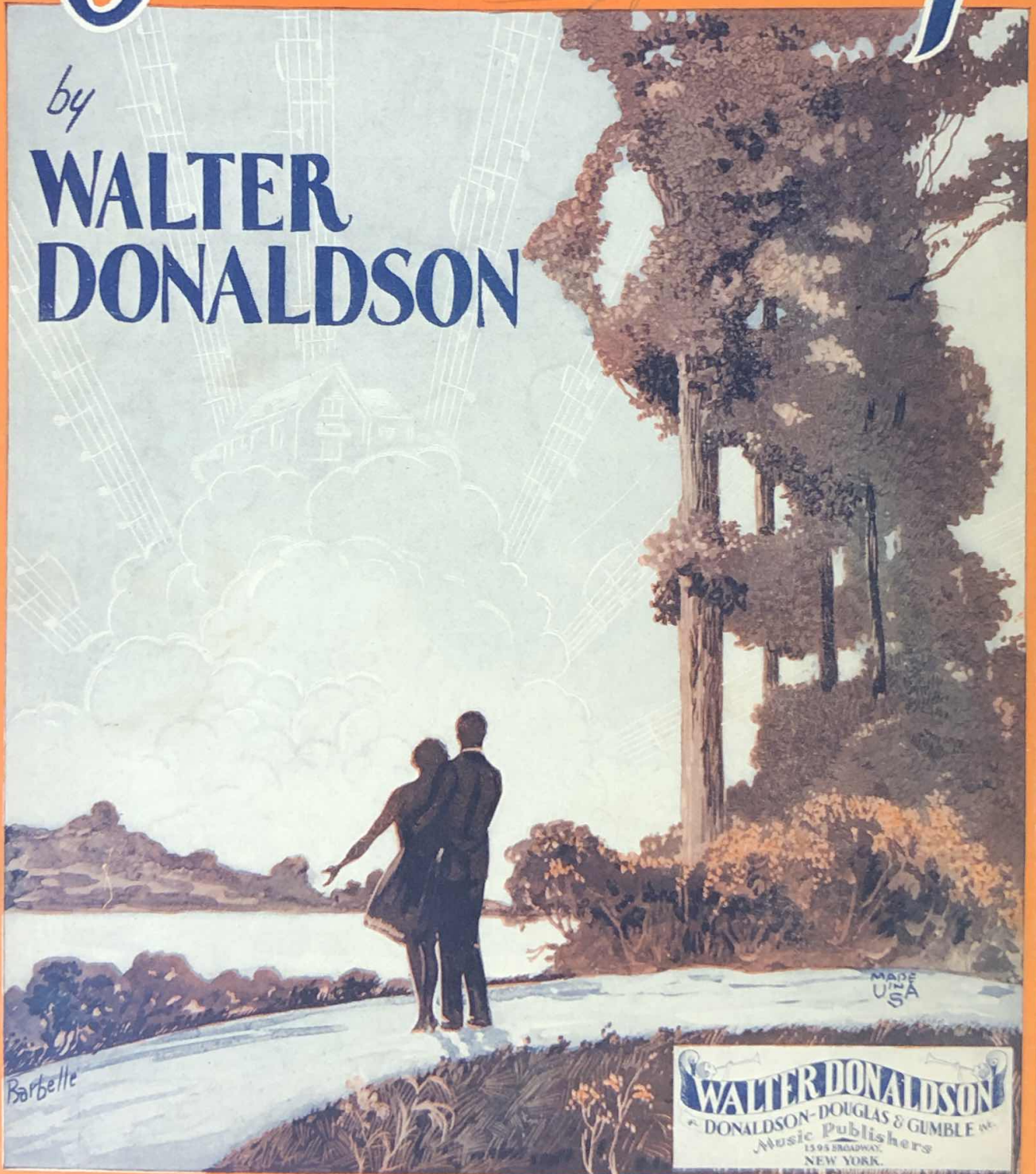


Just Like a Melody Out of the Sky

Marie Luersidge

by

**WALTER
DONALDSON**



Barbette

MADE
USA

WALTER DONALDSON
DONALDSON-DOUGLAS & GUMBLE INC.
Music Publishers
1595 BROADWAY
NEW YORK

Just Like A Melody Out Of The Sky

3

Tune-a-Uke
G C E A

By
WALTER DONALDSON

Moderato

The piano introduction consists of two systems of music. The first system has a treble clef staff with a whole rest and a bass clef staff with a whole note chord. The second system has a treble clef staff with a melody of eighth notes and a bass clef staff with a bass line of eighth notes. The key signature has one flat (B-flat) and the time signature is 4/4.

VOICE

The vocal line is written on a treble clef staff with guitar chord diagrams above it. The lyrics are: "I feel in my glo - ry, When ev - 'ning ap - pears, But it's In the land of clo - ver, I find peace and rest, When my". The piano accompaniment is on a grand staff (treble and bass clefs) with a bass line of quarter notes and chords in the right hand.

The vocal line continues with the lyrics: "just the same old sto - ry, That's been go - ing on for years. bus - y day is ov - er, And the sun has gone to rest." The piano accompaniment continues with a similar bass line and chords in the right hand.

Copyright 1928 by DONALDSON, DOUGLAS & GUMBLE, INC., N.Y. City.
International Copyright Secured Made in U.S.A. All Rights Reserved
J. ALBERT & SON - 137 King Street, Sydney, Australia
KEITH PROWSE & CO. LTD. 42 - 43 Poland Street - London, Eng.

CHORUS

When night is fall-ing, and love is call-ing, the ev-'ning breez-es

p-f

sigh, Just like a mel-o - dy, from out of the sky.

My lit-tle love nest, Is just a dream nest, A bab-ling brook rolls

by, Just like a mel-o - dy, from out of the sky. It's just like

Par-a-dise _____ To somebod-y and me, _____ If it were half as nice _____

_____ How hap-py we'd be, _____ Gee! _____ It's just like Hea-ven,

it sounds like Heaven, To hear a ba-by cry, _____ Just like a mel-o-dy

rit.

from out of the sky! _____ sky! _____

1 2