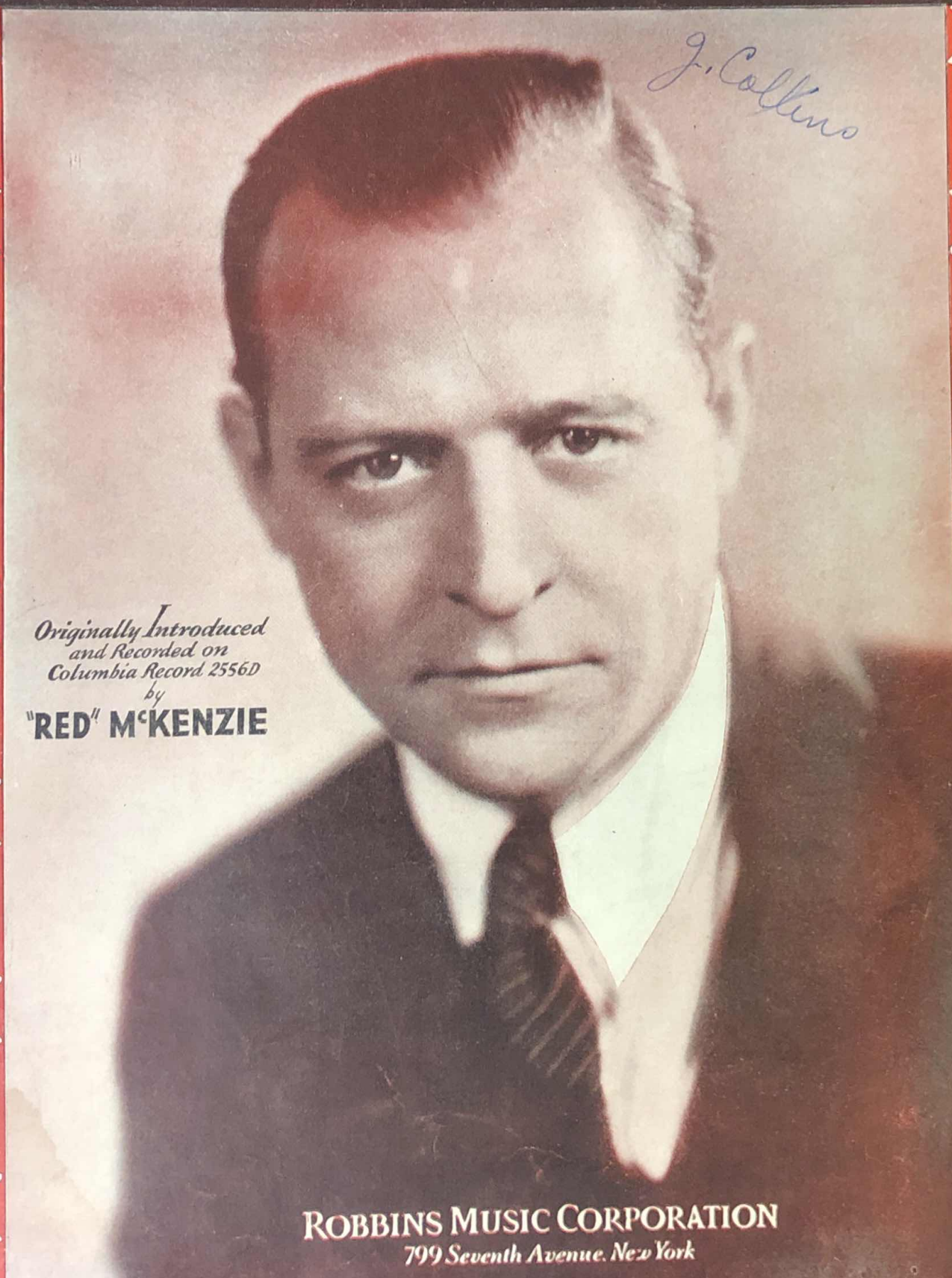


JUST FRIENDS

Lyric by SAM M. LEWIS

Music by JOHN KLENNER



J. Collins

*Originally Introduced
and Recorded on
Columbia Record 2556D
by*
"RED" MCKENZIE

ROBBINS MUSIC CORPORATION
799 Seventh Avenue, New York

MADE IN U.S.A.

Just Friends



Lyric by
SAM M. LEWIS

Music by
JOHN KLENNER

Moderato (with feeling)

mf f dim.

G Dim D7

We two were sweet-hearts But we said good-bye —
Where are the sun - beams That were in your eyes —

rall. mp

B Dim D7 G G7

One with a hand-shake and one with a sigh —
Some-times I won-der If they too were lies —

Ukulele Arr. by MAY SINGHI BREEN "The Ukulele Lady"

Letters over diagrams are names of the chords in original key and are adaptable to Banjo or Guitar.

Tune Ukulele
or Banjulele Banjo
A D F# B

Code - Friends
SH 845-3

Copyright 1931 by Metro - Goldwyn-Mayer Corp. New York, N. Y.

Exclusive Distributors Robbins Music Corporation, 799 Seventh Ave., New York, N. Y. For United States & Canada

E7 A7

We two were sweet-hearts by a sa - cred vow — What
 We who were lov - ers Are now on - ly friends — That's

poco rall. D7 B Dim D7

are we now? — What are we now? —
 how it ends — That's how it ends. —

poco rall.

Chorus G7 C Cmi G

Just Friends lov-ers no more — Just Friends —

a tempo *p*

Eb7 Ami D7

— but not like be - fore — To think of what we've been and

Bmi G Bmi G Emi A7 D# Dim A7 C D7 G7

not to kiss a-gain seems like pre-tend-ing — It is-nt the end - ing — Two

C Cmi G

friends — drift-ing a - part — Two friends — but one broken

Eb7 Ami D7 B7 Emi

heart — We loved, we laughed, we cried and sud-den-ly lovedied The sto-ry

A7 D7 1. G A7 F#dim G7 2. G A7 D7 G

ends And we're Just Friends. Just Friends. —

rall.