

I GOT RHYTHM

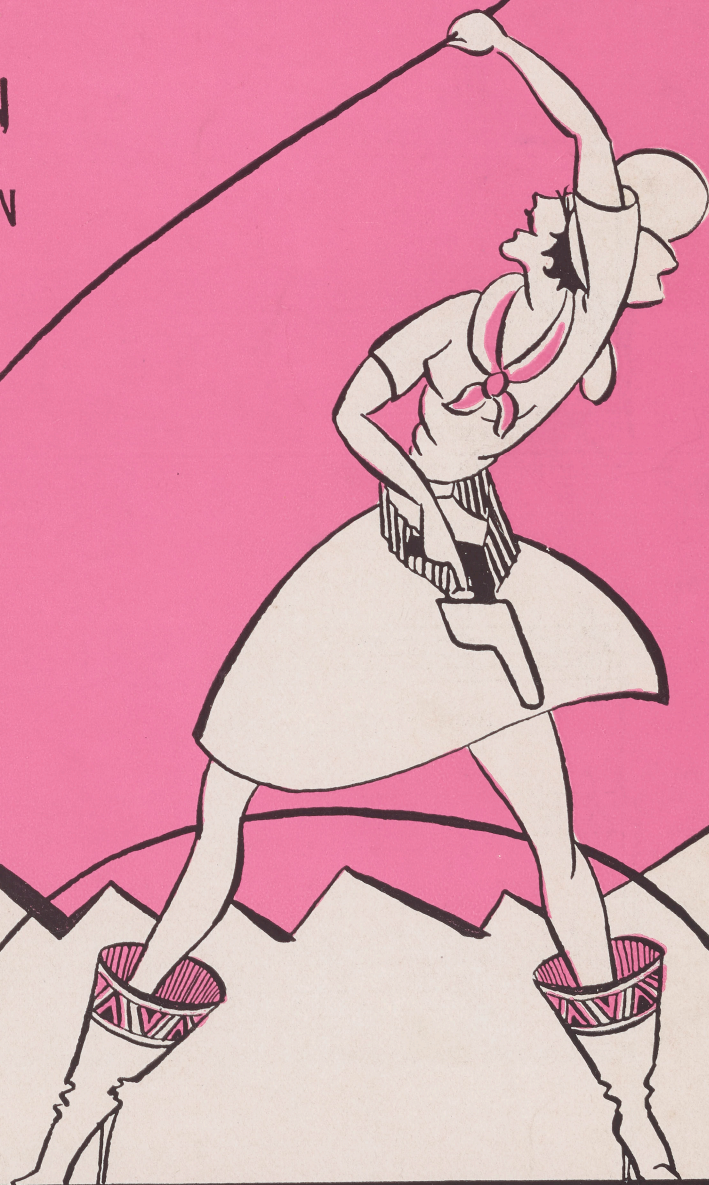
ALEX. A. AARONS & VINTON FREEDLEY  
PRESENT  
THE NEW MUSICAL COMEDY

# GIRL CRAZY

MUSIC BY  
**GEORGE GERSHWIN**  
BOOK BY  
GUY BOLTON & JOHN MCGOWAN  
LYRICS BY  
**IRA GERSHWIN**

STAGED BY  
ALEXANDER LEFTWICH  
DANCES & ENSEMBLES BY  
GEORGE HALE

Boy What Love  
Has Done To Me  
But Not For Me  
I Got Rhythm  
Embraceable You  
Sam and Delilah  
Could You Use Me?  
Bidin' My Time  
Selection



MADE IN U. S. A.

NEW WORLD MUSIC  
CORPORATION  
HARMS  
NEW YORK

(orj)

This was a tough one to get

194-066

2 "Girl Crazy"

a lyric for. Spent three weeks on it.

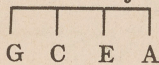
# I GOT RHYTHM

(Kate - Tess - Flora)

Words by  
IRA GERSHWIN

Tune Ukulele or Banjulele Banjo

Music by  
GEORGE GERSHWIN



*Ira Gershwin*

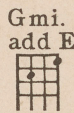
Lively

VOICE

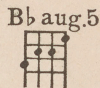
PIANO



Days can be



sun - ny, With nev - er a sigh; Don't need what



mon - ey can buy. Birds in the

\*Letters over Uke diagrams are names of chords adaptable to Banjo or Guitar in original key

Ukulele arr. by S.M. Zoltai

Copyright MCMXXX by New World Music Corp., N.Y.

Harms Inc., Sole Selling Agent

Copyrighted in South America for New World Music Corp., by Harry Kosarin, Rio de Janeiro  
Propiedad Asegurada Para New World Music Corp., en Republica Argentina Por Harry Kosarin, Buenos Aires  
Propiedad Asegurada Para New World Music Corp., en Republica Uruguay Por Harry Kosarin, Montevideo  
International Copyright Secured Made in U. S. A.

S - 354 - 4

ALL RIGHTS RESERVED INCLUDING PUBLIC PERFORMANCE FOR PROFIT

Cmi. Gmi. add E Eb7 Gmi. Gmi.7

tree sing Their day - ful of song, Why should - n't

Cmi.7 F7 Bb Fmi. Bb Fmi. Bb D D7

we sing a - long? I'm chip - per

Faug. 5 D7 Cmi.7 Eb7 D D7

all the day, Hap - py with my lot. How do I

Faug. 5 D7 Cmi.7 F7 Edim. Gb7 F7 Bbmi. add G Ddim. F7

get that way? Look at what I've got:

4 REFRAIN (with abandon)

*p-mf*

B $\flat$  Gmi. Cmi.7 F7 Gmi.7 with C Edim. Cmi.7 F7

I — got rhy - thm, I — got mu - sic, —

B $\flat$  Gmi. Cmi.7 F7 Ebmi. add C B $\flat$  F7 B $\flat$  C $\sharp$ dim. F7

I — got my man Who could ask for an - y - thing more?

B $\flat$  Gmi. Cmi.7 F7 Gmi.7 with C Edim. Cmi.7 F7 B $\flat$  Gmi

I — got dais - ies — In — green pas - tures, — I — got

Cmi.7 F7 Ebmi. add C B $\flat$  F7 B $\flat$  D7 C

my man Who could ask for an - y - thing more? Old — Man

Ddim. D7 G Daug.5 Dmi. G7 C7 Bb Cdim. C9

Trou - ble, - I - don't mind him, - You won't find him -

C7 with Gb F7 C7 F7 Bb Gmi. Cmi7 F7 Gmi.7 with C Edim.

'Round my door. I - got star - light, I - got

Cmi.7 F7 Bb Gmi. Cmi.7 F7 Ebmi. add C Bb Fmi.

sweet dreams, I - got my man - Who could ask for an - y-thing

G7 C7 F7 1. Bb \*Ab Gb Db 2. Bb

more, Who could ask for an - y-thing more? more?

8  
Bar 3rd fret with 1st finger and use 2nd and 3rd finger on remaining dots

# FOUR INTERESTING SONGS from **STRIKE UP THE BAND**

## Strike Up The Band!

(Timothy and Chorus)

Words by  
IRA GERSHWIN

GEORGE GERSHWIN

Refrain *very marked*

Let the drums roll out! ——— (Boom boom boom!) ——— Let the trum-pet call! ——— (Ta-ta - ra - ta-ta-ta-ta!) ——— While the

*(spoken)* *(Imitation of Trpt.)*

## SOON

Duet

Words by  
IRA GERSHWIN

Music by  
GEORGE GERSHWIN

Refrain *p-mf* Not fast *with tender expression*

Tim: Soon \_\_\_\_\_ the lone - ly nights will be

## I Mean To Say

Duet

Words by  
IRA GERSHWIN

Music by  
GEORGE GERSHWIN

Refrain *Mod. ato*

Tim: I mean to say, I mean to say,

## I've Got A Crush On You

Duet:

Words by  
IRA GERSHWIN

Music by  
GEORGE GERSHWIN

Refrain *Allegretto giocoso (gayly)*

I've got a crush on you, ——— sweet-ie pie, ———

Copyright MCMXXVII by New World Music Corporation, N.Y.

RECORDS AND PIANO ROLLS CAN ALSO BE  
PROCURED FOR THE ABOVE SONGS.

**NEW WORLD MUSIC CORPORATION** 62 WEST 45<sup>TH</sup> ST.  
NEW YORK