

HAVE YOU EVER FELT THAT WAY?

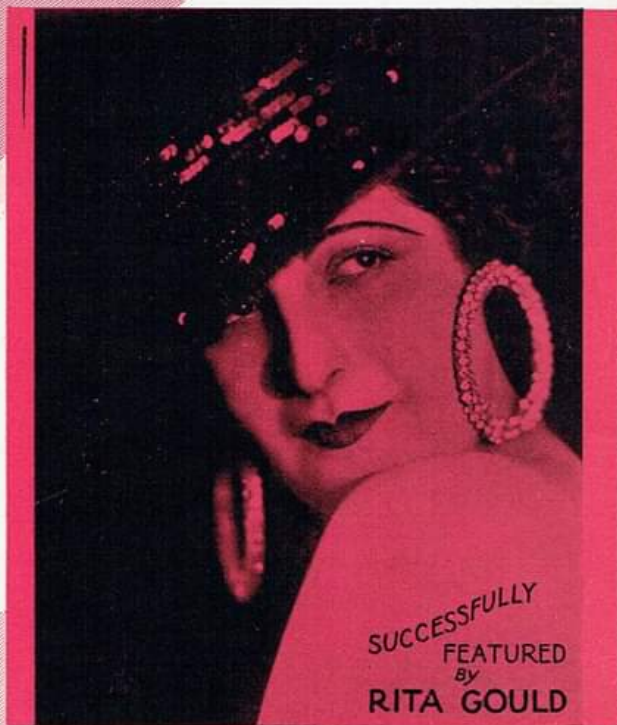
(BLUES BALLAD)



By
AGNES CASTLETON
and
SPENCER WILLIAMS

writer of
"I AIN'T GOT NOBODY"
"ARKANSAS BLUES"



WITH
UKULELE ARRANGEMENT



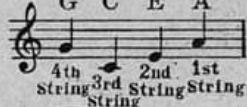
 **CLARENCE WILLIAMS** 
MUSIC PUBLISHING CO., INC.
1547 BROADWAY, NEW YORK

Have You Ever Felt That Way?

(Blues Ballad)

Tune Uke

G C E A



By AGNES CASTLETON
and SPENCER WILLIAMS
Writers of: "Mellow Moonlight"
"You Were Meant For Me"

Uke Arr. by Ben Garrison

Moderato

Piano

The piano introduction consists of two staves. The right hand plays a series of chords and eighth notes, while the left hand provides a steady bass line with eighth notes.

Vamp

Have you ev - er had a feel - in'

The first line of the song features a vocal melody on a treble clef staff and piano accompaniment on a grand staff. The piano part includes a 'Vamp' section with a repeating eighth-note pattern in the right hand and a steady bass line in the left hand.

The worlds a - bout to end? — Have your brains just kept on reel - in'

The second line of the song continues the vocal melody and piano accompaniment. The piano part maintains the 'Vamp' pattern, with some chordal changes in the right hand.

You seemed with-out a friend? — Have you had those mean old blues, too. —

The third line of the song concludes the vocal melody and piano accompaniment. The piano part continues with the 'Vamp' pattern, ending with a final chord.

Copyright 1929 by CLARENCE WILLIAMS Music Pub.Co.Inc.1547 Broadway,N.Y.C.

International Copyright Secured

ALL RIGHTS RESERVED Including public performance for profit

Made in U. S. A.

But did - n't un - der - stand? Ev-'ry one a - round re -

fused to — Lend you a help - in' hand.

Chorus (*not fast*)

You're look-in' a - round with no one in sight. Wond-rin' where your ba - by
You're watch-in' the clock and pac-in' the floor. Wait - in' for the knock at

p-f

is to - night - Have You Ev - er Felt That Way?
your front door - Have You Ev - er Felt That Way?

You're feel - in' for - lorn— you've got the Boo-Hoos—
 You can't sleep a - wink— you can't eat a bite—

Night and day you sing the wear-y blues— Have You Ev-er Felt That
 Ev-'ry -thing is wrong and noth-in's right— Have You Ev-er Felt That

Way? You are so down heart - ed you
 Way? Life is so dis - pleas - in' you

don't know what to do. You ain't got no -
 wish that you could die, You're so mel - an -

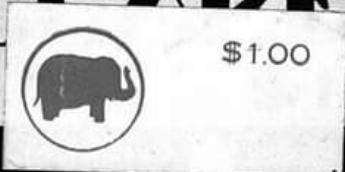
bo - dy to tell your trou - bles to Just
chol - y and all day long you sigh Just

walk - in' for miles - with no place to go - Talk - in' to your - self but
walk - in' in rings - but get - tin' no where - Look - in' like a beg - ger

you don't know - Have You Ev - er Felt That
in dis - pair - Have You Ev - er Felt That

1 Way? You're Way?
Way? You're Way?

CLARENCE WILLIAMS' RAR PIANO SOLOS



★
"Close Fit Blues"
by Clarence Williams

★
"Wild Flower"
by Clarence Williams

★
"Radiolette" by Eugene Platzman

★
"Keyboard Express"
by Mike Jackson

★
"Memoresoue"
by Tim Brymn
WRITER of "SPARKLETS"

"CAROLINA SHOUT" BY JAMES P. JOHNSON
"JINGLES" BY JAMES P. JOHNSON
"SCALIN' THE BLUES" BY JAMES P. JOHNSON
"KEEP OFF THE GRASS" BY JAMES P. JOHNSON

CLARENCE WILLIAMS FOLIOS
CLARENCE WILLIAMS SAXOPHONE FOLIO ---PRICE \$1.00
CLARENCE WILLIAMS NEGRO CLASSIC FOLIO (PIANO) 50¢
CLARENCE WILLIAMS BLACK DIAMOND FOLIO (DANCE) 50¢

 = Syncopated Waltz = 
"ECCENTRICITY" BY JAMES P. JOHNSON

CLARENCE WILLIAMS MUSIC PUB. CO.
1547 BROADWAY NEW YORK CITY