

THE LITTLE WHITE HOUSE (AT THE END OF)
HONEYMOON LANE

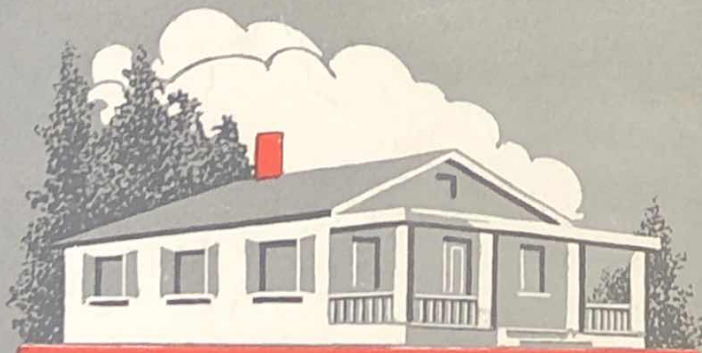


Mr. A. L. ERLANGER PRESENTS
EDDIE DOWLING

IN THE NEW MUSICAL PLAY

HONEYMOON LANE

BOOK, LYRICS & MUSIC BY
EDDIE DOWLING
AND
JAMES F. HANLEY



The Little White House
(At The End Of Honeymoon Lane)
Half A Moon (Is Better Than No Moon)
Jersey Walk
Gee! But I'd Like To Be Bad
Dreams For Sale
Waddya Say—We Steal Away
Mary Dear, I Miss You Most Of All
Marching On To Hollywood
Halloween
Head Over Heels In Love
Chorus Pickin' Time On Broadway

STAGED BY
EDGAR
MACGREGOR

DANCES BY
BOBBY
CONNELLY

ORCHESTRA
UNDER DIRECTION OF
ARTHUR LANGE

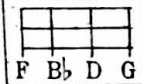
SHAPIRO, BERNSTEIN & Co., Inc.
MUSIC PUBLISHERS NEW YORK
MADE IN U.S.A.

The Little White House

(At The End Of Honeymoon Lane)

Uke in B \flat

With Piano
Tune Thus



By EDDIE DOWLING
and JAMES F. HANLEY

Piano introduction musical notation in B \flat major, 4/4 time. The right hand features a melodic line with grace notes and slurs, while the left hand provides a harmonic accompaniment with chords and single notes.

Slower



Vocal line musical notation for the 'Slower' section, starting with a 4-measure rest followed by the lyrics: "Ev-'ry-one longs for a".

Ev-'ry-one longs for a
When you are thru with the

Vamp

mp

p

Piano accompaniment for the 'Slower' section, featuring a 'Vamp' section with dynamic markings *mp* and *p*. The music includes a 4-measure rest and a repeat sign.

Five ukulele chord diagrams for the final section of the piece, showing various chord progressions.

home of their own What a Heav - en on earth it must be
cares of the day When the sun slow-ly sinks in the West

Piano accompaniment for the final section of the piece, corresponding to the vocal line and chord diagrams.

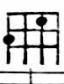
Copyright MCMXXVI by Shapiro, Bernstein & Co. Inc. Cor. Broadway & 47th Street, New York
Propiedad Asegurada Para La Republica Mexicana MCMXXVI Todos Los Derechos Reservados
Derechos De Reproduccion Reservados En Cuba y Sud y Central America

International Copyright Secured

ALL RIGHTS RESERVED
Including Public Performance For Profit

Made in U. S. A.

Ma-ny may sigh for a cas-tle of stone, Still there's on-ly one love nest for me:
Foot-steps grow lighter as they lead the way, To a ha-ven where you will find rest:

REFRAIN  *simplified uke arrangement*

Just a lit-tle white house - With the lit-tle green blinds - At the

end of Hon-ey-moon Lane - Just a lit-tle white gate

- That ear-ly and late - Seems to say, "Won't you please call a -

gain" You leave trou-les out - side - And your joys just be - gin

When the lit - tle front door - Whis - pers "Won't you come in - To the

lit - tle white house - With the lit - tle green blinds - At the end of

Hon - ey - moon Lane." Just a Lane."

OUT
IE
M
NCE
LIO
27
ining
WAYS
COMEDY
DANCE
TS
ed as
ROTS
ZES
IES
STONS
SOLO
Y
postpaid