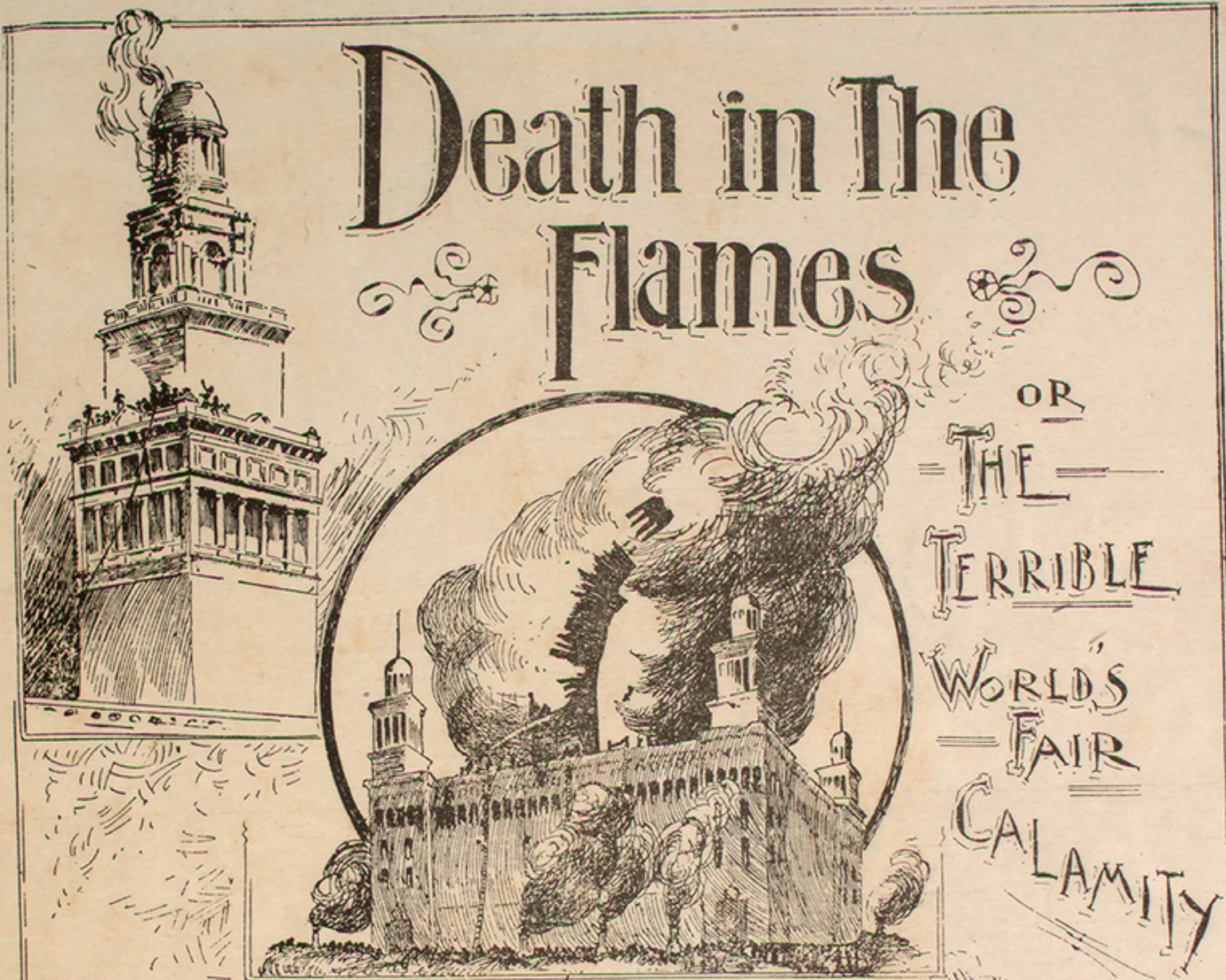


# Death in The Flames

OR  
THE  
TERRIBLE  
WORLD'S  
FAIR  
CALAMITY



WORDS BY  
*Arthur J. Lamb.*

MUSIC Arranged  
BY  
**OTTO MUELLER**

40

Published By  
**NATIONAL  
MUSIC  
COMPANY** CHICAGO  
215 N. 221  
Wabash  
Avenue

Benj. W. Hitchcock  
385 SIXTH AVE  
NEW YORK

3399

Copyright 1893 by National Music Co.

**C. JANKE & CO.**  
PIANOS  
ORGANS and MUSIC,  
307 & 309 Tremont St.  
GALVESTON, TEX.

TEACHERS DISCOUNTS TO ALL  
TEXAS MUSIC SUPPLY HOUSE  
BEAUMONT, TEXAS.



# Death in the Flames.

OR

## A Terrible World's Fair Calamity.

Words by ARTHUR J. LAMB.

Arr. by O. MULLER.

*Allegro moderato.*

pp *cres.* sf *dim.*

The first system of piano accompaniment consists of two staves. The right staff is in treble clef with a key signature of two flats and a 6/8 time signature. The left staff is in bass clef with the same key signature and time signature. The music begins with a piano (*pp*) dynamic and a crescendo (*cres.*). It features a series of eighth notes in the left hand and a melodic line in the right hand. Dynamics change to *sf* (sforzando) and then *dim.* (diminuendo).

The second system of piano accompaniment continues the piece. It features a *sf* (sforzando) dynamic followed by a piano (*p*) dynamic and a *rall.* (rallentando) marking. The right hand has a melodic line with some grace notes, while the left hand continues with a rhythmic accompaniment.

*Andante con moto.*

1. The sum - mer sky shone soft and blue, And  
2. An aux - ious crowd be - holds the scene, And

The third system includes a vocal line and piano accompaniment. The vocal line is in treble clef with a key signature of two flats and a common time signature. It features two verses of lyrics. The piano accompaniment is in bass clef with the same key signature and time signature. Dynamics include *p* (piano).



*rfz*

per - fect was the gold - en noon, And throngs who on - ly pleas - ure knew, In  
watch - es them with ba - ted breath, And smoke that doth the vis - - ion screen, Be -

*rfz*

*cres. e animato.* *f* *p*

build - ing, gar - den or la - goon, Dreamt not..... what was..... to  
speaks the pres - ence there of death, Be - speaks..... the pres - - ence

*cres. e animato.* *f* *cres.* *ff*

hap - pen soon: But hark, a sud - den cry of "fire!" That  
there of death! The tow - er is reached, when sud - den - ly A

*p* *e legato.*



smolders in the storage tower, And quick are fire-men climbing higher To  
cry of horror rends the air, For only flames the men can see, And

bat - tle with the aw - - ful pow - er. In fu - ture time To.....  
fire surrounds them ev - - 'ry - where. In fu - ture time To.....

*cres.* *f e grandioso.* *dim*

shine sublime, With ev - 'ry gal - - lant he - roe's name, In.....

*cres.* *f* *dim.*



ev - - 'ry rec - - ord of their fame.....

*maestoso.* *Sva* *morendo.*

3.

And fiercer yet the flames leap on,  
 And higher still they leap and dash.  
 One moment more— a wall is gone,  
 And downward thuds with awful crash,  
 But where the firemen brave and rash.  
 Some leaping to the depths below,  
 Whilst others vainly call for aid;  
 Yet, still in facing death, to know  
 A courage not by death dismayed,  
 In future time, &c.

4.

And redder, redder, glows the sky,  
 And still destruction lingers there.  
 The shrieks of those who suffering die,  
 Sad rend the tranquil summer air,  
 And hearts go forth in silent prayer;  
 Too late, too late, the crumbling walls  
 Crash with the bodies of the brave,  
 With every shock a fireman falls,  
 And every moment marks a grave.  
 In future time, &c.

5.

But let us draw the curtain here,  
 And saddened bow the humble head,  
 And honor them who knew not fear,  
 But sought to challenge fear instead,  
 And won a monument when dead.  
 A monument that to the age  
 Shall long survive the passing flame,  
 And still to give to history's page  
 The heroism born with fame.  
 In future time, &c.