
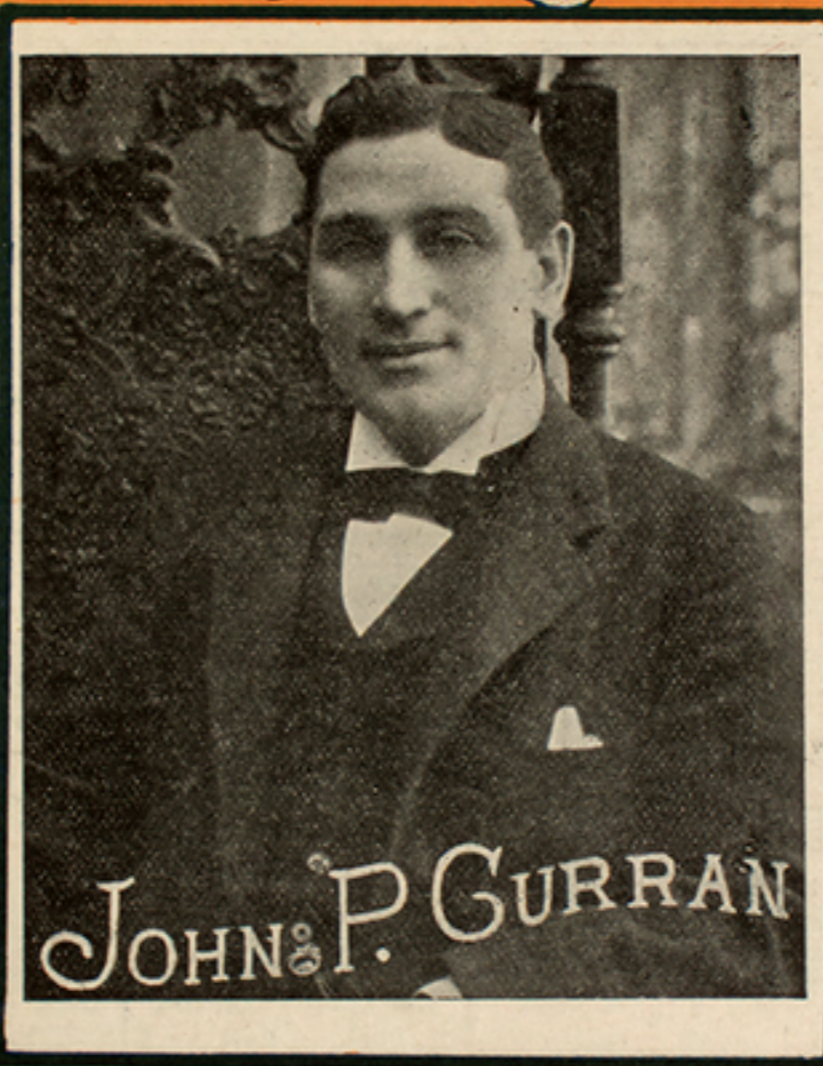


THE AUTHOR'S COMPANION TO "THE MANSION OF ACHING HEARTS" 

A BRAND PLUCKED

FROM THE

BURNING



MR LAMB
IS
THE AUTHOR
OF
THE MANSION
OF ACHING HEARTS
"JENNIE LEE"
"A BIRD IN A
GILDED CAGE"
"ASLEEP
IN THE DEEP."

MR MILLS
IS THE COMPOSER
OF
"GEORGIA CAMP
MEETING"
"FARE THE WELL,
MOLLY DARLING"
"WHISTLING RUFUS"
"HARMONY MOZE"

5
WORDS BY

ARTHUR J. LAMB

MUSIC BY

KERRY MILLS

F. A. MILLS 48 West 29th St. N.Y.

A Brand plucked from the Burning.

Words by
ARTHUR J. LAMB.

Music by
KERRY MILLS.

Valse Moderato.

mf

The piano introduction is in 3/4 time, marked *mf*. It features a melody in the right hand and a supporting bass line in the left hand, both in a key signature of two flats.

The first system of the vocal and piano accompaniment. The vocal line begins with the lyrics: "The wed - ding bells ring sweet - ly ——— And voi - ces whis - per Up - on the qui - et land - scape ——— The gol - den moon - light". The piano accompaniment continues from the introduction.

The second system of the vocal and piano accompaniment. The vocal line continues with the lyrics: "low, ——— As down the aisle to - geth - er ——— A bride and gleams, ——— As just out - side her cot - tage ——— A moth - er".

The third system of the vocal and piano accompaniment. The vocal line concludes with the lyrics: "bride - groom go ——— In ho - ly bonds of wed - lock. ——— They've sits and dreams ——— She's dream - ing of the daugh - ter ——— Who's".

Copyright 1902 by F. A. Mills. 48 W. 29th St. N.Y.
English Copyright secured.

W. O. BROWN,
TEAR, COFFEES & BAKING POWDER.

bound each trust - ing heart._____ For bet - ter or for worse
 been for years a - way._____ From whom she's had no let - -

and till death these two shall part._____ Two wom - en stand to -
 ter for ma - ny a wea - ry day._____ And now on hear - ing

geth - er_____ Out - side the church - 's door_____ And of the
 voi - ces_____ Her eyes are o - pened wide_____ To see her

bride they're talk - ing_____ They knew her years be - fore_____ She
 own dear daugh - ter_____ With some - one by her side_____ "I'm

was so wild and way-ward — “She must have loved to wed” — “Does the
 mar-ried, moth-er dar-ling — To one who loves me true” — And

bride-groom know her sto-ry"? — Then soft the oth-er said: —
 as they kiss each oth-er — The glad tears fall a - new —

CHORUS.

'Tis a brand that was plucked from the burn-ing — 'Tis a soul that is

saved, so they say — 'Tis a wom - an from dark - ness

turn-ing ——— To the light of a bet - ter day ——— Let us

hon - or the hand that has saved her ——— And the heart that did

faith - ful prove ——— For the brand that was plucked from the

burn-ing ——— Is a wom - an — saved by love. ———