





# THE ELEVATOR MAN

## GOING UP, GOING UP, GOING UP, GOING UP!

By IRVING BERLIN

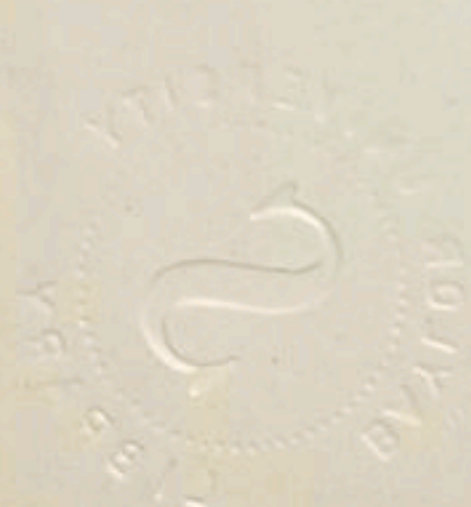
*Allegro moderato*

Piano introduction in B-flat major, 2/4 time. The right hand features a rhythmic melody with eighth notes and quarter notes, while the left hand provides a steady accompaniment of quarter notes. Dynamics range from *f* to *ff*.

Vocal line and piano accompaniment for the first line. The vocal line begins with a rest followed by the lyrics "An - dy An - dy". The piano accompaniment includes a section marked "Till Ready" with a dynamic of *p*.

Vocal line and piano accompaniment for the second line. The vocal line contains the lyrics: "Gray, young and gay, was an el - e - va - tor - man, Gray, young and gay, went and mar-ried Man - dy Brook,". The piano accompaniment is marked with a dynamic of *p*.

Copyright 1912 by Waterson, Berlin & Snyder Co.  
 International Copyright Secured.  
 Copyright Canada 1912 by Waterson, Berlin & Snyder Co.





Like an av - i - a - tor, in his el - e - va - tor,  
We dis - cov - ered la - ter, that the el - e - va - tor

All day long he was on the job; tak - ing peo - ple  
Was the place where the knot was tied; tied while they were

up and down. Man - dy Brook, as a cook, start - ed  
go - ing up. Soon a gal, known as Sal, came to

work - ing in the place, And they found her la - ter, in the el - e - va - tor,  
work in Mandy's place, And they found her la - ter, in the el - e - va - tor,



With An - dy, so hand-y, said Man-dy, "It's dan - dy!"  
 With An - dy, so dan - dy, and han - dy, like Man-dy,

CHORUS

Go-ing up, go - ing up, Go - ing up, go - ing up, With the el - e - va - tor

man;..... Go - ing up, go - ing up, Go - ing up, go - ing up,

I feel like bar - rels of dy - na - mite, Blowing up, blowing up,



Blowing up, blowing up, Ev' - ry pleasure in the land, It makes me

act ..... Just like a fun - ny coon, I ..... could

spend my hon - ey-moon, Go-ing up, go-ing up, Go-ing up, go-ing up,

With the el - e - va - tor - man. .... - man. ....

*ff* *fz* *D.S.*



TRY THIS ON YOUR PIANO  
MY LOVE FOR YOU

Words by  
JOHN NOBBS

Music by  
TED SNYDER

CHORUS

When the spring-time is flow-er-less,.....

*mf* *dolce*

When the dark clouds are show-er-less,..... When the

temp-est is pow-er-less,..... Then may my heart prove un-

true; ..... When the moon ris-es nev-er-more,.....

Copyright 1911 by Ted Snyder Co. Inc. 112 W. 38th St. N.Y.

FOR SALE BY ALL DEALERS