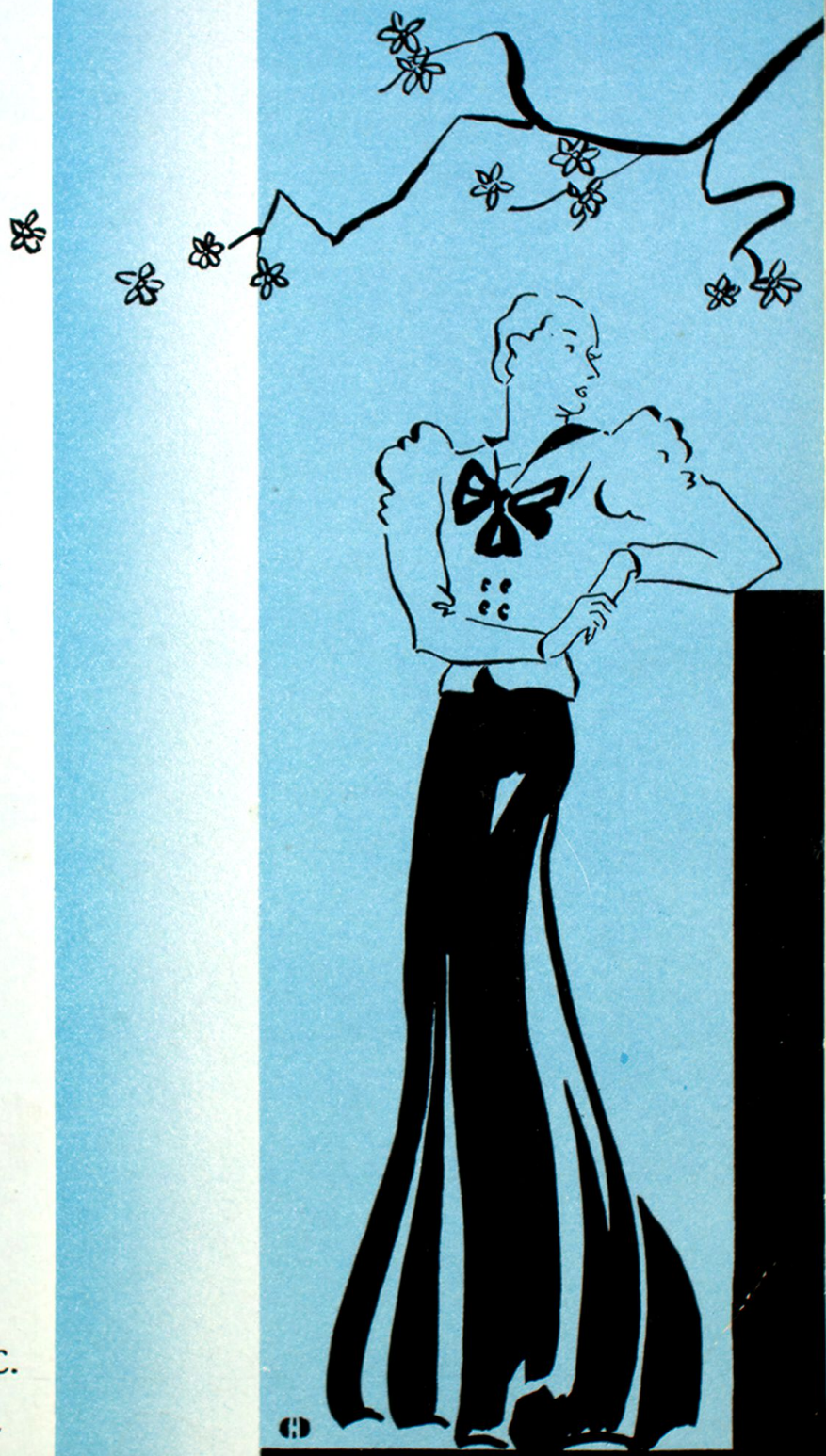
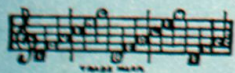


IRVING BERLIN'S

I CAN'T REMEMBER



Irving Berlin, Inc.
MUSIC PUBLISHERS
1607 Broadway New York



MADE IN
USA

I CAN'T REMEMBER

*) Tune Ukulele


G C E A

By
IRVING BERLIN

Tempo di Valse

Piano introduction in 3/4 time, marked *f*. The music features a melody in the right hand and a bass line in the left hand, with a prominent chordal accompaniment.

*) Letters over diagrams are names of the chords in original key and are adaptable to Banjo or Guitar.

VOICE 

I met you, I re -

Piano accompaniment for the first vocal line, marked *mf*. It includes a left hand part labeled *l.h.* and a right hand part with chords.

mem - ber, But try as I may, I can't seem to re -

Piano accompaniment for the second vocal line, including a bell sound effect labeled *Bell*.

C(open) Gaug F7 E

mem - ber, The time or the day, I met you, I re -

Bell

mf

Ealt Ealt Ealt E

mem - ber, That's all I can say. Was it

Bell

p

Emi F#7 Dmi Fmi C C dim G7

Au - gust or Sep - tem - ber, Or A - pril or May?—

Bell

WARNING!

Any one who copies the words or music of this song, or any portion thereof, will be criminally prosecuted, under section 28 of the United States Copyright Law, and section 441^a of the New York Penal Law....

CHORUS



I CAN'T RE - MEM - BER, The

p-f

first time we met, Was it cloud - y or beau - ti - ful? I

f-ff

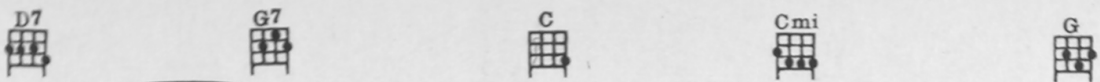


CAN'T RE - MEM - BER, The

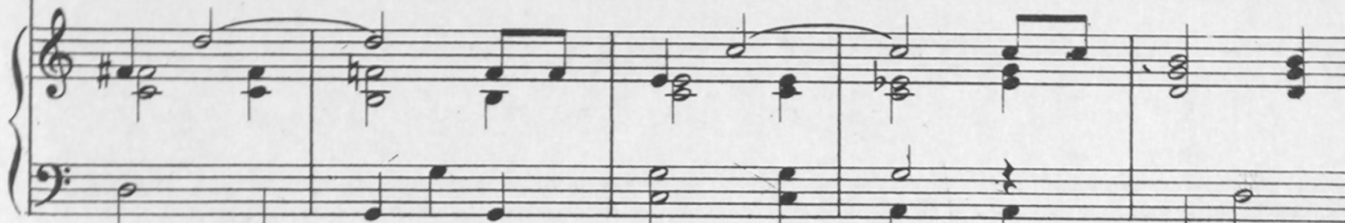



first words I spoke, Did I say you were beau - ti - ful? Was it







 Sun - day? _____ Was it Mon - day? _____ Were you dressed in






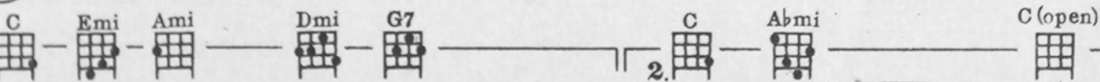
 gray or in blue, _____ I CAN'T _____ RE -





 MEM - BER, _____ For all I re - mem - ber is





 you. I you. _____

