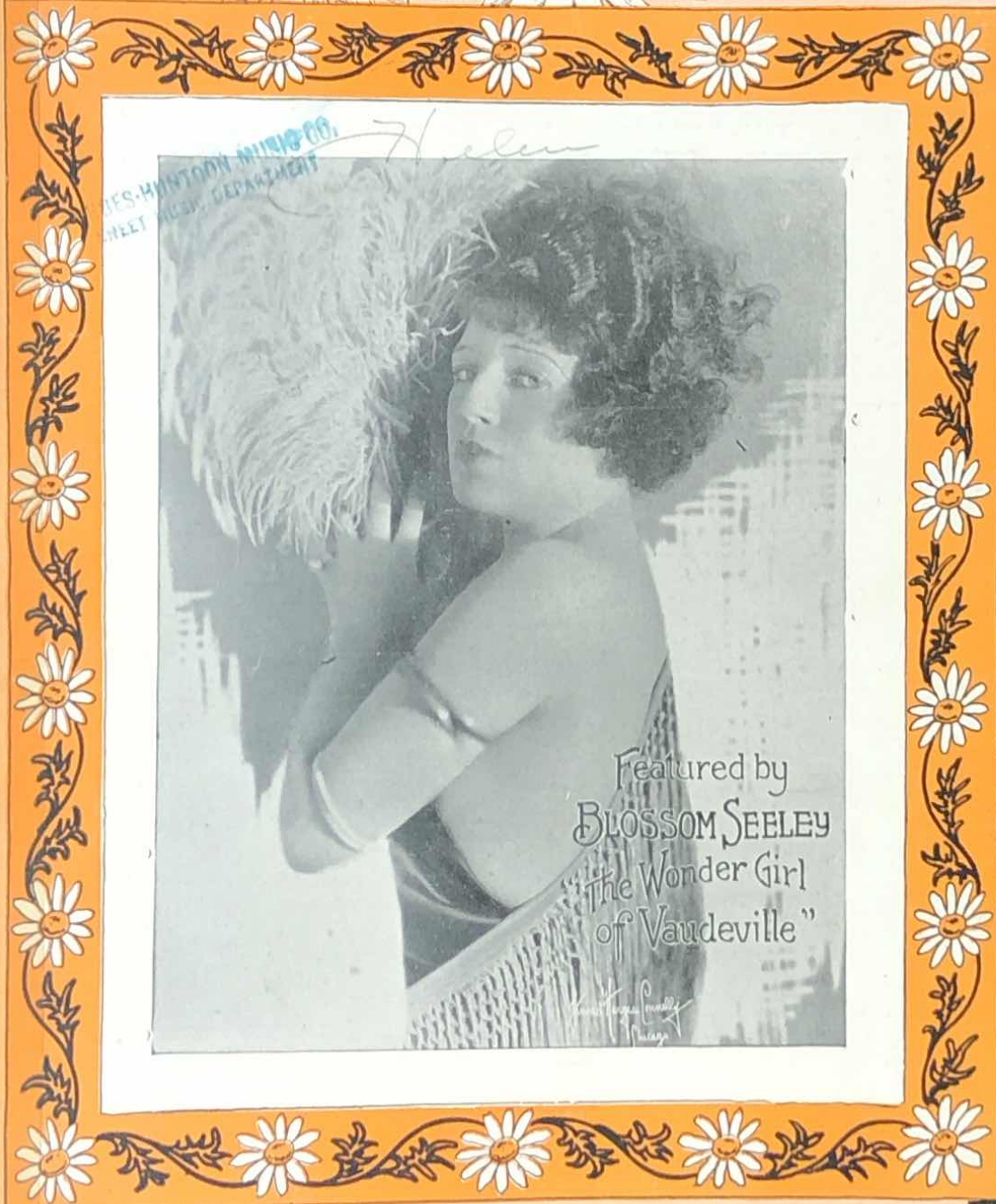


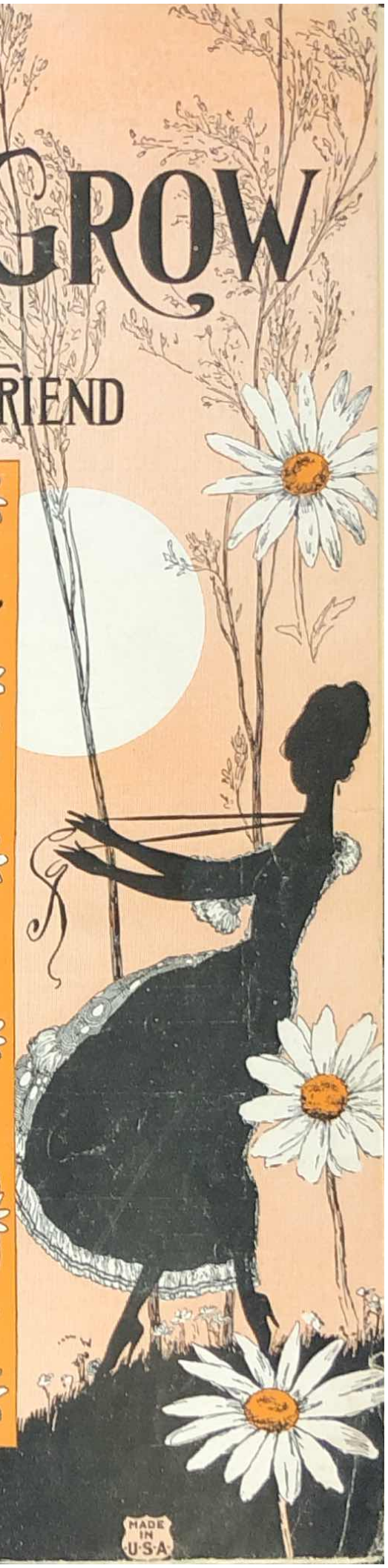
OPERATIC EDITION

WHERE THE LAZY DAISIES GROW

Song by
CLIFF FRIEND



Featured by
BLOSSOM SEELEY
"The Wonder Girl
of Vaudeville"



JEROME H. REMICK & CO.
NEW YORK DETROIT

MADE
IN
U.S.A.

WHERE THE LAZY DAISIES GROW

SONG

By CLIFF FRIEND

Moderato

PIANO

The piano introduction is in 4/4 time, marked Moderato. It features a treble clef with a key signature of two flats (Bb and Eb). The melody is composed of eighth and quarter notes, with accents (^) over the first, third, and fifth measures. The bass line consists of a steady eighth-note accompaniment.

VOICE

I'm tired of drift-in' shift-in' lift-in' troubles from my weary
Each time I close my drear-y weary eyes I see the skies of

The voice line begins with a rest for two measures, then enters with the melody. The piano accompaniment continues with a steady eighth-note bass line and chords in the treble clef. Dynamics include *mf* and *p*.

mind blue Cit-y life drives me diz-zy Always both-ered and
blue And I dream of my child-hood Hap-py days in the

The voice line continues with the melody. The piano accompaniment features a more active treble line with some sixteenth-note patterns. Dynamics include *mf* and *p*.

bus-y wild-wood Say I'm so sick of all this hur-ry and its wor-ry how my poor heart
I dream but what's the use of schem-ing schemes and dreaming dreams that won't come

The voice line concludes with the melody. The piano accompaniment maintains the eighth-note bass line and chordal accompaniment.

Copyright MCMXXIV by JEROME H. REMICK & CO., New York & Detroit
Propiedad para la Republica Mexicana de Jerome H. Remick & Co., New York & Detroit. Depositada conforme a la ley
MADE IN U. S. A.

601 - 4

ALL RIGHTS RESERVED
INCLUDING PUBLIC PERFORMANCE FOR PROFIT

International Copyright Secured

pines — Ev-'ry time I re - call — Sweet-est mem'ries of all —
 true — 'Cause it does-n't seem fair — How I long to be there —

CHORUS

Gee it would be great if I could go to sleep and wake up where the la - zy dai - sies

grow One I love and two I love and three I'd love to wan - der where the

la - zy dai - sies grow Life to me would al - ways be a

hol - i - day_ Down in the fields that I once knew

'Cause if it sat-is - fies the bees and but-ter - flies Then Id be sat-is - fied

too Just like Huck-le - ber - ry Finn Id wear a grin if I were in the

land of sun - ny smiles Just to see the one I love the

one I'm al-ways dream-ing of I'd walk a mil-lion miles

There is where the world's as fair as Par-a-dise A lit-tle bird-ie told me

so oh Gee it would be great if I could go to sleep and wake up where the

la - zy dai - sies grow 1. 2. D. S.

D. S.