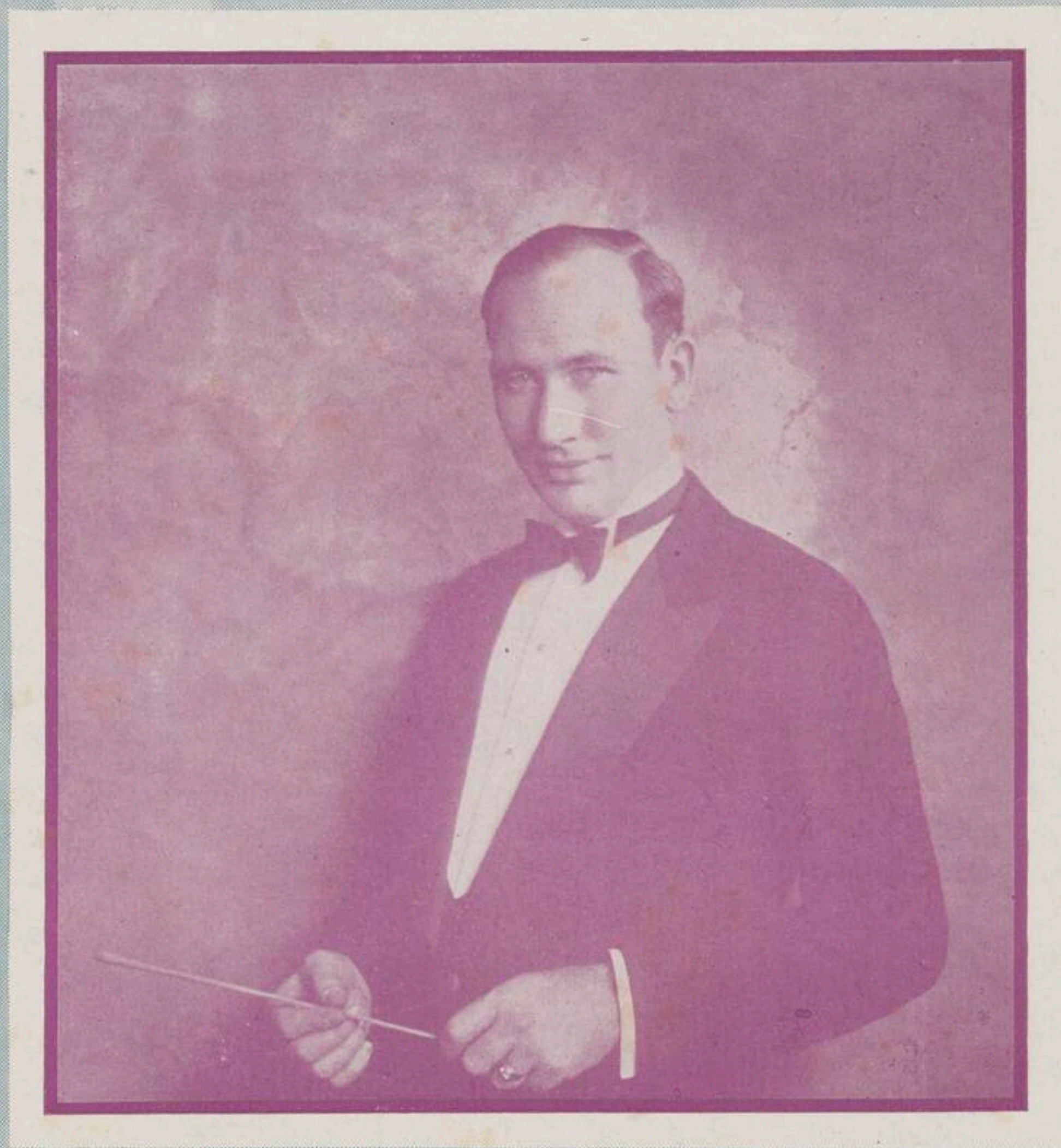


M6782
1856

THE VOICE IN THE OLD VILLAGE CHOIR



WORDS BY
GUS KAHN
MUSIC BY
HARRY WOODS



Featured by
ISHAM JONES
and his Orchestra

ROBBINS MUSIC CORPORATION *New York*
by arrangement with
Campbell, Connelly, Inc.

Try this Melody Over

Lyric by
GUS KAHN

I'll Never Be The Same

Melody by
MATT MALNECK and
FRANK SIGNORELLI

Refrain
(with expression)

Ukulele chord diagrams: Eb7, D7, Eb7, D7, G, D7, G.

Lyrics: Nev - er Be The Same Stars have lost their mean-ing for me
Nev - er Be The Same Noth - ing's what it once used to be And when the

Dynamic markings: mp-f

Copyright 1932 by Robbins Music Corp.; 799 Seventh Ave., New York, N. Y.

International Copyright Secured

Printed in U. S. A.

All Rights Reserved

Dedicated to Ethel Skutta

Rock-a-Bye Moon

By HOWARD JOHNSON
FRED STEELE
MORTON LANG

Ukulele chord diagrams: C, Gmi, A7, D7, Dmi, G7, D7, G7.

Lyrics: Rock-a-Bye Moon thru the tree - tops Shine down on me as of
yore Then all my tears will be wee drops

Dynamic markings: a tempo, p a tempo

Ukulele Arr. by MAY SINGHI BREEN "The Ukulele Lady"

* Letters over diagrams are names of the chords
in original key and are adaptable to Banjo or Guitar

CODE - Rockabye
SH 854 - 4

Copyright 1932 by Metro-Goldwyn-Mayer Corp. New York, N. Y.
Exclusive Distributors Robbins Music Corp., 799 Seventh Ave., N. Y. For United States and Canada

International Copyright Secured

All Rights Reserved

* Tune Ukulele
or Banjulele Banjo

G C E A

Complete Song May Be Purchased From Your Favorite Dealer



The Voice In The Old Village Choir

Lyric by
GUS KAHN

Music by
HARRY WOODS

Waltz Tempo (Slow)

Mem-'ries are treas-ures locked in my heart I mean to
I heard her sing - ing long, long a - go, I still re -

keep ev - er - more _____ Of all my treas - ures
-mem - ber her song _____ I hear her sing - ing

one stands a - part, Saved from the dear days of yore. _____
when lights are low, Tho' she's been si - lent so long. _____

poco rit.

Ukulele Arr. by MAY SINGHI BREEN "The Ukulele Lady"

Letters over diagrams are names of the chords in original key and are adaptable to Banjo or Guitar.

Tune Ukulele
or Banjulele Banjo
A D F# B
Put Capo on 1st Fret

CODE-Choir
SH 807-3

Copyright 1932 by Campbell, Connelly, Inc. 580 Fifth Ave., New York, N.Y.

Copyright For U.S. and Canada Assigned 1932 to Robbins Music Corporation, 799 Seventh Ave., New York, N.Y.

International Copyright Secured

All Rights Reserved

Chorus

a tempo

p

I hear a voice so sweet and low, The

This system contains the first line of the chorus. The vocal line starts with a double bar line and a repeat sign. The piano accompaniment begins with a piano (*p*) dynamic. The key signature has two flats (Bb and Eb), and the time signature is 3/4. Chord diagrams for Eb, Eb7, Ab, and Abmi are shown above the vocal line.

Voice In The Old Vil - lage Choir _____ It

This system contains the second line of the chorus. The vocal line continues with a long note for 'Choir'. The piano accompaniment features a melodic line in the right hand and a bass line in the left hand. Chord diagrams for Eb, Bb7, Eb, and Bbaug are shown above the vocal line.

sings to me of long a - go The

This system contains the third line of the chorus. The vocal line continues with a long note. The piano accompaniment continues with similar harmonic support. Chord diagrams for Eb, Eb7, Ab, and Abmi are shown above the vocal line.

Voice In The Old Vil - lage Choir _____ In

This system contains the fourth line of the chorus. The vocal line continues with a long note. The piano accompaniment concludes the phrase. Chord diagrams for Eb, Bb7, Eb, and Eb7 are shown above the vocal line.

WARNING!

Any person who willfully and for profit copies the whole or any part of the words or music of this song, shall be liable to criminal prosecution under the United States Copyright Laws.

Ab Eb Gmi Bbmi

dreams I drift thru the twi - light haze Home to the

C7 F7 Bb7 Eb Eb7

scenes of my child - hood days. To hear a - gain when

Ab Abmi Eb Bb7

lights are low The Voice In The Old Vil - lage

1. Eb Eb dim Bb7 Bbaug 2. Eb

Choir. I Choir.

mf *dim.*

ASK FOR THE ROBBINS EDITION

FIFTY FAMOUS FAVORITES

The only Folio ever published containing complete verse & chorus of such good old time songs as "SILVER THREADS AMONG THE GOLD" "SIDEWALKS OF NEW YORK"

FOUR HITS OF THE DAY

THE NEWEST AND GREATEST
OF ISHAM JONES' SONGS

IF YOU WERE ONLY MINE

Chorus (Slow with Feeling)

If You Were On - ly Mine - If You Were On - ly Mine - I know the
sun would shine for me - I'd find my

BEN BERNIE'S NEW
SONG SENSATION

HOLDING MY HONEY'S HAND

Chorus (with feeling)

I for - get a - bout the weath - er - 'Cause I think it's sim - ple -

ALSO
ON ALL
RECORDS
and ROLLS

ANOTHER ENGLISH
SONG SUCCESS

LAZY DAY

Chorus (Slow with Feeling)

La - zy Day when spring and sum - mer meet La - zy Day

AGAIN -
A CALIFORNIA SONG SENSATION

GOODNIGHT, MY LOVE

Chorus (with expression)

Good - night, My Love, Sweet dreams to you,

ROBBINS MUSIC CORPORATION
799 Seventh Avenue, New York