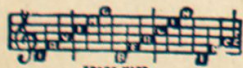


SONGS OF YESTERDAY

Tango Melody

FROM THE
The "COCOANUTS"

Lyrics and Music by
IRVING BERLIN



IRVING BERLIN Inc.
Music Publishers
799 SEVENTH AVE., NEW YORK, N.Y.

MADE IN
U.S.A.

Tango Melody

Tune Ukulele
G C E A

Words and Music
By IRVING BERLIN

Moderato

The piano introduction consists of two staves. The right hand features a series of chords and eighth-note patterns, while the left hand plays a steady eighth-note bass line. The tempo is marked 'Moderato'.

VOICE

The first system of the vocal and piano accompaniment. The vocal line begins with a rest, followed by the lyrics 'Spain! a lone-ly re -'. The piano accompaniment continues with the same rhythmic pattern as the introduction.

The second system of the vocal and piano accompaniment. The vocal line continues with the lyrics 'frain A glass of cham-pagne A heart that is yearn - ing'. The piano accompaniment includes some chords marked with a '7' and a 'p' (piano) dynamic.

The third system of the vocal and piano accompaniment. The vocal line concludes with the lyrics 'Spain! the sto - ry is plain'. The piano accompaniment features some chords marked with a '7' and a 'p' dynamic.

Ukulele Arr. by MAY SINGHI BREEN.

A maid-en, in vain _____ a - waits his re - turn - ing _____

CHORUS

They met one night, when the moon shone bright, and they soon ro-manced _____ As to-gether they

p-f

danced _____ To a Tan-go Mel - o - dy _____ He praised her charms as with-in his

arms, she was held and kissed _____ For she could-n't re - sist _____ To a Tan-go

Mel-o-dy _____ Dawn! _____ and soon he was gone, _____

But lin-ger-ing on _____ was a ten-der mem-o - ry _____ He left a

tear, as a sou-ve - nir, For she waits in vain _____ with a brok-en re - frain _____

- Of a Tan-go Mel-o - dy _____ They met one Mel-o - dy _____