

SWANEE SHUFFLE

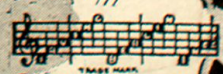
BY
IRVING BERLIN

From
"HALLELUJAH"
Produced by
KING VIDOR
*A Metro-Goldwyn-Mayer
Talking Singing Picture*



Irving Berlin, Inc.
MUSIC PUBLISHERS
1607 Broadway New York

MADE IN
U.S.A.



Swanee Shuffle

Tune Ukulele
or Banjulele Banjo

By IRVING BERLIN

A D F# B

Put Capo on 1st Fret

Moderato

Piano

f

Vamp

p

Voice

The ben - ev - ol - ent ord - er of the flat foot - ed wait - ers,

p

gave their an - nu - al ball, With the price of ad - miss - ion on - ly

Ukulele Arr. by
MAY SINGHI BREEN

Copyright 1929 by IRVING BERLIN Inc., 1607 Broadway N.Y.C.

International Copyright Secured

Made in U. S. A.

All Rights Reserved

one half a doll - ar. They just crowd - ed the hall,

flat foot - ing a - round, they sud - den - ly found — An o -

rig - in - al move - ment that they call Swa - nee Shuf - fle. It's for one and for all —

Chorus

Learn to do the Swa - nee Shuf - fle, Noth - ing to the Swa - nee Shuf - fle,

p-f

A-gainst the beat, you make your feet Swa-nee Shuf - fle a - long —

If they're flat just make em flat - ter like a pan - cake on a plat - ter,

I'm tell - ing you it's eas - y to Swa-nee Shuf - fle a -

long — Just im - i - tate the way a wait - er walks with a plate of chow

— You need- n't wait you'll do it lat-er so why not now? I'll

show you how_ Come with me where Dix- ie march - es, march-es on its

fall - en arch - es, and see them Swa - nee Shuf - fle a -

long. long.