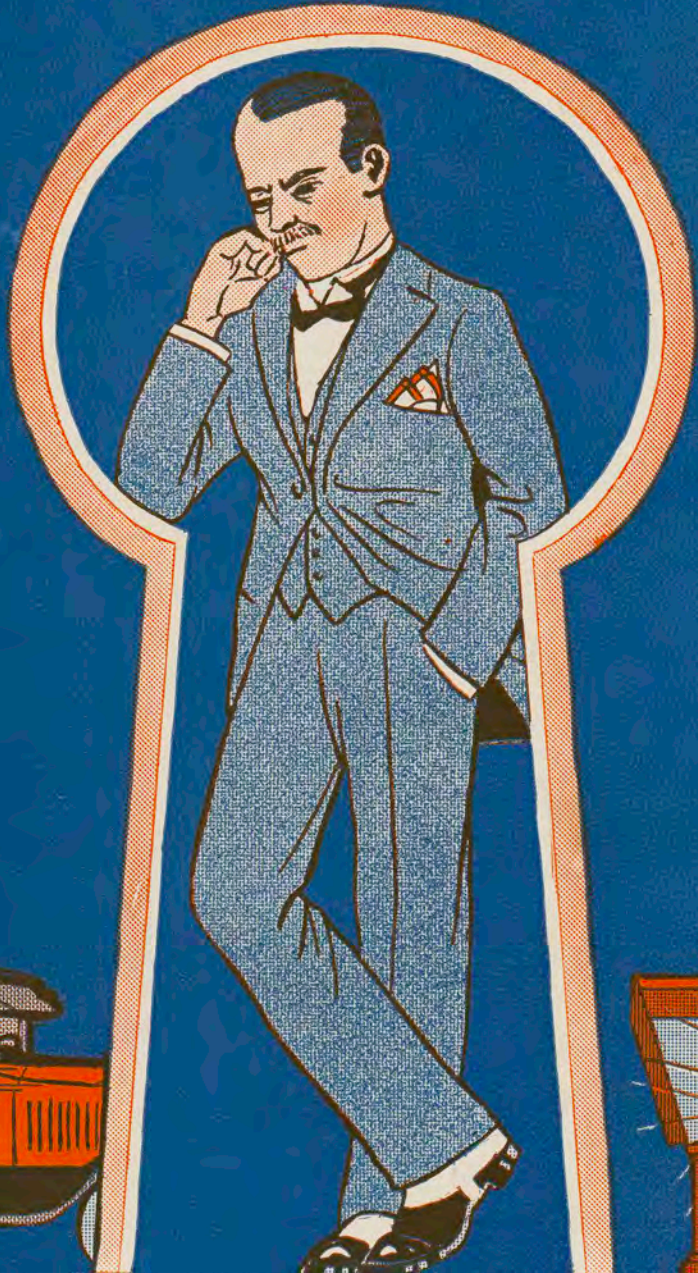


MAY 19, 1926

JAMES EDWIN JOHNSON  
9 SOUTH FIFTH STREET  
NEW YORK, N.Y.

# POOR PAPA

(HE'S GOT NOTHIN' AT ALL)



WITH UKULELE ARRANGEMENT



Words by  
**BILLY ROSE**

Music by  
**HARRY WOODS**



Irving Berlin, Inc.  
MUSIC PUBLISHERS  
1607 Broadway New York

MADE IN USA

# POOR PAPA

(He's Got Nuthin' At All)

Words by  
BILLY ROSE

Tune Ukulele  
A D F# B

Music by  
HARRY WOODS

Moderato

Piano

*f*

The piano introduction consists of two staves. The right hand plays a melody in treble clef with a key signature of one sharp (F#) and a 2/4 time signature. The left hand plays a bass line in bass clef. The tempo is marked 'Moderato' and the dynamic is 'f'.

*fz* *mf* *Vamp*

The piano continuation continues with two staves. It features a 'Vamp' section where the right hand plays chords and the left hand plays a steady bass line. Dynamics include 'fz' and 'mf'.

VOICE

Don't get mar - ried don't get mar - ried, Said my friend Mc - Bride,  
Then Mac cried: Oh what a life, I've got no chance at all,

The vocal line is on a single staff in treble clef. Below it is the piano accompaniment for the first verse, consisting of two staves. The piano part is marked 'p'.

If you take a wife, You're out of luck for life,  
Once a girl gets you, You'll look like I do too,

The vocal line continues on a single staff. Below it is the piano accompaniment for the second verse, consisting of two staves. The piano part includes chord diagrams above the staff.

Ukulele Arr. by MAY SINGHI BREEN

Copyright MCMXXXVI by IRVING BERLIN Inc., 1607 Broadway, N. Y. C.

...  
TH  
NUM  
c  
be  
for  
Phono  
or  
Pla  
Pi  
...

He had all his lit - tle sons, and daugh - ters by his side, Like  
Then he lined his chil - dren up, The short ones and the tall, And

Hap - py Hool - i - gan's six - teen kids, They all lined up and cried.  
as they marched down the a - ven - ue, You should have heard them bawl.

CHORUS

Ma - ma's got shoes, ma - ma's got clothes, Ma - ma's got these and

*p-f*

ma - ma's got those, But poor pa - pa poor pa - pa,

He's got noth in' at all. Ma - ma goes here

ma - ma goes there Ma - ma goes out to ev - 'ry af fair, But

poor pa-pa poor pa-pa He waits out in the hall,

Christ-mas comes and ma - ma gets The most ex - pen - sive

frocks, Pa - pa gets a neck-tie and a pair of ten cent

socks. Ev - 'ry one cheers when ma ma ap - pears,

She's got dia - monds stuck in her ears, But poor pa - pa,

poor pa - pa, He's got noth - in' at all.

...  
 IS  
 BER  
 n  
 had  
 our  
 graph  
 our  
 ver -  
 no  
 ...



# THE UP-TO-THE-MINUTE SONG HIT

## I "WANNA" GO WHERE YOU GO — DO WHAT YOU DO THEN I'LL BE HAPPY

Words by  
SIDNEY CLARE  
& LEW BROWN

Music by  
CLIFF FRIEND

### CHORUS

I "wan - na" go where you go — do what you do —

love when you love — then I'll be hap - py — I "wan - na" sigh when you sigh —

Cry when you cry — smile when you smile — then I'll be hap - py — If you go

Copyright MCMXXV by IRVING BERLIN Inc., 1607 Bway, N. Y.  
International Copyright Secured      MADE IN U.S.A.      All Rights Reserved

COPIES ON SALE WHEREVER MUSIC IS SOLD  
This Number can also be had for your Phonograph and Player Piano