



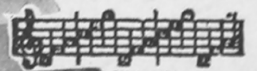
Marching Along With Time

FROM THE
TWENTIETH CENTURY FOX FILM PRODUCTION
"ALEXANDER'S RAGTIME BAND"

By
IRVING BERLIN



Published by
IRVING BERLIN, Inc.
799 SEVENTH AVE., NEW YORK



MARCHING ALONG WITH TIME

FROM THE
TWENTIETH CENTURY FOX FILM PRODUCTION
"ALEXANDER'S RAGTIME BAND"

By IRVING BERLIN

Moderato

mf

Piano introduction in B-flat major, 4/4 time, marked Moderato. The piece begins with a melodic line in the right hand and a rhythmic accompaniment in the left hand. The melody consists of eighth and sixteenth notes, creating a marching feel. The left hand features a steady eighth-note bass line.

VOICE

E_b

This world of ours is ever chang - ing

Fm7

B_b9

Gm7

Cm7

Fm7

B_b7

mp

Piano accompaniment for the first vocal line. The right hand plays chords and moving lines, while the left hand provides a steady bass line. The dynamics are marked *mp*.

E_b

The hand of time keeps re - ar - rang - ing

Fm7

B_b9

Gm7

Cm7

Fm7

B_b7

Piano accompaniment for the second vocal line. The right hand plays chords and moving lines, while the left hand provides a steady bass line.

Gm

Daug.

Gm

F7

B_b

With ev - 'ry change I'm right on the beat

Piano accompaniment for the third vocal line. The right hand plays chords and moving lines, while the left hand provides a steady bass line. The piece concludes with a final chord in the right hand.

* Symbols for Guitar, Chords for Ukulele and Banjo.



Fm C aug Fm Bb7 Ab Ab aug Bb7 3

Wont let the grass — grow un-der my feet — I'm

CHORUS *March tempo with Bounce* Ebm

MARCH-ING — A - LONG WITH TIME — I'll be march - ing — from

Bb aug. Ebm7 Ab7 Db7 Gb Bb dim.

time to time, For I'm not gon - na let — the pa-rade go by —

Bb9 Gm Bb7 Eb Fm Ab Abm Eb Fm7 Bb aug

You know that time — marches on — and so — do I —

WARNING! Any one who copies the words or music of this song, or any portion thereof, will be criminally prosecuted, under Marching Along etc. - 4 section 28 of the United States Copyright Law, and section 4412 of the N.Y. Penal Law.

One day - I changed my horse for a mo - tor - And now of course I'll be
 chang - ing my car - for a plane to fly, - You know that time
 - march - es on, - and so do I. - There'll be a
 change in mu - sic - A change in rhy - thm, - A

change in danc - ing — But I'll be — right with 'em,

Watch me — and you will find that I just won't — be left be-hind; Fath - er

Time march - es on with his head up high, — and so — do I —

1. Eb Ab Cdim. Bb7 2. Eb Ab Abm Eb