

Lyric by
MORT DIXON
and BILLY ROSE

WOULD YOU LIKE TO TAKE A WALK

(SUMP'N GOOD'LL COME FROM THAT)

Music by
HARRY WARREN

BILLY ROSE
presents

D7636
2027

JAMES BARTON ~ FANNIE BRICE
GEORGE JESSEL *in*

SWEET *and* **LOW**



Staged by
ALEXANDER LEFTWICH

Dances Directed by
DANNY DARE

Additional Dances by
BUSBY BERKELEY

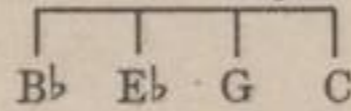
Remick Music Corp.
219 W. 46TH ST., New York

MADE IN U.S.A.

Would You Like To Take A Walk

(Sump'n Good'll Come From That)

Tune Ukulele or Banjulele Banjo



Lyric by
MORT DIXON &
BILLY ROSE



Music by
HARRY WARREN

Moderato

VOICE

PIANO

* D7 A7 Bmi. A7

I saw you stroll-ing by your sol-i - tar-y Am I nose-y ver-y
My lit-tle heart is full of pal-pi - ta-tion What I need is con-so -

Bmi. A7 D7 A7 Bmi. E7

ver-y I'd like to bet a juic-y huck-le - ber-ry What you're af - ter is a
- la-tion I'd like to stage a lit-tle cel-e - bra-tion In the moon-light right a -

* Letters over Uke diagrams are for Guitar and Banjo but are written half tone lower for simplicity.

Copyright MCMXXX by REMICK MUSIC CORP., New York
International Copyright Secured Made in U. S. A.
ALL RIGHTS RESERVED INCLUDING PUBLIC PERFORMANCE FOR PROFIT

A Emi. D A7 Bmi. A E7 F#mi. A+ rit.

gal We're both in luck for in - tro - duc - tions are not nec - es - sa - ry.
- way I'll feel all pep't if you'll ac - cept my friend - ly in - vi - ta - tion.

poco rit.

CHORUS Emi.7 Gmi. add E A7 D Emi.7 Gmi. add E

Mm - Mm - Mm Would you like to take a walk? Mm - Mm - Mm Do you

p-f a tempo

D Emi.7 D Emi.7 Gmi. add E D B7

think it's gon - na rain? Mm - Mm - Mm How a - bout a sas - par - il - la?

Emi. Gmi. D A7 D

Gee the moon is yel - ler Sum - p'n good - 'll come from that

Emi7 Gmi. add E A7 D Emi. Gmi. add E

Mm - Mm - Mm Have you heard the lat - est song? Mm - Mm - Mm It's a

D Emi.7 D Emi.7 Gmi. add E D B7

ver - y pret - ty strain Mm - Mm - Mm Don't you feel a lit - tle thrill-y?

Emi. Gmi. D A7 D

Gee it's get-ting chill-y Sum-p'n good - 'll come from that When you're

Ami.7 D7 G D7

stroll - ing thru the where-zis — You need a who - zis — to lean up -

G G7 C F#7 Bmi. F#7

- on But when you have no who - zis — To hug and what - zis gosh

B Emi.7 Gmi. add E A7 D Emi. Gmi. add E

darn Mm-Mm-Mm Would you like to take a walk Mm-Mm-Mm Do you

D Emi.7 D Emi.7 Gmi. add E D B7

think it's gon - na rain? Mm - Mm - Mm Ain't you tired of the talk - ies?

Emi. Gmi. D A 1. D D7 G D7 2. D

I pre-fer the walk-ies Sum-p'n good - 'll come from that. that.

From Warner Bros. Picture "MAYBE IT'S LOVE"

Maybe It's Love



REFRAIN

Words and Music by
SIDNEY D. MITCHELL
ARCHIE GOTTLER
& GEORGE W. MEYER

What am I yearn-ing for? May-be it's love. —

Yearn-ing for more and more May-be it's love. — This strange con-

-di-tion came up - on me so fast, — I've got a feeling that I'm

fall-ing at last, — Some-thing is thrill-ing me, May-be it's love. —

Copyright MCMXXX by HARMS Inc.
 Copyrighted in South America for Harms Inc., by Harry Kosarin, Rio de Janeiro
 Propiedad Asgurada Para Harms Inc., en Republica Argentina For Harry Kosarin, Buenos Aires
 Propiedad Asgurada Para Harms Inc., en Republica Uruguay For Harry Kosarin, Montevideo
 International Copyright Secured Made in U. S. A.
 ALL RIGHTS RESERVED INCLUDING PUBLIC PERFORMANCE FOR PROFIT

