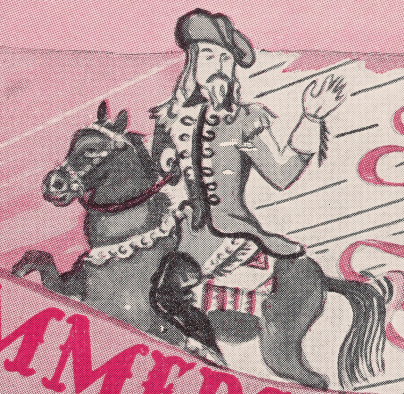


WHO DO YOU LOVE I HOPE

RODGERS and HAMMERSTEIN
PRESENT

ETHEL
MERMAN



GET YOUR
ANNIE GUN

LYRICS and MUSIC by

IRVING
BERLIN

BOOK BY

HERBERT
and
DOROTHY
FIELDS

DIRECTED BY JOSHUA LOGAN

DANCES BY HELEN TAMIRIS

COSTUMES BY LUCINDA BALLARD

Moonshine Lullaby	I'm An Indian Too
I'm a Bad Bad Man	Colonel Buffalo Bill
The Girl That I Marry	Anything You Can Do
My Defenses Are Down	I Got Lost In His Arms
They Say It's Wonderful	I'll Share It All With You
Who Do You Love I Hope	Doin' What Comes Natur'lly
I've Got the Sun in the Morning	You Can't Get a Man With a Gun
There's No Business	Like Show Business

SCENERY BY JO MIELZNER

60¢

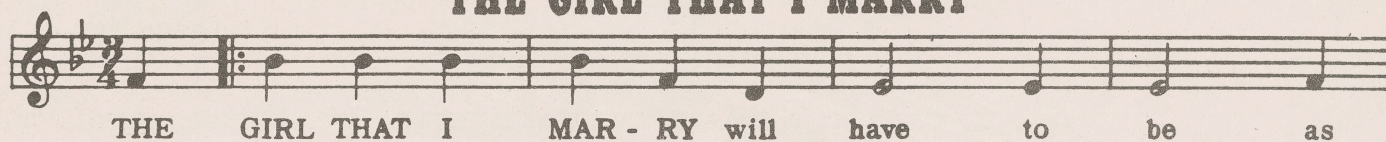
IRVING BERLIN MUSIC COMPANY
1650 BROADWAY...
NEW YORK, 19, N.Y.

EXCERPTS from the **MUSICAL PRODUCTION**

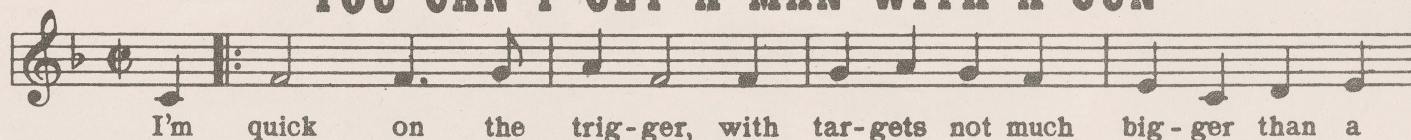
"ANNIE GET YOUR GUN"

WORDS AND MUSIC BY
IRVING BERLIN

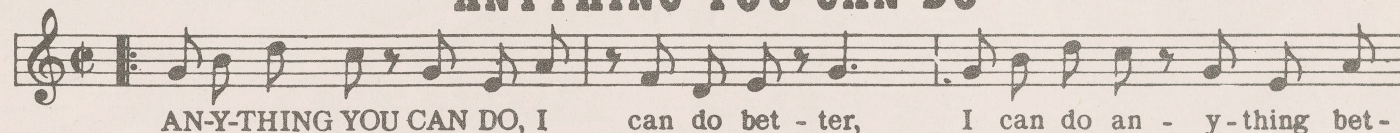
THE GIRL THAT I MARRY



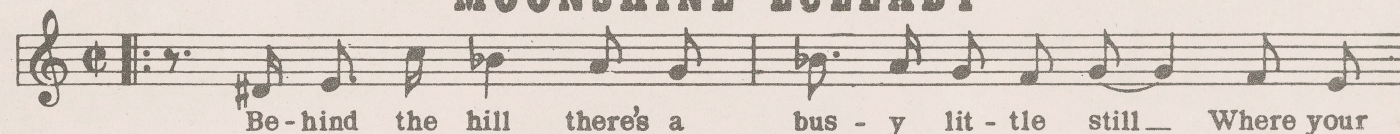
YOU CAN'T GET A MAN WITH A GUN



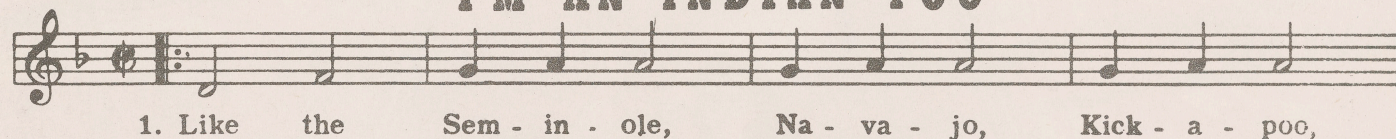
ANYTHING YOU CAN DO



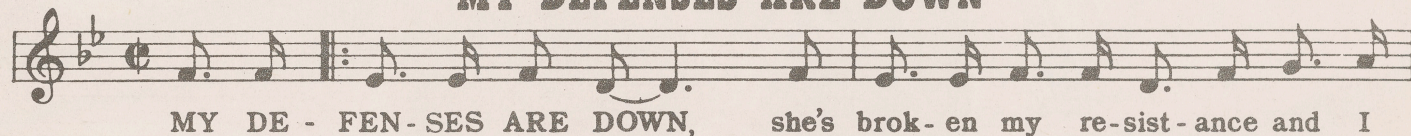
MOONSHINE LULLABY



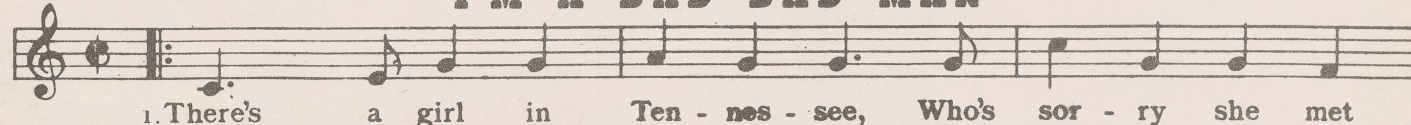
I'M AN INDIAN TOO



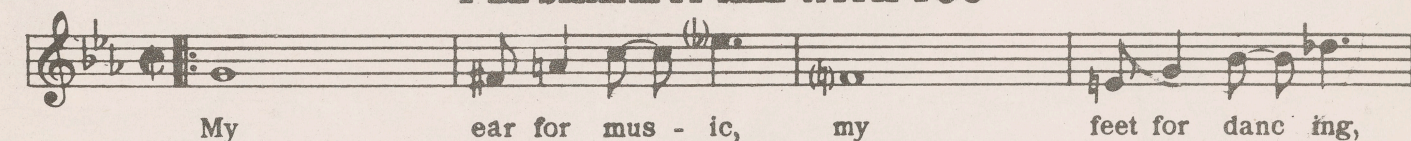
MY DEFENSES ARE DOWN



I'M A BAD BAD MAN



I'LL SHARE IT ALL WITH YOU



IRVING BERLIN
Music Corporation

1650 BROADWAY, NEW YORK 19, N. Y.

Who Do You Love I Hope

Words and Music by
IRVING BERLIN

Moderato ad lib.

Voice F7 Bb

Piano mp con la voce

Tommy: I've got the ques-tion, I've
Winnie: I heard your ques-tion, the

F7 Bb F7 Cm7 F7 Bb

had it for days, You've got the an-swer dear, —
an-swer you know, "Love" is my mid-dle name, —

G7 C G7 C Dm7 G7 Gm7 C7 C7aug-9

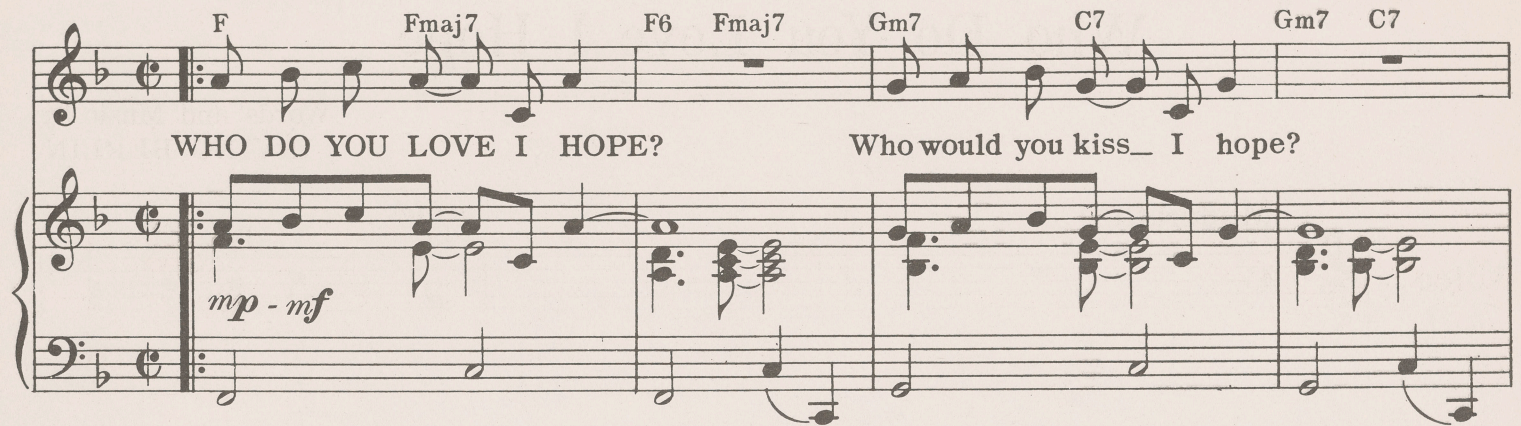
I'll put the ques-tion in one lit-tle phrase, say what I want to hear. —
You asked a ques-tion that wor-ried you so, — mind if I do the same. —

4
CHORUS *with a lift*

F Fmaj7 F6 Fmaj7 Gm7 C7 Gm7 C7

WHO DO YOU LOVE I HOPE? Who would you kiss_ I hope?

mp - mf



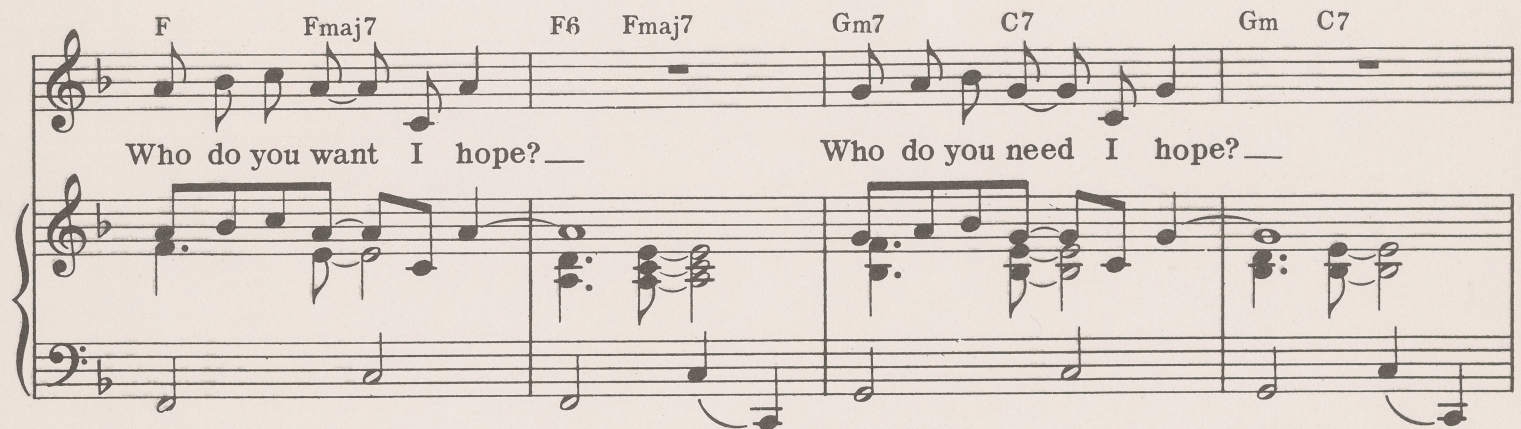
Gm7 C7 F7 Bb Bbm F C7 F Gm7 C7 aug-9

Who is it go - ing to be _____ I hope, I hope, I hope it's me. _



F Fmaj7 F6 Fmaj7 Gm7 C7 Gm C7

Who do you want I hope? _ Who do you need I hope? _



Gm7 C7 F7 Bb Bbm F C7 F Bbdim

Who is it go - ing to be? _____ I hope, I hope, I hope it's me. _



Cm7 F9 Bbmaj7 Bbm Am7 F

Winnie: Is it the bak-er who gave you a cake? I saw that look in his eye —
Is it the Blon-die who act-ed so shy? You seemed to think she was quaint—

Am Fdim C D9 Dm7 G7 C7

Is it the butch-er who brought you a steak? Say that it is and I'll die. —
Is it the Red-head who gave you the eye? Say that it is and I'll faint. —

F Fmaj7 F6 Fmaj7 Gm7 C7 Gm C7 Gm7 C7

WHO DO YOU LOVE I HOPE? Who would you kiss I hope? Who is it go-ing to

F7 Bb Bbm F C7 F 1. Cdim Gm7 C7aug-9 2. Gb7 F

be? — I hope, I hope, I hope it's me. —

Excerpts from the MUSICAL PRODUCTION...

ANNIE GET YOUR GUN

WORDS AND MUSIC by IRVING BERLIN

THEY SAY IT'S WONDERFUL

1. They say that fall-ing in love is won - der-ful — it's

I GOT THE SUN IN THE MORNING

I GOT THE SUN IN THE MORN-ING and the moon at night —

I GOT LOST IN HIS ARMS

I GOT LOST IN HIS ARMS and I had to stay — It was

WHO DO YOU LOVE I HOPE

WHO DO YOU LOVE I HOPE? Who would you kiss — I hope?

DOIN' WHAT COMES NATUR'LLY

1. Folks are dumb — Where I come from they ain't had an - y learn - in'