

MANHATTAN MADNESS

SAM H. HARRIS
presents

FACE THE MUSIC

A MUSICAL COMEDY REVUE

Lyrics and Music by
IRVING BERLIN

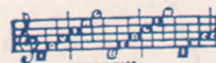


Book by
MOSS HART

Production staged by
HASSARD SHORT

Book directed by
GEORGE KAUFMAN

DANCES CREATED AND ARRANGED BY
ALBERTINA RASCH



Soft Lights and Sweet Music
Let's Have Another Cup O' Coffee
On A Roof In Manhattan
I Say It's Spinach
Manhattan Madness

Irving Berlin, Inc.
MUSIC PUBLISHERS
1607 Broadway New York

MADE IN
USA

MANHATTAN MADNESS

Tune Ukulele
A D F# B
Put Capo on 1st fret

By IRVING BERLIN

Moderato

Piano introduction in B-flat major, 4/4 time. The right hand (R.H.) features a melodic line with grace notes and slurs, while the left hand provides a steady bass accompaniment. The piece begins with a forte (*f*) dynamic and concludes with a final chord marked with an 8-measure rest.

VOICE

Ukulele chord diagram for Eb mi: 0 2 2 3

Vocal line: Man - hat - tan, Man - hat - tan, Man - hat - tan, Man - hat - tan,
Piano accompaniment: *p* (piano) accompaniment with chords in the right hand and bass notes in the left hand.

Vocal line: Man - hat - tan, Mad - ness You've got me at
Piano accompaniment: Includes chord diagrams for B7 and Bb7. The piano part features a melodic line in the right hand and bass notes in the left hand.

Vocal line: last, Im like a fly up - on a stee - ple, Watch - ing
Piano accompaniment: Includes chord diagrams for Eb, Eb dim, Bb7, and Eb dim. The piano part continues with a melodic line in the right hand and bass notes in the left hand.

Piano and Uke Arrangement
By HELMY KRESA

Bb7 *C7* *Gb7*

sev - en mil - lion peo - ple, Do a rhy - thm, *sva* that draws me

G7 *Ebmi*

with 'em. *sva* Man-hat - tan, Man-hat - tan, Man-hat - tan, Man-hat - tan,

p

B7 *Bb7*

Man - hat - tan Mad - ness, You're go - ing too

Eb *Eb dim* *Bb7* *Eb dim*

fast, I'm like a ba - by on a rock - er, Watch - ing

WARNING! Any one who copies the words or music of this song, or any portion thereof, will be criminally prosecuted therefore under section 28 of the United States Copyright Law, and section 441a of the New York Penal Law.

Fa - ther Knick - er - bock - er, Be - ing bus - y, — Im get - ting diz - zy. *sva...*

When sha - dows creep, In my bed I tum - ble, But nev - er sleep, For

Melody

I hear the rum - ble. In the street, the tramp - ing of feet, That

haunt me the whole night long. And through the day, I'm

watch - ing the dram - a, That peo - ple play, In your pan - o - ram - a.

Chord diagrams: Eb7, Eb aug

And I hear in tones ver - y clear, The sound of your rest - less song.

Chord diagrams: Ab, Ab mi, Eb, F7, Bb7

Sub - ways be - low and trains — a - bove rac - ing, Packed with hu - man - i - ty, —
New - sies that shout sen - sa - tion - al head - lines, Ped - dlers with things to sell, —

Chord diagrams: Bb, Ab, Bb dim, Bb7, Eb

p-f

Tax - is and trucks and trol - ley cars chas - ing, Bus - y as they can be. —
Noi - sy caf - és and whis - per - ing bread - lines, Chil - dren that scream and yell. —

Chord diagrams: Bb7, Ab, Bb dim, Bb7, Eb, Eb7

Eb7

Db

Eb dim

Eb7

Steam-ing, ma-chines and riv - et - ers grat-ing,
Whist-les and bells and si - ren horns blow-ing,

Ab

Cmi

F7

Bb7

Mo-tors in-stead of men,
Pis-tols that crack and roar,

Build-ings go up with wreck-
Traf-fic that stops and goes—

1. B7

Bb7

Eb

- ing crews wait-ing,
with-out know-ing,

To tear them down a - gain. —

2. B7

Bb7

Eb mi

What's all the shoot - ings for. — Man - hat - tan, Man - hat - tan.

p

B7 Bb7

Man - hat - tan Mad - ness, You've got — me at

f

8

Eb Eb dim Bb7 Eb dim

last, I'm like a fly up - on a stee - ple, Watch - ing

Bb7 C7 Gb7 Bb7

sev - en mil - lion peo - ple do a rhy - thm, That draws me with 'em, And it's

8va *8va*

Eb dim Eb Open

mad. —————

R.H.

8