

AN ORANGE GROVE IN CALIFORNIA

SAM H. HARRIS *presents*

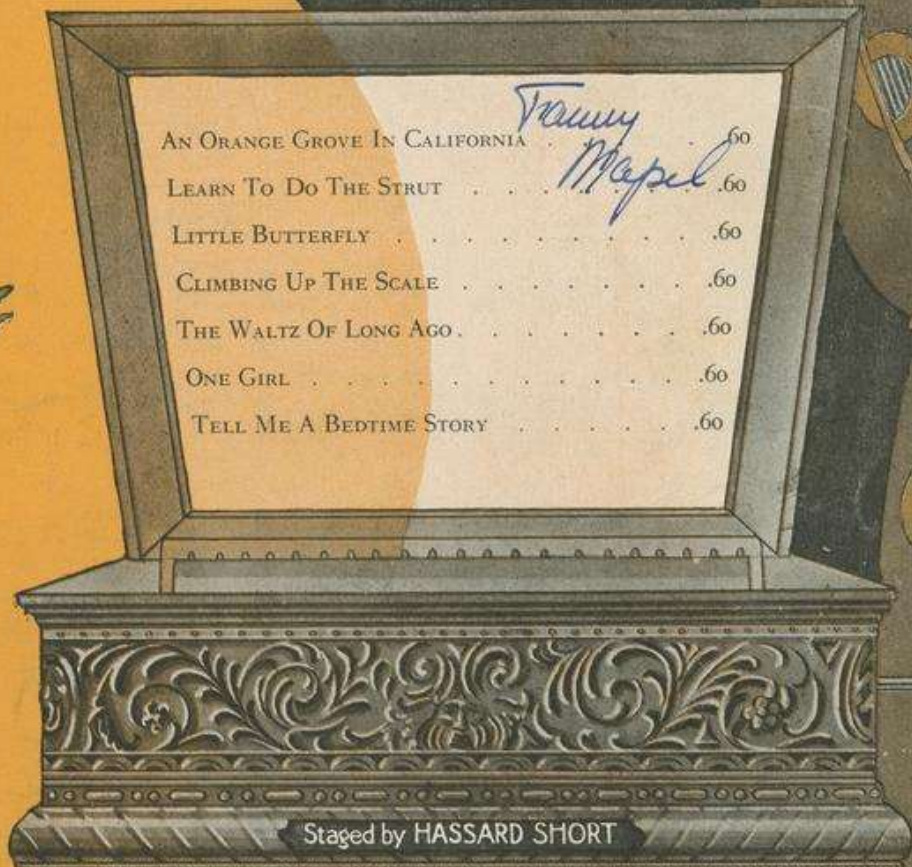
IRVING BERLIN'S

Third Annual

MUSIC BOX REVUE

1923-24

WORDS and MUSIC BY
IRVING BERLIN



AN ORANGE GROVE IN CALIFORNIA	<i>Fanny</i>	.60
LEARN TO DO THE STRUT	<i>Maple</i>	.60
LITTLE BUTTERFLY		.60
CLIMBING UP THE SCALE		.60
THE WALTZ OF LONG AGO		.60
ONE GIRL		.60
TELL ME A BEDTIME STORY		.60

R.S.

Vp-009840
1923
ORA

Irving Berlin Inc.
MUSIC PUBLISHERS
1607 Broadway New York

MADE IN USA

A REAL IRVING BERLIN JAZZ SONG

FROM
IRVING BERLIN'S
THIRD ANNUAL
MUSIC BOX REVUE

LEARN TO DO THE STRUT

CHORUS

But — you ought - a learn to do the strut — you'd bet - ter

pf

leave your house or hut — be - fore the danc - ing halls are shut — and you will

go right off your nut 'bout that new — step That eas - y to do step

fs

An Orange Grove In California

Words and Music by
IRVING BERLIN

Moderato

Piano introduction in B-flat major, 4/4 time. The piece begins with a forte (*f*) dynamic and a moderate tempo. The melody is characterized by a series of eighth-note chords in the right hand and a steady eighth-note bass line in the left hand. The piece concludes with a *rit.* (ritardando) marking.

VOICE

Vocal line and piano accompaniment for the first verse. The vocal line begins with a *Vamp* (mf) and features a melodic line with lyrics. The piano accompaniment provides harmonic support with chords and a bass line. Dynamics include *mf* and *p*.

I've a long-ing to go where the or-an-ges
What a beau-ti-ful day for a brid-al bo-

Vocal line and piano accompaniment for the second verse. The vocal line continues with lyrics. The piano accompaniment remains consistent with the first verse. Dynamics include *mf* and *p*.

grow ————— I know a co-zy nest — 'way out West —
quet ————— When or-ange blos-soms bloom — bride and groom —

Vocal line and piano accompaniment for the final line. The vocal line concludes with lyrics. The piano accompaniment provides harmonic support. Dynamics include *mf* and *p*.

And I miss it so Cal-i-for-nia my own ————— Oh how lone-ly I've
Hon-or and o-bey where the hea-vens are blue ————— All my dreams will come

grown ——— That's why I'm on the run — to the one — I left there all a - lone.
 true ——— I just re-ceived a note — and he wrote — I'm com-ing back to you.

CHORUS

Arm in arm we will rove thro' a sweet or - ange grove Far a -

way ——— in Cal - i - for - nia ——— Like a bird I

mean to fly West a - gain — And I'll hold her close to my

breast a-gain — When the blos - soms un - fold And the green turns to

gold some fine day — in Cal - i - for - nia — You'll see a

hap - py girl - ie and a hap - py fel - low — Mid the fields of yel - low

In an or - ange grove. grove.

L.H. rit



SONG GEMS

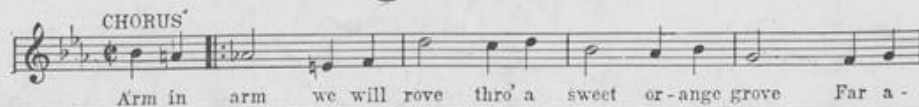
FROM

IRVING BERLIN'S

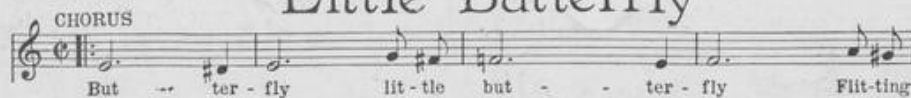
THIRD ANNUAL

MUSIC BOX REVUE

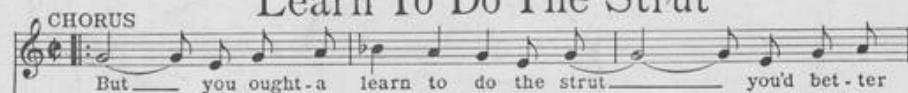
An Orange Grove In California



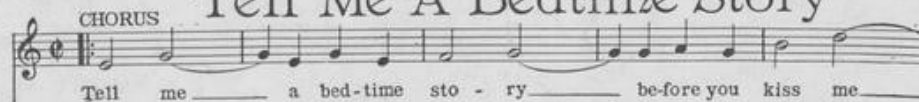
Little Butterfly



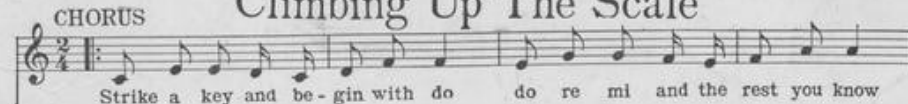
Learn To Do The Strut



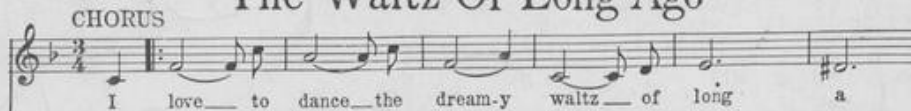
Tell Me A Bedtime Story



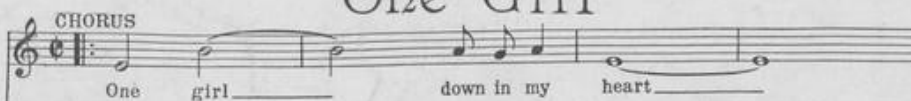
Climbing Up The Scale



The Waltz Of Long Ago



One Girl



Copyright MCMXXIII by IRVING BERLIN, Inc. 1507 B'way, N.Y.
International Copyright Secured All Rights Reserved

COPIES ON SALE WHEREVER MUSIC IS SOLD
These Numbers can also be had for your Phonograph and Player Piano