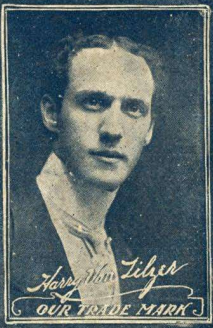


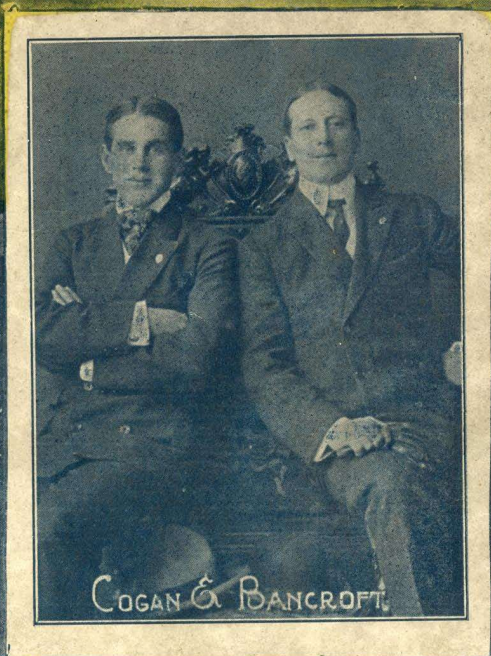
IN THE EVENING BY THE MOONLIGHT (DEAR LOUISE)



HARRY VON TILZER'S
LATEST
LOVE
BALLAD
HIT



WORDS BY
ANDREW
B.
STERLING



MUSIC BY
HARRY
VON
TILZER

MAINE MUSIC CO.
ROCKLAND.

HARRY VON TILZER
MAINE MUSIC CO. ROCKLAND, ME.

Etcherington

Try this over on your Piano.

Where the Morning Glories Twine Around the Door.

Words by
ANDREW STERLING.

Music by
HARRY VON TILZER.

Andante Moderato.



mf

The piano introduction consists of two staves. The right hand features a melodic line with eighth and sixteenth notes, while the left hand provides a steady accompaniment of eighth notes. The music is in a minor key and common time.



1. Down in New Eng-land, far, far a-way, Back to the home-stead on the
2. Down in New Eng-land, far, far a-way, Pic - ture a moth-er filled with

p

The first system of the vocal line includes two verses. The piano accompaniment continues with the same rhythmic pattern as the introduction, with the right hand playing chords and the left hand playing eighth notes.



hill; Oft in my fan-cy, fond - ly I stray,
joy, Greet - ing her lost one, just hear her say,

The second system of the vocal line continues the melody. The piano accompaniment remains consistent, providing a harmonic support for the vocal line.



Dream - ing a - lone when all is still.
Kiss me a - gain, I love my boy.

The final system of the vocal line concludes the piece. The piano accompaniment ends with a sustained chord in the right hand and a final note in the left hand.

Copyright MCMV by Harry Von Tilzer Music Pub. Co., 37 West 28th St., N.Y.
All Rights Reserved. Chicago Office, 67 Clark St., Oneonta Bld'g. English Copyright Secured.

Complete copies may be had where you bought this.

"In the Evening by the Moonlight, Dear Louise"

Words by
ANDREW B. STERLING.

Music by
HARRY VON TILZER.

Andante moderato.

The piano introduction consists of two staves. The right hand (RH) begins with a melody in the treble clef, marked *mf*. The left hand (LH) provides a harmonic accompaniment in the bass clef. The tempo is *Andante moderato*. The piece concludes with the instruction *poco a poco rall.*

The first system of the song features a vocal line and piano accompaniment. The vocal line is in the treble clef, and the piano accompaniment is in the bass clef. The lyrics are: "When the sum-mer day is dy-ing, dear Lou-ise, ——— And the Thro'the cot-ton fields we'll wan-der, dear Lou-ise, ——— Past the". The piano part includes markings for *L.H.*, *p*, and a double bar line with a repeat sign.

The second system of the song features a vocal line and piano accompaniment. The vocal line is in the treble clef, and the piano accompaniment is in the bass clef. The lyrics are: "moon is shin-ing far a-bove, ——— Then my old plan-ta-tion, hand in hand, ——— While the". The piano part continues with a similar accompaniment style.

heart for you is sigh-ing, dear Lou - ise, — For I long to see the face I
dark-ies o - ver yon - der, dear Lou ise, — Soft - ly sing sweet songs of Dix - ie -

love; — In the val - ley where the sweet mag - no - lia grows, — Where the
land; — I will whis - per once a - gain the sto - ry sweet, — How you'll

dear old swan-ee riv - er soft - ly flows, — Meet me when the night - in - gale sings in the
trem - ble when I kneel there at your feet, — I will take you in my arms be - neath the

trees, — In the ev - ning by the moon light, dear Lou - ise —
trees, — In the ev - ning by the moon light, dear Lou - ise —

In the Evening by the Moonlight

CHORUS.*Slowly.*

Dear Lou - ise, I'm wait - ing in the moon - light, Dear Lou -

p

ise, be - neath the same old trees; ——— Come to

me my heart is pin - ing, Meet me when the stars are shin - ing, In the

poco a poco rall. e dim.

ev - ning by the moon - light, dear Lou - ise. ———

poco a poco rall. e dim.