

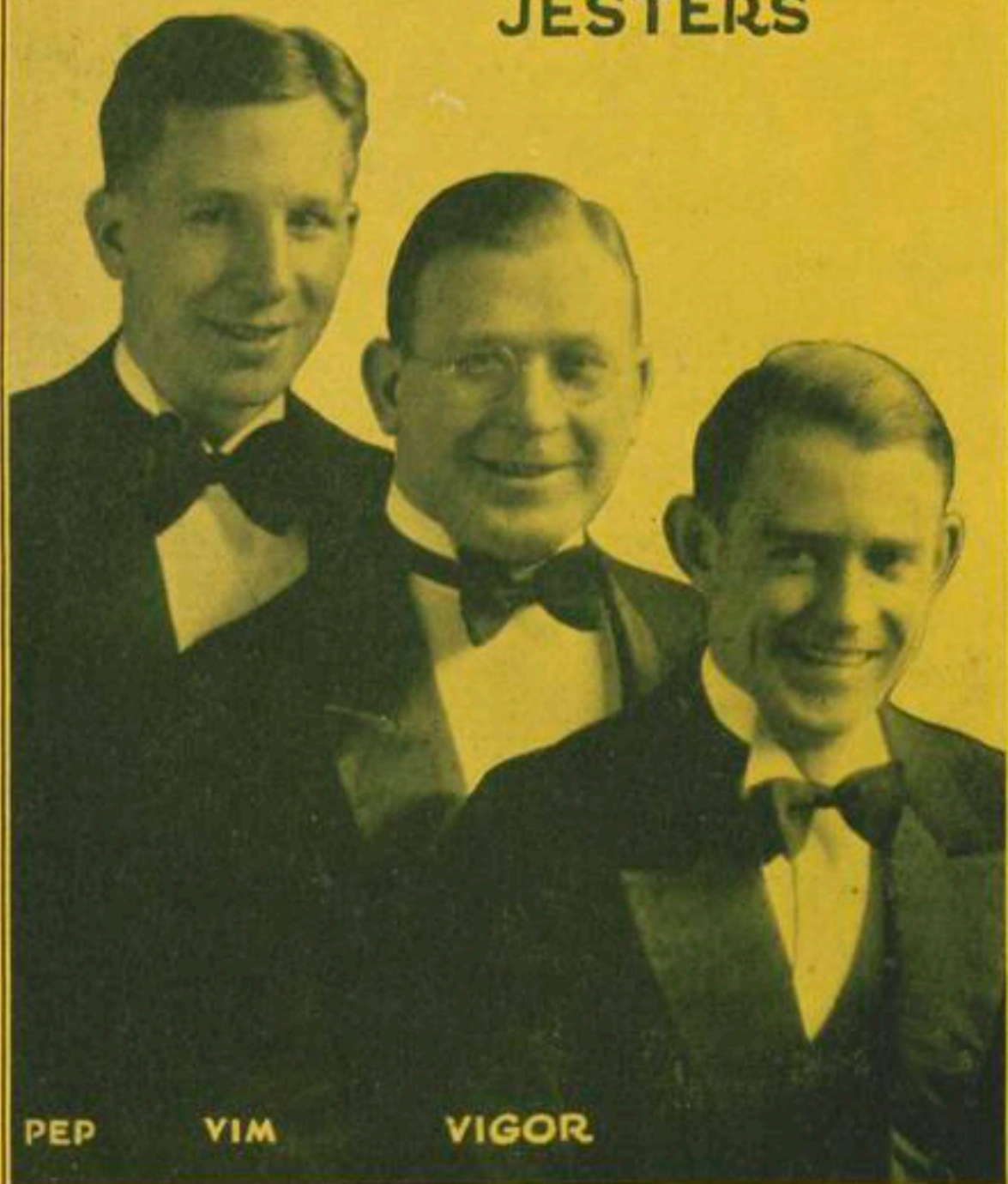
MG782  
155-2

# Dream A Little Dream Of Me

*Words by*  
**GUS KAHN**  
*Music by*  
**W. SCHWANDT**  
*and F. ANDREE*




*Featured by*  
**The TASTYEAST  
JESTERS**



D-C&E  
**'NU-STYLE'  
MULTI-PART  
EDITION**  
*Including*  
Solos or Duets for  
**SAXOPHONES**  
*(And Other E, B, C Instruments)*  
**TENOR BANJO**  
**HAWAIIAN GUITAR**  
*Accompaniments for*  
**BANJO and GUITAR**  
*(With Lettered Chords)*  
**and**  
**UKULELE**  
TRADE MARK  
**ALL-IN-ONE!**

**WILLIAMS PIANO CO.**  
SINCE 1887  
2150 MAIN AVE.

**POPULAR**  **EDITION**  
**DAVIS, COOTS & ENGEL, INC.**  
56 COOPER SQUARE + + + NEW YORK

**ORDER CODE**  
**"DREAM"**

# Dream A Little Dream Of Me

(Saxophone Parts\*)

(Play Large Notes for Solo—Small Notes for Duet)

**E♭ Alto Saxophone** (Also E♭ Baritone Sax., E♭ Clarinet or Alto Clarinet)

(Also Cello, Trombone or Baritone Solo, using Bass Clef signature and altered accidentals)

By  
GUS KAHN,  
W. SCHWANDT  
and  
F. ANDREE

Moderato

**B♭ Tenor Saxophone** (Also B♭ Soprano Sax., B♭ Trumpet, B♭ Clarinet or any "B♭" Instrument—Trombone in  $\text{C}$ )

Moderato

**C Melody Saxophone** (Also C Soprano—Violin, Flute or any "C" Instrument)

Moderato

\* Introduction omitted Copyright MCMXXXI by Davis, Coots & Engel, 56 Cooper Square, New York, U. S. A.

International Copyright Secured and Reserved PRINTED IN U. S. A.

CANADA: Radio Music Company, Limited, 193 Yonge St., Toronto

ENGLAND: Francis, Day & Hunter, Ltd., London FRANCE: Publication, Francis-Day, Paris

AUSTRALIA: Allan & Co., Prop., Melbourne GERMANY: Francis, Day & Hunter, G. m. b. H. Berlin

These arrangements copyright MCMXXXI by Davis, Coots & Engel, Inc. N. Y. C.

# Dream A Little Dream Of Me

Words by  
GUS KAHN

Tune Ukulele  
or Banjulele Banjo

A D F# B

Music by  
W. SCHWANDT  
and F. ANDREE

Moderato

The first system of piano accompaniment features a treble and bass clef. The treble clef has a key signature of one sharp (F#) and a common time signature. The music begins with a *mf* dynamic. The bass line consists of quarter notes and eighth notes, while the treble line features chords and eighth notes.

The second system continues the piano introduction. It includes two triplet markings over eighth notes in the treble clef. The bass line continues with a steady accompaniment.

VOICE  $A_{min}$   $alt.$

This system contains the first vocal line and piano accompaniment. The vocal line is on a single treble clef staff. The piano accompaniment is on a grand staff. A *Vamp* section is indicated with a double bar line. The lyrics are: "We meet at I stand and".

D-7  $D_{aug.}$  G D-7 aug. Dmin E7

This system contains the second vocal line and piano accompaniment. The vocal line is on a single treble clef staff. The piano accompaniment is on a grand staff. The lyrics are: "eve - ning time, say, 'Good - night' 'Tis sweet at eve - ning time, It's grand to say, 'Good - night?'".

Ukulele arr. by  
Roy Smeck "Wizard of the strings"

Copyright MCMXXXI by Davis, Coots & Engel, Inc., 56 Cooper Square, New York, U.S.A.  
International Copyright Secured and Reserved PRINTED IN U.S.A.  
CANADA: Radio Music Company, Limited, 193 Yonge St., Toronto  
ENGLAND: Francis, Day & Hunter Ltd., London. FRANCE: Publications, Francis-Day, Paris.  
AUSTRALIA: Allan & Co., Prop., Ltd., Melbourne. Germany: Francis, Day & Hunter, G. m. b. H. Berlin.

Amin alt. D7 G dim.

To know I'll spend an hour or two, Just with  
 Then stay and say it o'er and o'er, by your

D Emin D7 Amin alt. D-7 aug.

you. — Then when the hour grows late;  
 door. — The milk - man hur - ries by,

G D aug. Dmin E7 A7

I love to hes - i - tate — The mo - ments  
 But sweet-heart here am I — A - gain I

D7 A.7 D-7

seem so fleet - ing, While I am here re - peat - ing.  
 fond - ly hold you, Re - peat - ing all I've told you.

**CHORUS**

Stars shin-ing bright a - bove you, Night breez-es seem to whis-per, "I love you,"

Birds sing-ing in the syc - a - more tree, "Dream a lit - tle dream of Me,"

Say "night - ie - night" and kiss me, Just hold me tight and tell me you'll miss me;

While I'm a - lone and blue as can be, Dream a lit - tle dream of me, —

5

G Eb7 D7 G E7 Dmin E-7

Amin. Cmin. G A7 D7

G Eb7 D7 G E7 Dmin E-7

Amin. Cmin. G Cmin-7 D7 G Amin. G Bb7

E7 Cmin Bb7 Eb Cmin Bb7 Dim Bb7

Stars fad-ing, but I lin-ger on, dear, Still crav-ing your kiss;

Eb Cmin Bb7 Eb D7

I'm long-ing to lin-ger till dawn, dear, Just say-ing this:

G Bmin. Eb7 D7 G E7 Dmin E-7

Sweet dreams till sun-beams find you, Sweet dreams that leave all wor-ries be-hind you,

Amin. Cmin. G Cmin7 D7 1.G Eb7 D7 2.G

But in your dreams what-ev-er they be, Dream a lit-tle dream of me. me. —

# Dream A Little Dream Of Me

By GUS KAHN  
W. SCHWANDT  
and F. ANDREE  
Arr. by Roy Smeck  
"Wizard of the Strings"

## Tenor Banjo Solo

Mod<sup>to</sup>

**VERSE**

**CHORUS**

Chords: C, C min, D, Daug, G Daug, D min, E-7, C, C min, D-7, G, dim, D, D-7, C, C min, D, Daug, G Daug, D min, E-7, A-7, D-7, A-7, D-7, A-7, D-7, G, E-7, D min, E-7, A min, alt, C, A-7, Eb-7, D-7, G, E-7, D min, E-7, A min, alt, G, C min, D-7, A min, G, Bb-7, Eb, D-7, Eb, dim, Bb-7, Eb, D-7, G, A min, D, Eb, D-7, G, E-7, D min, E-7, A min, alt, G, C min, D-7, G, Eb-7, D-7, G, C min, D-7, G, Eb-7, D-7, G

## Hawaiian (Steel) Guitar Solo A Major Tuning E A E A C# E

Mod<sup>to</sup>

**VERSE**

**CHORUS**

Number in circle ○ indicates which string to pick  
Number above note indicates which fret to put Steel Bar on [ indicates Steel Bar across strings

Number in circle ○ indicates which string to pick

Number above note indicates which fret to put Steel Bar on [ indicates Steel Bar across strings

Copyright MCMXXXI by Davis, Coots & Engel, Inc., 56 Cooper Square, New York, U.S.A.

International Copyright Secured and Reserved PRINTED IN U.S.A.

Dream A Little etc.

CANADA: Radio Music Company, Limited, 193 Yonge St., Toronto

ENGLAND: Francis Day & Hunter, Ltd., London FRANCE: Publication, Francis-Day, Paris

AUSTRALIA: Allan & Co., Prop., Ltd., Melbourne

GERMANY: Francis, Day & Hunter, G.m.b.H. Berlin

*The Season's Outstanding Song Hit-*

# ONE LITTLE RAINDROP

By  
HARRY RICHMAN,  
JACK MESKILL  
and  
JEAN SCHWARTZ

CHORUS *a tempo*

One lit-tle rain-drop does-n't mean a show - er,

*a tempo*  
*p-mf*

One lit-tle dark cloud does-n't mean a storm, \_\_\_\_\_ If

troub - le comes to you, Don't wor - ry, don't be blue, the

Copyright MCMXXX by Davis, Coots & Engel, Inc., 56 Cooper Square, New York  
International Copyright Secured      MADE IN U. S. A.      All Rights Reserved

COPIES ON SALE WHEREVER MUSIC IS SOLD  
This Number can also be had for your Phonograph and Player Piano