

THAT'S YOU, BABY

FOX MOVIE-TONE FOLLIES

WORDS AND MUSIC BY
CON CONRAD
SIDNEY D. MITCHELL
AND
ARCHIE GOTTLER



WALKING WITH SUSIE
THAT'S YOU, BABY
BREAKAWAY
BIG CITY BLUES
PEARL OF OLD JAPAN
WHY CAN'T I BE LIKE YOU

ENSEMBLES BY
EDWARD ROYCE & ARCHIE GOTTLER
STORY AND DIRECTION BY
DAVID BUTLER
DIALOGUE BY
WILLIAM K. WELLS
REVUE DIRECTED BY
MARCEL SILVER

DE SYLVA, BROWN AND HENDERSON, INC.
Music Publishers
DE SYLVA, BROWN AND HENDERSON BUILDING 745 SEVENTH AVENUE NEW YORK

That's You, Baby

From Fox Movietone Follies of 1929

Tune Ukulele
A D F# B
Put Capo on 1st Fret

By CON CONRAD,
SIDNEY D. MITCHELL
and ARCHIE GOTTLER

Piano

f

The first system of piano accompaniment, featuring a treble and bass clef. The treble clef has a forte (*f*) dynamic marking. The music includes a triplet of eighth notes in the treble and a steady bass line.

The second system of piano accompaniment, continuing the melody and bass line from the first system.

Verse

Boy: I've heard it in - ti - ma - ted If you were syn - di - ca - ted
 Girl: The things you've cal - cu - la - ted Are not so com - pli - ca - ted

p

The verse section includes two lines of lyrics with a boy's and a girl's perspective. Above the lyrics are two ukulele chord diagrams. Below the lyrics is the piano accompaniment, marked with a piano (*p*) dynamic.

You'd be ap - pre - ci - a - ted more Ba - by
 For I've been ed - u - ca - ted too Ba - by

The second part of the verse includes two lines of lyrics and the corresponding piano accompaniment.

Uke Arr. by Joseph M. Weiss

But this is my re - ac - tion Ad - di - tion and sub - trac - tion
On prob - lems math - e - ma - tic I al - so am fan - a - tic

Have prov - en to a frac - tion why I love you,
I'll make it quite em - pha - tic why I love you.

Chorus

Boy: Take a lit - tle hon - ey Add a smile so
Girl: Take a cer - tain par - ty Add a bit of
Boy: Take a su - gar cook - ie Add some snook - ie

sun - ny Who's the lit - tle Hon - ey? That's
smar - ty Who's the cer - tain Par - ty? That's
ook - ie Who's the su - gar Cook - ie? That's

You Ba - by. Take a blush-ing Ros - ie
 You Ba - by. Take a lit - tle Dev - il
 You Ba - by. *Girl:* Take a great big Pa - pa

Add the cut - est nos - ie Who's the lit - tle
 Add some on - the - lev - el Who's the Hand - some
 Loves his lit - tle Ma - ma Who's the great big

Ros - ie? That's You Ba - by. You are per -
 Dev - il? That's You Ba - by. Oh what a
 Pa - pa? That's You Ba - by. *Boy:* If oo is

fec - tion to a "T" Af - ter in -
 per - son - al - i - ty Af - ter re -
 bad girl I call down *Girl:* Pd be a

-spec - tion I can see, you for me.
 -hears - in' On your knee, you for me.
 sad girl I faw down, I faw down.

Take a bash - ful Ba - by Add a lit - tle
 Take the one that I love Add a lot of
 Boy: Take a poo - dgy woo - dgy Girl: Add some could she

"May - be" Who's the lit - tle Ba - by? That's
 my love Who's the one that I love? That's
 could she Both: Who's the poo - dgy woo - dgy? That's

1 you. you. 2 you. you. you.

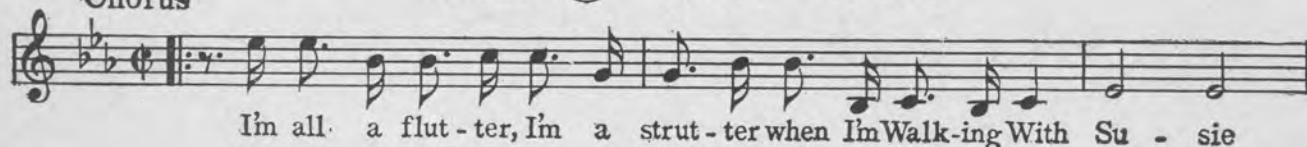


OUTSTANDING SONG HITS
From
**FOX MOVIE TONE FOLLIES
OF 1929**

By **CON CONRAD, SIDNEY D. MITCHELL** and **ARCHIE GOTTLER**

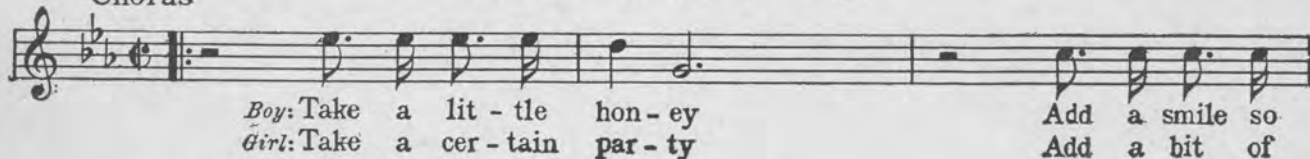
Walking With Susie

Chorus



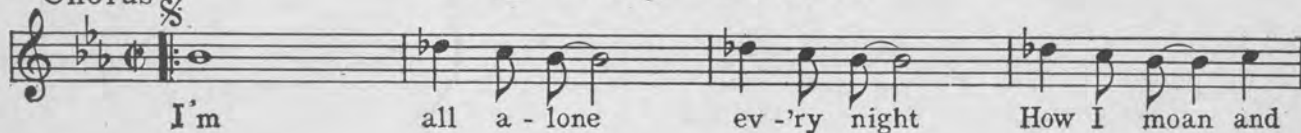
That's You, Baby

Chorus



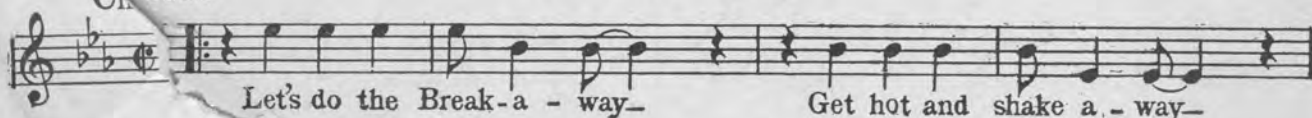
Big City Blues

Chorus



Breakaway

Chorus



Copyright 1929 by De Sylva, Brown and Henderson Inc. 745 Seventh Ave., N.Y.C.

COPIES ON SALE WHEREVER MUSIC IS SOLD
THESE NUMBERS CAN ALSO BE HAD FOR YOUR PHONOGRAPH AND PLAYER PIANO

DE SYLVA, BROWN AND HENDERSON, INC.
Music Publishers
DE SYLVA, BROWN AND HENDERSON BUILDING 745 SEVENTH AVENUE NEW YORK