

TELL ME A BEDTIME STORY

SAM H. HARRIS *presents*

IRVING BERLIN'S

*Third Annual*

# MUSIC BOX REVUE

1923-24

WORDS and MUSIC BY  
IRVING BERLIN



AN ORANGE GROVE IN CALIFORNIA . . . . .	.60
LEARN TO DO THE STRUT . . . . .	.60
LITTLE BUTTERFLY . . . . .	.60
CLIMBING UP THE SCALES . . . . .	.60
THE WALTZ OF LONG AGO . . . . .	.60
ONE GIRL . . . . .	.60
TELL ME A BEDTIME STORY . . . . .	.60

Staged by HASSARD SHORT

R.S.

Irving Berlin, Inc.  
MUSIC PUBLISHERS  
1607 Broadway New York

MADE  
IN  
USA

# A REAL IRVING BERLIN JAZZ SONG

FROM  
IRVING BERLIN'S  
THIRD ANNUAL  
MUSIC BOX REVUE

## LEARN TO DO THE STRUT

### CHORUS

But — you ought - a learn to do the strut ——— you'd bet - ter

*pf*

leave your house or hut ——— be-fore the danc-ing halls are shut ——— and you will

go right off your nut 'bout that new — step That eas - y to do step

*fs*

Copyright MCMXXXIII by IRVING BERLIN Inc. 1607 Broadway New York  
International Copyright Secured All Rights Reserved

# Tell Me A Bedtime Story

Words and Music  
By IRVING BERLIN

Moderato

First system of piano accompaniment. Treble clef, key signature of one flat (B-flat major/D minor), 2/4 time. Starts with a forte (*f*) dynamic. The melody is in the right hand, and the bass line is in the left hand.

VOICE

Pret-ty lit-tle Flo

Second system of piano accompaniment. Treble clef, key signature of one flat, 2/4 time. Dynamics include *fz*, *mf*, and *p*. The piano part continues with chords and a moving bass line.

sit-ting with her beau In the par-lor list-'ning to a ra-di-

Third system of piano accompaniment. Treble clef, key signature of one flat, 2/4 time. Dynamics include *fz*, *mf*, and *p*. The piano part continues with chords and a moving bass line.

o Twelve o'clock is strik-ing and there's no more ra-di-o

Fourth system of piano accompaniment. Treble clef, key signature of one flat, 2/4 time. Dynamics include *fz*, *mf*, and *p*. The piano part continues with chords and a moving bass line.

Copyright MCMXXIII by IRVING BERLIN, Inc. 1607 Bway, N.Y.  
International Copyright Secured All Rights Reserved

Ten - der - ly the maid - en whis - pers Dear be - fore you go

CHORUS

Tell me — a bed - time sto - ry — be - fore you kiss me —

— good - night — Be - fore you go a - way — I'd like to

hear you say — That your love is ev - er last - ing Please be - gin broad -

cast - ing and may - be — your tir - ed ba - by — will go and

turn down the light — be - fore I

climb the stairs — And say my eve - ning prayers — Won't you

tell me a bed - time sto - - ry. — - ry. —

STANDARDS OF THE WORLD

"STERLING" ON SILVER  
"IRVING BERLIN" ON SONGS

# SONG GEMS

FROM  
IRVING BERLIN'S  
THIRD ANNUAL  
MUSIC BOX REVUE

## An Orange Grove In California

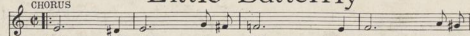
CHORUS



Arm in arm we will rove thro' a sweet or-ange grove Far a-

## Little Butterfly

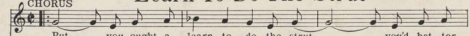
CHORUS



But -- ter - fly lit - tle but - - ter - fly Flit - ting

## Learn To Do The Strut

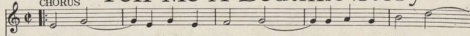
CHORUS



But \_\_\_ you ought - a learn to do the strut \_\_\_ you'd bet - ter

## Tell Me A Bedtime Story

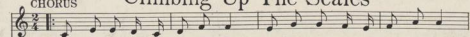
CHORUS



Tell me \_\_\_ a bed - time sto - ry \_\_\_ be - fore you kiss me \_\_\_

## Climbing Up The Scales

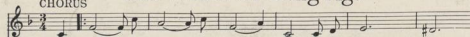
CHORUS



Strike a key and be - gin with do do re mi and the rest you know

## The Waltz Of Long Ago

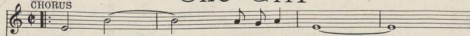
CHORUS



I love \_\_\_ to dance \_\_\_ the dream - y waltz \_\_\_ of long a

## One Girl

CHORUS



One girl \_\_\_ down in my heart \_\_\_

Copyright MCMXXIII by IRVING BERLIN, Inc. 1607 B'way, N.Y.  
International Copyright Secured All Rights Reserved

COPIES ON SALE WHEREVER MUSIC IS SOLD