

ROCKABYE BABY

BS151
53-2

SAM H. HARRIS *presents*
IRVING BERLIN'S FOURTH ANNUAL
MUSIC BOX REVUE
1925

Words & Music
by
IRVING BERLIN



- Tell Her in the Springtime
- Listening
- In the Shade of a Sheltering Tree
- Where Is My Little Old New York?
- Don't Send Me Back to Petrograd
- Unlucky in Love
- The Call of the South
- Rockabye Baby
- Who
- Tokio Blues

Staged by
JOHN MURRAY ANDERSON

Irving Berlin, Inc.
MUSIC PUBLISHERS
1607 Broadway New York



IRVING BERLIN'S SUCCESS
 IN
1925 - THE FOURTH ANNUAL - 1925
MUSIC BOX REVUE
LISTENING

By IRVING BERLIN

CHORUS

Lis - ten - ing, Lis - ten - ing for you — All a - lone

feel - ing kind o' blue — Lis - ten - ing — For a

knock up - on the door — Grow - ing wea - ry wait - ing for — your re -

Copyright MCMXXIV by IRVING BERLIN Inc. 1607 Bway N.Y.
 International Copyright Secured Made In U.S.A. All Rights Reserved

COPIES ON SALE WHEREVER MUSIC IS SOLD
This Number can also be had for your Phonograph and Player Piano

Rockabye Baby

By IRVING BERLIN

Moderato

f

The piano introduction consists of two staves. The right hand starts with a treble clef and a key signature of one sharp (F#). It begins with a series of eighth notes, followed by a series of chords. The left hand starts with a bass clef and a key signature of one sharp (F#). It begins with a series of chords, followed by a series of eighth notes.

VOICE

Lit - tle ba - by, can't you hear the call, of the Sand - man, while the

p

The vocal line is written on a single staff with a treble clef. The piano accompaniment consists of two staves. The right hand starts with a treble clef and a key signature of one sharp (F#). It begins with a series of chords. The left hand starts with a bass clef and a key signature of one sharp (F#). It begins with a series of chords.

shad-ows fall, Let him lead you by the hand. In-to drows-y slum - ber -

The vocal line is written on a single staff with a treble clef. The piano accompaniment consists of two staves. The right hand starts with a treble clef and a key signature of one sharp (F#). It begins with a series of chords. The left hand starts with a bass clef and a key signature of one sharp (F#). It begins with a series of chords.

land, — Soon the morn-ing, will be on its way, To my ba - by, with a

The vocal line is written on a single staff with a treble clef. The piano accompaniment consists of two staves. The right hand starts with a treble clef and a key signature of one sharp (F#). It begins with a series of chords. The left hand starts with a bass clef and a key signature of one sharp (F#). It begins with a series of chords.

brand new day, Go to sleep, my dear, while I, — Sing a ten-der lull-a-by.

CHORUS

Rock-a-bye Ba-by, — Hush a-bye dear. — Slum-ber my

p-f

sweet-heart, — Moth-er is near. — Dream-ing of ba-by, —

— All of the night, — Plan-ning a fu-ture, — Ros-y and

bright. _____ Dol-lies and school-books, _____ Wait-ing for you. _____

_____ Beau-ti-ful dress-es. _____ Wed-ding bells too, _____ Plen-ty of

sun-shine, _____ Crown-ing each year, _____ Rock-a-bye ba-by, _____

_____ Hush-a-bye dear. _____ Rock a-bye dear. _____



SONG GEMS

FROM

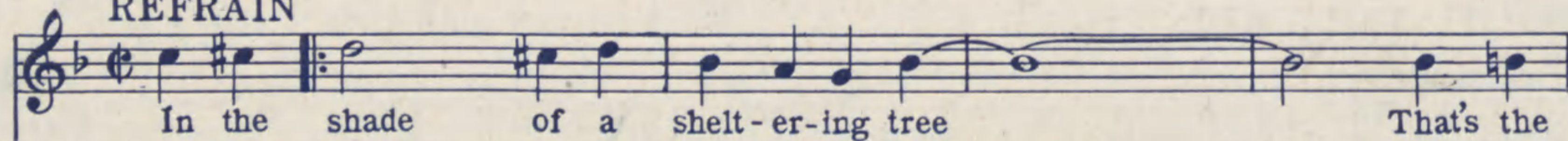
IRVING BERLIN'S

FOURTH ANNUAL 1925

MUSIC BOX REVUE

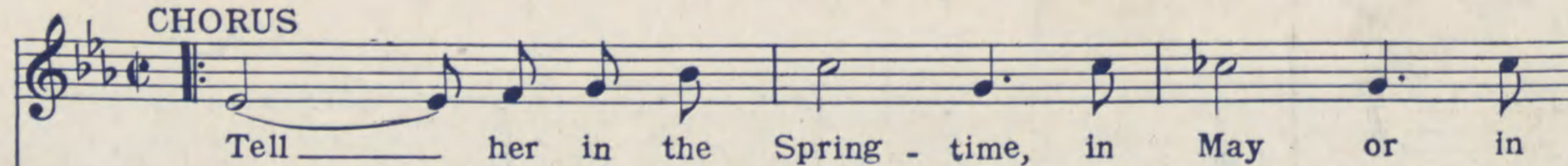
In The Shade Of A Sheltering Tree

REFRAIN



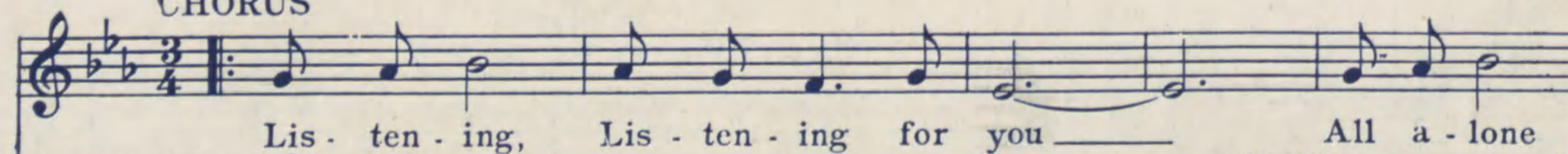
Tell Her In The Springtime

CHORUS



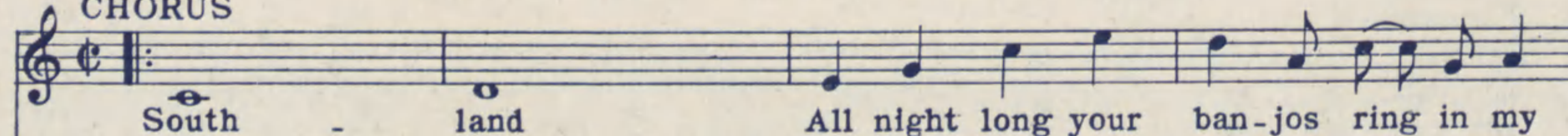
LISTENING

CHORUS



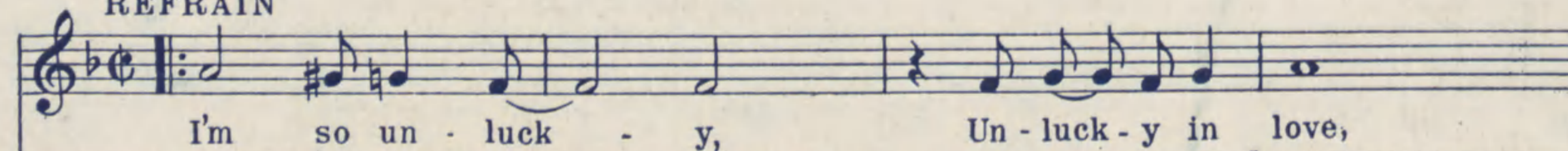
The Call of The South

CHORUS



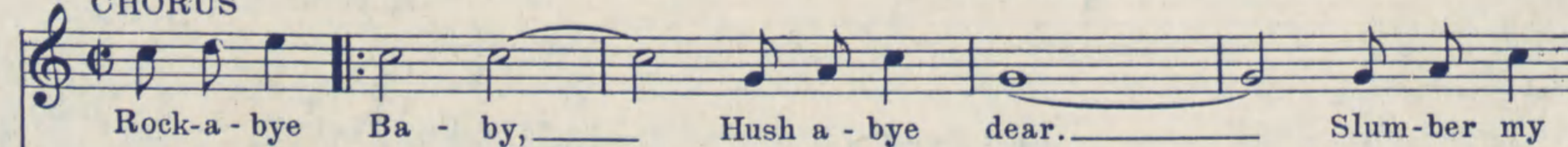
UNLUCKY IN LOVE

REFRAIN



Rockabye Baby

CHORUS



Copyright MCMXXIV by IRVING BERLIN Inc. 1607 Broadway, N.Y.C.
International Copyright Secured Made in U.S.A. All Rights Reserved

COPIES ON SALE WHEREVER MUSIC IS SOLD
These Numbers can also be had for your Phonograph and Player Piano