

# PARIS WAKES UP AND SMILES

\$1.00



IRVING BERLIN • ROBERT E. SHERWOOD • MOSS HART present

A NEW MUSICAL COMEDY

# Miss Liberty

LYRICS & MUSIC BY  
**IRVING BERLIN**

BOOK BY  
**ROBERT E. SHERWOOD • MOSS HART**  
DANCES & MUSICAL NUMBERS STAGED BY  
**JEROME ROBBINS**

DIRECTED BY  
**MOSS HART**

SETTINGS BY OLIVER SMITH COSTUMES BY MOTLEY

(Just One Way To Say) I LOVE YOU • LITTLE FISH IN A BIG POND • HOMEWORK • PARIS WAKES UP AND SMILES • LET'S TAKE AN OLD-FASHIONED WALK • THE POLICEMEN'S BALL • GIVE ME YOUR TIRED, YOUR POOR • ONLY FOR AMERICANS THE HON'RABLE PROFESSION OF THE FOURTH ESTATE • THE MOST EXPENSIVE STATUE IN THE WORLD • WHAT DO I HAVE TO DO TO GET MY PICTURE IN THE PAPER • EXTRA! EXTRA! • YOU CAN HAVE HIM • MISS LIBERTY • MR. MONOTONY

**IRVING BERLIN**  
MUSIC CORPORATION  
1650 BROADWAY, NEW YORK 19, N. Y.

"Miss Liberty"  
2

# Paris Wakes Up And Smiles



Words and Music by  
IRVING BERLIN

Slowly

Piano *mf*

The piano introduction is written in 3/4 time with a key signature of one flat (Bb). It consists of two staves: a treble clef staff and a bass clef staff. The melody in the treble staff begins with a quarter note G4, followed by quarter notes A4 and Bb4, then a half note C5. The bass staff provides harmonic support with chords and single notes.

## CHORUS

Slowly with expression

C7 F Bb Fmaj7 F7 Bb F

When the sun goes down Par - is wakes up

*mp-mf*

The first system of the chorus features a vocal line and a piano accompaniment. The vocal line starts with a quarter note G4, followed by quarter notes A4 and Bb4, then a half note C5. The piano accompaniment consists of two staves. The treble staff has chords and single notes, while the bass staff has a steady bass line.

Am C9 Gm7 C7b9 F Gm7 C7

Fills up her cup and smiles When the

The second system continues the chorus. The vocal line has a quarter note G4, followed by quarter notes A4 and Bb4, then a half note C5. The piano accompaniment continues with chords and single notes.

F Bb Fmaj7 F7 Bb F Am C9

lights are low Par - is is high Lights up the

The third system concludes the chorus. The vocal line has a quarter note G4, followed by quarter notes A4 and Bb4, then a half note C5. The piano accompaniment continues with chords and single notes.

Gm7 C7b9 F Gm7 F Am

sky for miles. When they stop play - ing

Am7 D9 C

shop on the Rue de la Paix. Count their stock and they

*(Pay)*

G7 C7 C9 C7b9 C7 F Bb Fmaj7 F7

lock up their styles. When the bu - sy town

Bb F Am C9 Gm7 C7b9

goes home to sup PAR - IS WAKES UP AND

1. F Abdim Gm7 C7 2. F Eb F

SMILES. When the SMILES.

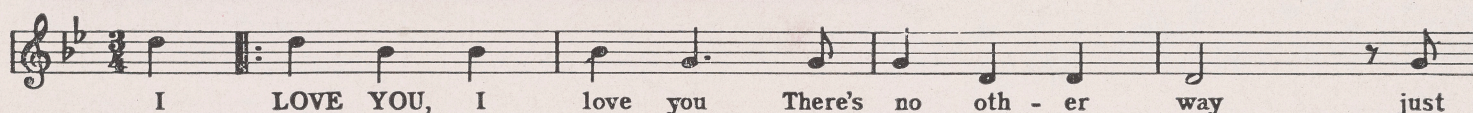


# Excerpts FROM THE MUSICAL PRODUCTION

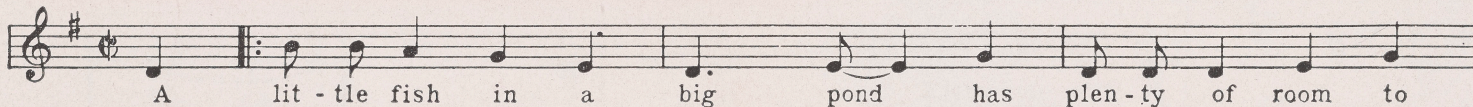
# Miss Liberty

LYRICS & MUSIC BY **IRVING BERLIN**

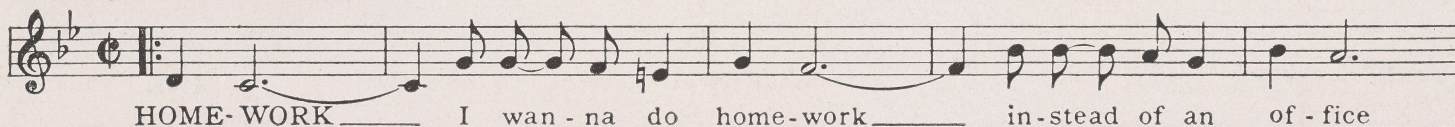
## Just One Way To Say I Love You



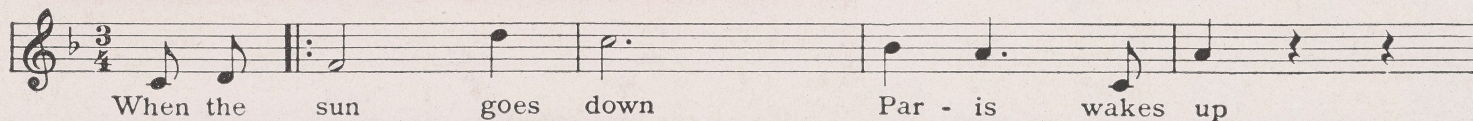
## Little Fish in a Big Pond



## Homework



## Paris Wakes Up And Smiles



## The Policemen's Ball

