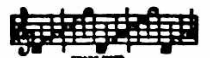


IRVING BERLIN'S TOGETHER, WE TWO



Irving Berlin, Inc.
MUSIC PUBLISHERS
1607 Broadway New York



CODE WORD
'TOGETHER'

Together, We Two

Tune Ukulele
or Banjulele Banjo

By IRVING BERLIN

G C E A

Moderato

First system of piano introduction. Treble clef, C major key signature, 2/4 time signature. Starts with a forte (*f*) dynamic. The bass line features a simple harmonic accompaniment.

Second system of piano introduction. Continues the harmonic accompaniment from the first system, ending with a repeat sign.

Third system. Includes a vocal line starting with the lyrics "Hap - pi - ness". The piano accompaniment is marked *p* (piano) and includes a "Vamp" section. A guitar chord diagram is shown above the vocal line.

Fourth system. Continues the piano accompaniment and the vocal line with lyrics "hap - pi - ness all the day long". Includes guitar chord diagrams above the vocal line.

Ukulele Arr. by
MAY SINGHI BREEN

Copyright 1927 by IRVING BERLIN, Inc. 1607 B'way, N.Y.
International Copyright Secured All Rights Reserved

Ev - ry - thing's ro - sy and my heart keeps sing - ing a

song — Nev - er - more trou - bles or

nev - er - more strife And I keep

think - ing of the hap - pi - est day — of my life

4 CHORUS

Bells were toll - ing as we were stroll - ing to - geth - er

p-f

This system contains the first two lines of music. The top line is the vocal melody, and the bottom two lines are the piano accompaniment. The piano part begins with a dynamic marking of *p-f*. Chord diagrams are placed above the vocal line at the beginning and end of phrases.

I was tell - ing where we'd be dwell - ing to - geth - er

This system contains the next two lines of music, following the same format as the first system with vocal and piano parts.

Down at the bot - tom of a lit - tle hill

This system contains the next two lines of music, continuing the vocal and piano accompaniment.

Where we could live and love and hear the trill of a whip - poor - will

This system contains the final two lines of music on the page, concluding the chorus with the vocal and piano parts.

We were hap - py we looked so snap - py to - geth - er

No mis - tak - ing what we were ach - ing to do You gave your

love un-di-vid-ed Just as I did then and there we both de-cid-ed Ev'ry weath-er we'd

share to - geth - er, we two two