

IN THE SHADE OF A SHELTERING TREE

B5151
97
C.I.

SAM H. HARRIS *presents*
IRVING BERLIN'S FOURTH ANNUAL

MUSIC BOX REVUE

1925

Words & Music
by
IRVING BERLIN



Tell Her in the Springtime
Listening
In the Shade of a Sheltering
Tree
Where Is My Little Old
New York?
Don't Send Me Back to
Petrograd
Unlucky in Love
The Call of the South
Rockabye Baby
Who
Tokio Blues

Staged by
JOHN MURRAY ANDERSON

Irving Berlin, Inc.
MUSIC PUBLISHERS
1607 Broadway New York





IRVING BERLIN'S SUCCESS

IN

1925 - THE FOURTH ANNUAL - 1925

MUSIC BOX REVUE

TELL HER IN THE SPRINGTIME

CHORUS

By IRVING BERLIN

Tell _____ her in the Spring - time, in May or in

Melody marcato

June. Tell _____ her in the Spring - time, the best time to

spoon, When ev - ry - thing be - gins

Copyright MCMXXIV by IRVING BERLIN Inc. 1607 Bway N.Y.
 International Copyright Secured Made In U.S.A. All Rights Reserved

COPIES ON SALE WHEREVER MUSIC IS SOLD
 This Number can also be had for your Phonograph and Player Piano

In The Shade Of A Sheltering Tree

By IRVING BERLIN

Moderato

Musical notation for the piano introduction, consisting of two staves (treble and bass clef) in a 2/4 time signature. The melody is in the right hand, starting with a quarter rest followed by a quarter note G4, then a half note chord of F#4 and G4, and continues with various chords and melodic lines. The bass line provides harmonic support with chords and single notes.

VOICE

Voice and piano accompaniment for the first line of lyrics. The voice line is on a single staff with lyrics: "Here and there a lov - ing pair will go and share a Mor - ris chair to". The piano accompaniment consists of two staves (treble and bass clef) with a dynamic marking of *p* (piano). The piano part features chords and melodic lines that support the vocal melody.

Voice and piano accompaniment for the second line of lyrics. The voice line continues with lyrics: "spoon Jack and Jill pre - ferred a hill and". The piano accompaniment continues with chords and melodic lines, maintaining the harmonic structure.

Voice and piano accompaniment for the third line of lyrics. The voice line concludes with lyrics: "there's a thrill Be - neath the sil - vry moon". The piano accompaniment provides the final harmonic support for this section.

But there's on - ly one place For a lov - er's em - brace

REFRAIN

In the shade of a shelt - er - ing tree That's the

place for a coup - le to be _____ You will find that they

al - ways a - gree _____ In the shade of a

shelt - er - ing tree — All the tales A - dam whis - pered to Eve —

Moth - er Eve simp - ly had to be - lieve — What was

hers was his The rea - son is they hap - pened to be — In the shade of a

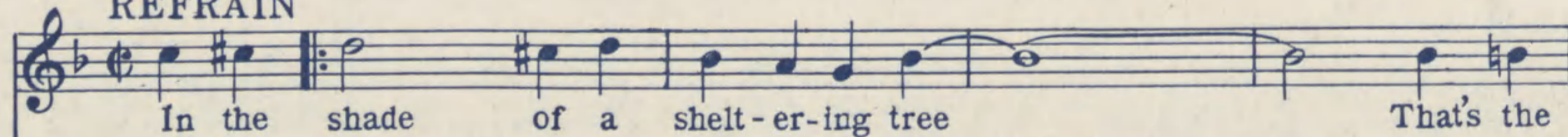
shelt - er - ing tree. In the tree.



SONG GEMS
 FROM
IRVING BERLIN'S
 FOURTH ANNUAL 1925
MUSIC BOX REVUE

In The Shade Of A Sheltering Tree

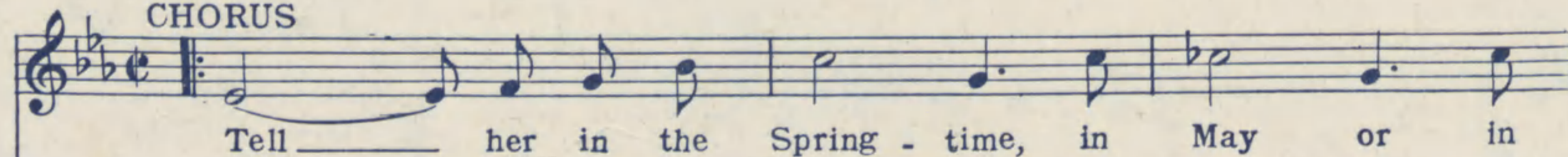
REFRAIN



In the shade of a shelt-er-ing tree That's the

Tell Her In The Springtime

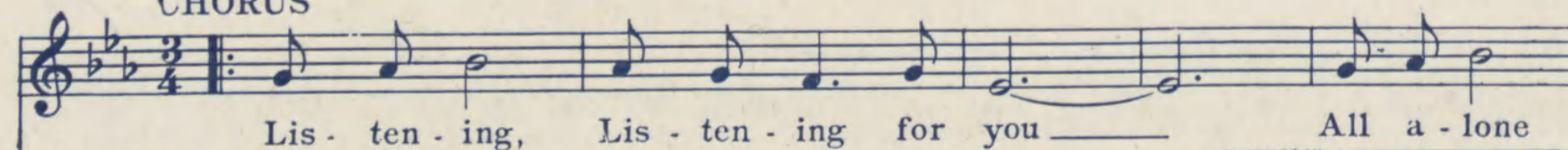
CHORUS



Tell her in the Spring-time, in May or in

LISTENING

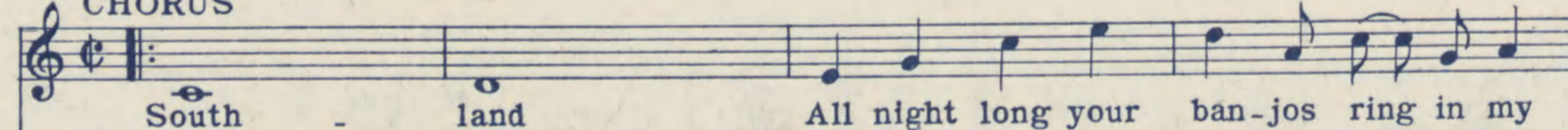
CHORUS



Lis-ten-ing, Lis-ten-ing for you All a-lone

The Call of The South

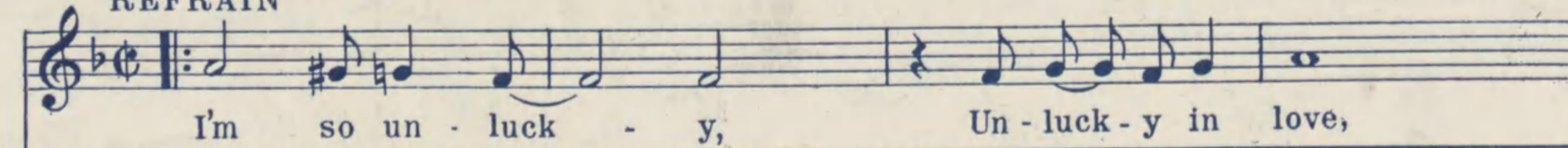
CHORUS



South land All night long your ban-jos ring in my

UNLUCKY IN LOVE

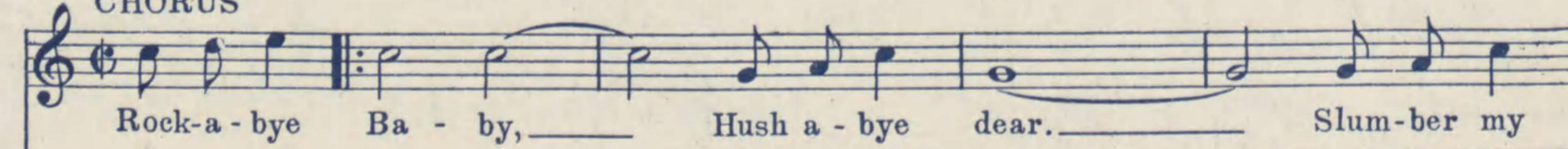
REFRAIN



I'm so un-luck-y, Un-luck-y in love,

Rockabye Baby

CHORUS



Rock-a-bye Ba-by, Hush a-bye dear. Slum-ber my

Copyright MCMXXIV by IRVING BERLIN Inc. 1607 Broadway, N.Y.C.
 International Copyright Secured Made in U.S.A. All Rights Reserved

COPIES ON SALE WHEREVER MUSIC IS SOLD
 These Numbers can also be had for your Phonograph and Player Piano