

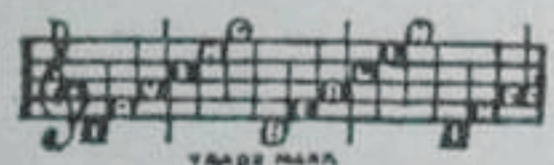
IRVING BERLIN'S

BS151
362

I NEVER HAD A CHANCE



Irving Berlin Inc.
MUSIC PUBLISHERS
799 SEVENTH AVE., NEW YORK, N.Y.



MADE IN
U.S.A.

I NEVER HAD A CHANCE

By IRVING BERLIN

Moderato

Piano introduction in C major, 4/4 time. The piece begins with a forte (f) dynamic. The right hand features a melodic line with eighth and sixteenth notes, while the left hand provides a steady accompaniment of quarter notes. A triplet of eighth notes appears in the right hand towards the end of the first measure.

VOICE **) C*

I guess there's noth - ing to do — And noth - ing to say,

Chord diagrams for C (x02320), F (xx3232), and C (x02320).

Piano accompaniment for the first vocal line, starting with a piano (p) dynamic. The right hand uses chords and moving lines, while the left hand plays a simple bass line.

— But sim - ply go on my way — And call it a day. —

Chord diagrams for Gdim (xx3230), Dmi (xx0232), Fmi (xx3231), G7 (xx3233), and C (x02320).

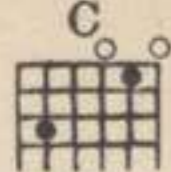
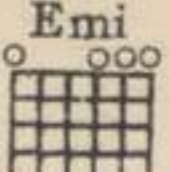
Piano accompaniment for the second vocal line, continuing the harmonic support with chords and moving lines in both hands.

I guess I'm read - y to go — Right

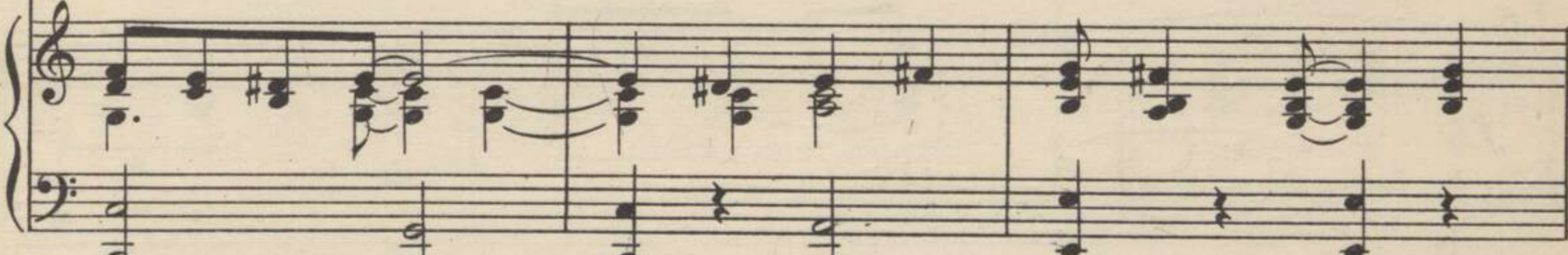
Chord diagrams for G7 (xx3233), C (x02320), and F (xx3232).

Piano accompaniment for the third vocal line, concluding the piece with sustained chords in the right hand and a simple bass line in the left hand.

**) Symbols for Guitar, Chords for Ukulele and Banjo*

C  

back on the shelf _____ Be - cause at last I've learned where



B7  Emi  D7  G7 

you're con - cerned, I've just been fool - ing my - self. _____



CHORUS C  Gdim.  G7  C 

I _____ NEV - ER HAD A CHANCE, _____ I thought you

p-f



C  Emi  Ami  Gdim.  G7 

cared for me, but now I see I NEV - ER HAD A CHANCE. _____



WARNING! Any one who copies the words or music of this song, or any portion thereof, will be criminally prosecuted, under section 28 of the United States Copyright Law, and section 441^a of the New York Penal Law.

I _____ NEV - ER HAD A CHANCE, _____

Dmi G7

— Though you nev - er told _____ me so, Some - how I know I

Dmi G7 Dmi G7

NEV - ER HAD A CHANCE. _____ I _____

C Gdim.

— knew we'd have to part _____ For I could

G7 C

C Emi Ami Gdim. G7

al - ways reach your lips But I could nev - er reach your heart.

Dmi G7

My dream a - bout ro - mance

Dmi G7 Dmi G7

End - ed in a friend - ly chat, but more than that I

1. C G7 2. C

NEV - ER HAD A CHANCE. NEV - ER HAD A CHANCE.

A REAL TREAT

The New Dance Folio

31 BIG HITS IN ONE BOOK

the new

IRVING BERLIN Inc.
UNIVERSAL

Dance Folio

NO. 26

1934-1935

edition

FOR PIANO

ALL THE HITS OF THE
YEAR ESPECIALLY ARR-
ANGED AS FOX-TROTTS,
WALTZES, ONE-STEPS,
ETC.

WITH UKULELE AND
GUITAR ACCOMPANIMENT

MADE IN
USA



Irving Berlin Inc
MUSIC PUBLISHERS
799 SEVENTH AVE. NEW YORK, N. Y.