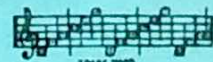


# Somebody Sweet Is Sweet On Me

by  
*Gus Kahn*  
and  
*Walter Donovan*



FEATURED BY  
**ACE BRIGODE**



MADE IN  
USA

Irving Berlin, Inc.  
MUSIC PUBLISHERS  
1607 Broadway New York

ORDER CODE  
"SWEET"

# Somebody Sweet Is Sweet On Me

Tune Ukulele  
or Banjulele Banjo

A D F# B  
Put Capo on 1st fret

By GUS KAHN and  
WALTER DONOVAN

Moderato

First system of piano introduction in G major (two flats). Treble clef, 2/4 time. Starts with a forte (f) dynamic. The bass line consists of quarter notes, while the treble line has chords and eighth notes.

Second system of piano introduction. Continues the melody and accompaniment from the first system.

VOICE



Vocal line and piano accompaniment for the first line of lyrics. The piano part is marked 'Vamp' and 'p' (piano). The vocal line has a G major chord diagram above it.

Ma - mie Reil - ly came  
Lit - tle Ma - mie said

Vocal line and piano accompaniment for the second line of lyrics. The piano part continues with chords and bass notes. The vocal line has four G major chord diagrams above it.

home all high - ly ex - cit - ed - said I've in -  
please don't blame me for rav - in' if I'm be -

Ukulele Arr by  
MAY SINGHI BREEN

vit - ed a boy to call  
 hav - in' a wee bit queer

Tho' I nev - er, well hard - ly ev - er, could get one  
 You'll dis - cov - er, my hand - some lov - er's the rea - son

— at last I've met one the prize of all  
 — you'll find him pleas - in' a per - fect dear

CHORUS



Moth-er get my part-y dress — there's a rea-son can't you guess?—  
 Moth-er put that Mor-ris chair — where the car-pet shows the wear —

*p-f*



— Some-bod-y sweet is sweet on me — Says he's gon-na  
 — Some-bod-y sweet is sweet on me — Moth-er make some

call to - night — get the par - lor fixed up right — Some - bod - y  
 o - range - ade — bor - row Miss - us Simp - son's maid — Some - bod - y



sweet is sweet on me — Sis - ter Sus - ie  
 sweet is sweet on me — Fa - ther if you

bake some pies \_\_\_\_\_ and make some jam \_\_\_\_\_ Want to show him  
 want to hear \_\_\_\_\_ some real bad news \_\_\_\_\_ Here's an eve-ning

what a prize \_\_\_\_\_ I real-ly am \_\_\_\_\_ Fath-er put your  
 when you can't \_\_\_\_\_ take off your shoes \_\_\_\_\_ When I speak of

col-lar on \_\_\_\_\_ lend a coat to un-cle John \_\_\_\_\_ Some-bod-y sweet is  
 Ca-vi - ar \_\_\_\_\_ don't say "it's a darn good car" \_\_\_\_\_ Some-bod-y sweet is

sweet on me. \_\_\_\_\_ Moth-er get my me. \_\_\_\_\_  
 sweet on me. \_\_\_\_\_ Moth-er put that me. \_\_\_\_\_