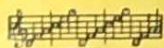


TED LEWIS' LATEST SUCCESS
SHOW ME THE WAY

WITH
UKULELE
ARRANGEMENT



RS

MADE IN
USA

Words by
BENNY DAVIS
Music by
TED LEWIS
and
FRANK ROSS

Irving Berlin, Inc.
MUSIC PUBLISHERS
1607 Broadway New York

SHOW ME THE WAY

Words by
BENNY DAVIS

Tune Ukulele
G C E A

Music by
TED LEWIS
and FRANK ROSS

Moderato

f

The piano introduction consists of two staves. The right hand features a melodic line with eighth and sixteenth notes, while the left hand provides a simple harmonic accompaniment with quarter notes.

Ukulele Arr. by
MAY SINGHI BREEN

Till ready

p

The ukulele arrangement is shown on a single staff. It begins with a rest for two measures, then enters with a melody. A dynamic marking of *p* is present. The notation includes various chords and melodic lines.

VOICE

Sweet-heart since first that I met you I fell in love at a glance
Fate must have brought us to-gether some-how, it just had to be

The vocal melody is written on a single staff. It includes the lyrics and is accompanied by chord diagrams for the ukulele. The melody is in a major key and has a moderate tempo.

p

The piano accompaniment for the first two lines of lyrics is shown on two staves. It features a simple harmonic accompaniment with quarter notes in the left hand and chords in the right hand.

Bb *G*

Your sweet smile haunts me all of the while I hope I stand a chance, For
In my dreams you are with me it seems You were meant just for me, Sweet-

The vocal melody continues on a single staff. It includes the lyrics and is accompanied by chord diagrams. The melody is in a major key and has a moderate tempo.

The piano accompaniment for the second two lines of lyrics is shown on two staves. It features a simple harmonic accompaniment with quarter notes in the left hand and chords in the right hand.

4

B^b *B^b* *G* *C*

there is noth - ing I won't do now it's up to you.
heart now I can hard - ly wait please don't hes - i - tate.

CHORUS

F *B^b* *E^b* *B^b*

Show me the way _____ to make you love me _____ Show me the

p-f

C *C* *F* *D*

way _____ to win your heart _____ I've tried and tried _____ but all in

B^b *G* *C*

vain _____ And al-though you keep me guess-in' still I'm con-fess in' I'll try a-

F B^b E^b C

gain, Show me the way ————— Please stop your teas - in' Dreams may come

F C D B^b
true ————— some fu-ture day ————— I'll ev-en fur-nish a flat

B^b M C D G

— a lit-tle dog and a cat ————— And I'll go fur-ther than that —————

C 1. 2.

— Show me the way ————— Show me the way —————