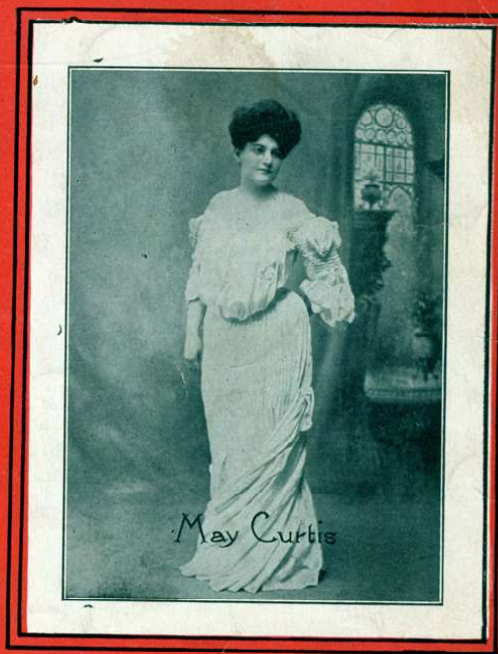


BY THE COMPOSER OF "TEASING"

I WANT TO BE LOVED



WORDS BY
JOE.ROSEY
MUSIC BY
ALBERT Von TILZER



THE YORK MUSIC CO
ALBERT Von TILZER, Mgr.
40 WEST 28TH ST., N.Y.

5

ffirt.

Try this over on your Piano. Tell Me With Your Eyes.

Lyric by
ARTHUR J. LAMB.

Melody by
ALBERT VON TILZER.

Moderato.



mf

The piano introduction consists of two staves. The right hand plays a melody of eighth and quarter notes, while the left hand provides a harmonic accompaniment with chords and single notes. The tempo is marked 'Moderato' and the dynamic is 'mf'.



Birds to their mates are call - ing, Breez - es and flow - ers
Stars in the deep blue heav - ens, Shine with a bright - er

The first system of the song features a vocal line on a single staff and piano accompaniment on two staves. The lyrics are: "Birds to their mates are call - ing, Breez - es and flow - ers / Stars in the deep blue heav - ens, Shine with a bright - er".



woo, Sha - dows of eve - ning are fall - ing,
light, Soft in the night - in - gale's mu - sic,

The second system continues the song with a vocal line and piano accompaniment. The lyrics are: "woo, Sha - dows of eve - ning are fall - ing, / light, Soft in the night - in - gale's mu - sic,".

All Rights reserved.

Copyright MCMIV by The York Music Co.
Albert Von Tilzer, Mgr.
40 West 28th St. New York.

English Copyright Secured.

Complete copies may be had where you bought this.

I Want To Be Loved.

Words by JOE ROSEY.

Music by ALBERT VON TILZER.

Moderato.

The piano introduction consists of two staves. The right hand starts with a series of chords and moving lines, marked with a forte (*f*) dynamic. The left hand provides a steady accompaniment. The piece concludes with a *fz* (forzando) accent followed by a *mf dim.* (mezzo-forte, decrescendo) marking.

I know that I seem ver - y bold, but
He said "I'll show you when I go, that

The vocal line is written on a single staff. The piano accompaniment continues below, marked with a piano (*p*) dynamic and the instruction *sempre legato.*

I feel sad and blue; My beau and I, we
I'm not all to blame; I saw you with an

The vocal line continues on a single staff. The piano accompaniment is shown on two staves below.

had a spat, now what am I to do? I
oth - er man, but he can't love the same;" "Now

The vocal line continues on a single staff. The piano accompaniment is shown on two staves below.

All Rights Reserved.

Copyright MCMIV by The York Music Co.
Albert Von Tilzer Mgr.
40 West 28th St. New York.

English Copyright Secured.

tried my best to make it up, but he said he was through; — I'm Jim, you said, when first we met, that we would nev - er part; — But

go - ing home, yes all a - lone, un - less you'd love me too. still I miss your lov - ing kiss, what's wrong with you, sweet - heart?"

colla voce. *dim - e - rit.* *rall.*

CHORUS.

I want to be loved, I want to be loved — but

I am so shy don't you see, Why does - n't some - one

please take a hint, — and make a fuss o - ver me? — I

want to be loved, — I want to be loved, — I

want to be kissed — and hugged; — So if you are wise, — you'll

look in my eyes, — And see that I want to be loved. —

dim - e - rall

Try This Over--You Can Get It At Your Dealers

"You Mustn't Pick Plums From My Plum Tree."

Words by ARTHUR J. LAMB.

Music by ALBERT VON TILZER.

Moderato.

PIANO.

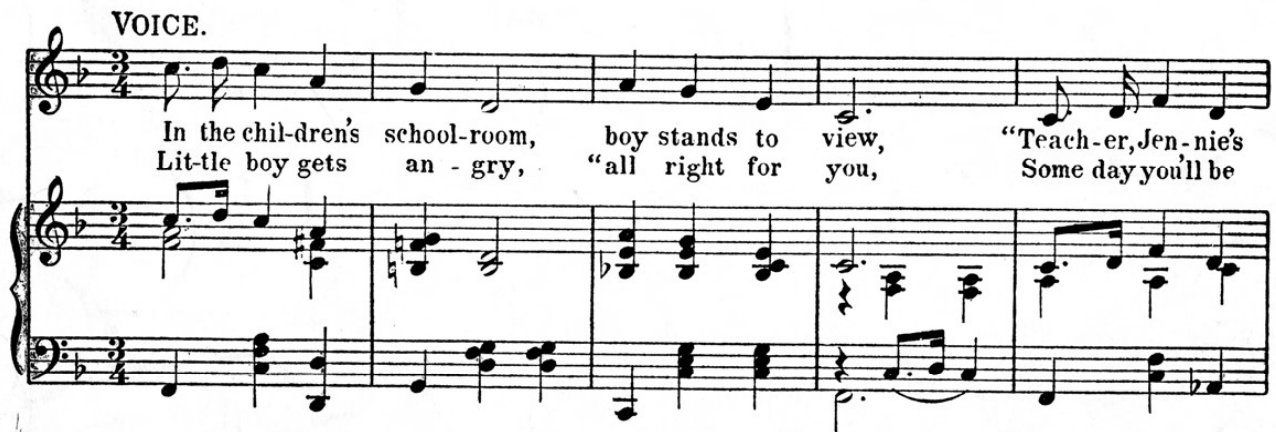


mf

16

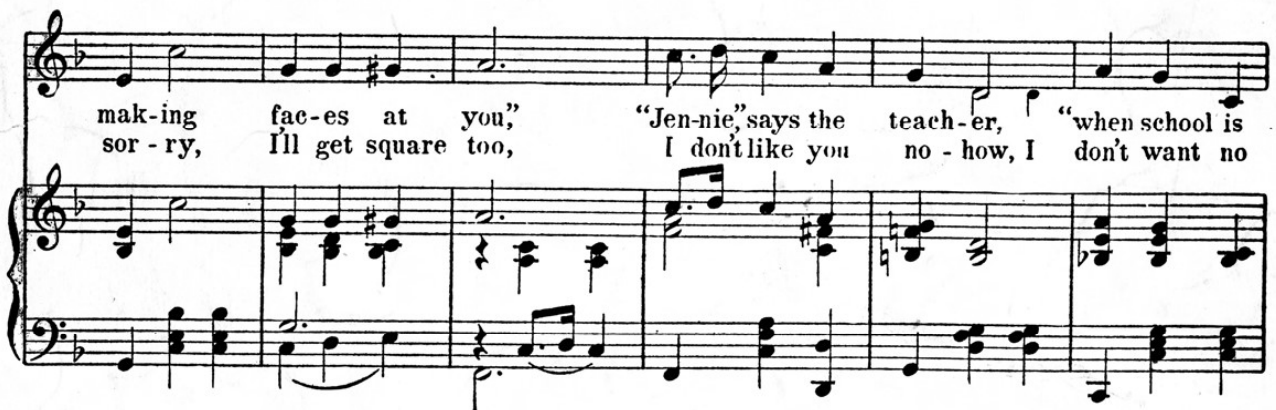
The piano introduction is in 2/4 time, marked Moderato. It begins with a treble clef and a key signature of one flat (B-flat). The melody starts on a half note G4, followed by quarter notes A4, B4, and C5. The bass line consists of a steady eighth-note accompaniment: G3, A3, B3, C4, D4, E4, F4, G4. The piece concludes with a final chord of G3, B3, and D4.

VOICE.



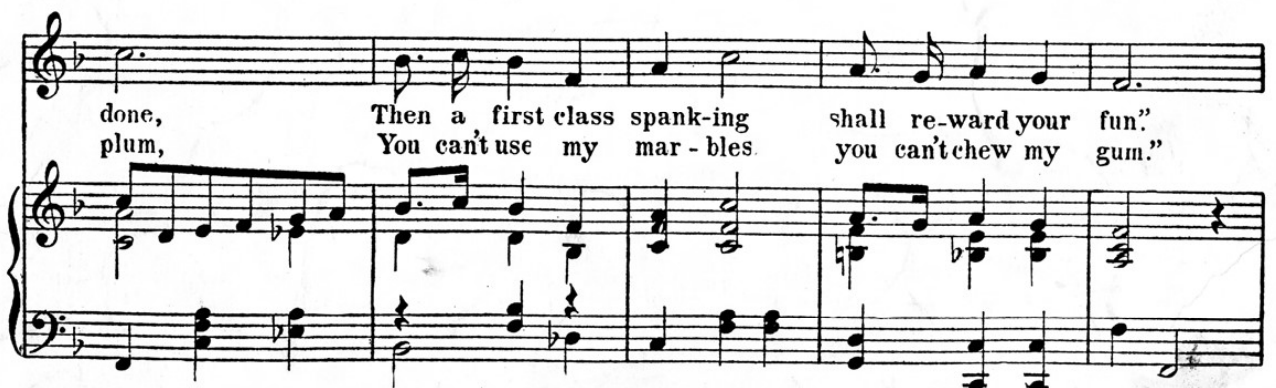
In the chil-dren's school-room, boy stands to view, "Teach-er, Jen-nie's
Lit-tle boy gets an-gry, "all right for you, Some day you'll be

The first vocal line is in 2/4 time. The melody starts on a half note G4, followed by quarter notes A4, B4, and C5. The lyrics are: "In the chil-dren's school-room, boy stands to view, 'Teach-er, Jen-nie's Lit-tle boy gets an-gry, 'all right for you, Some day you'll be". The piano accompaniment continues with the same eighth-note pattern as in the introduction.



mak-ing fac-es at you," "Jen-nie," says the teach-er, "when school is
sor-ry, I'll get square too, I don't like you no-how, I don't want no

The second vocal line continues the melody. The lyrics are: "mak-ing fac-es at you," "Jen-nie," says the teach-er, "when school is sor-ry, I'll get square too, I don't like you no-how, I don't want no". The piano accompaniment continues with the same eighth-note pattern.



done, Then a first class spank-ing shall re-ward your fun."
plum, You can't use my mar-bles you can't chew my gum."

The third vocal line concludes the melody. The lyrics are: "done, Then a first class spank-ing shall re-ward your fun." "plum, You can't use my mar-bles you can't chew my gum." The piano accompaniment continues with the same eighth-note pattern.

Copyright MCMIV by The York Music Co.
Albert Von Tilzer Mgr.
40 West 28th St. New York.

All rights reserved.

English Copyright Secured.