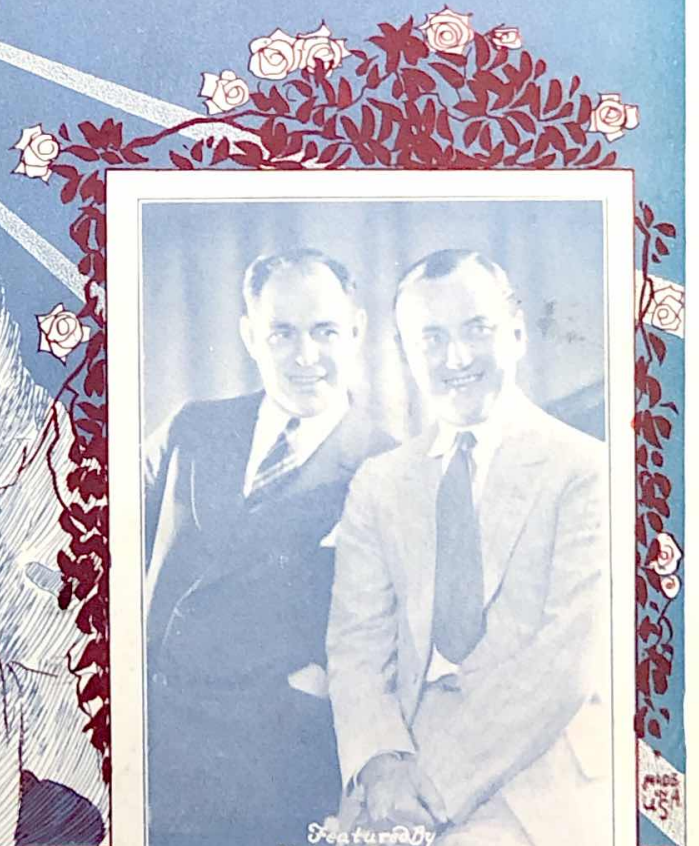


MOMSY

JACK YELLEN
ED. 'Nemo' ROTH &
DAVE RINGLE

*WITH
UKULELE
Arrangement*



Featuring
VAN & SCHENCK

AGER, YELLEN & BORNSTEIN INC.

MUSIC PUBLISHERS

745-7TH. AVE.



NEW YORK

Barbelle

MOMSY

Ukulele Arr. by
MAY SINGHI BREEN
"The Ukulele Lady"

Tune Ukulele
or Banjulele Banjo
A D F# B

By JACK YELLEN,
ED "Nemo" ROTH
& DAVE RINGLE

Valse moderato

The piano introduction is in 3/4 time with a key signature of one sharp (F#). It begins with a forte (*f*) dynamic. The right hand features a series of chords and melodic fragments, while the left hand provides a steady bass line. The piece concludes with a fermata over the final chord.

VOICE

I am a - fraid That I have strayed
I'm grown up now And yet some - how

p legato

The vocal line is written in treble clef with a key signature of one sharp. The piano accompaniment is in 3/4 time, starting with a piano (*p*) dynamic and a legato marking. The piano part features a mix of chords and moving lines in both hands.

Too far from you, moth-er dear. _____ Out in the cold
I feel to - night like a kid; _____ Long-ing to be

p. p.

The vocal line continues in treble clef. The piano accompaniment continues in 3/4 time, with piano (*p.*) dynamics. The piece ends with a fermata over the final chord.

Far from the fold, Gee, how I wish you were near!
 Back on your knee, Cry-ing as I of - ten did:

CHORUS

Mom - sy! Mom - sy! Your lad - die's

p-f

call - ing you. Mom - sy!

Mom - sy! Just like I used to do.

What I'd give if I could rest My

tir - ed head up - on your breast!

Mom - syl Mom - syl Gee, I wish I were

back home with you. you.