

IT'S ALL RIGHT WITH ME

CAN-CAN

WORDS and
music by

COLE PORTER

50¢

FEUER and MARTIN present
COLE PORTER'S

CAN-CAN

book and direction by

ABE BURROWS

dances and musical numbers staged by

MICHAEL KIDD

settings and lighting by

JO MIELZINER

costumes by

MOTLEY

CAN-CAN • C'EST MAGNIFIQUE
NEVER GIVE ANYTHING AWAY
ALLEZ-VOUS-EN • GO AWAY
I LOVE PARIS • AM IN LOVE
IT'S ALL RIGHT WITH ME
COME ALONG WITH ME • MONTMART'
IF YOU LOVED ME TRULY

BUXTON HILL MUSIC CORPORATION
RKO BUILDING • Rockefeller Center • NEW YORK
Sole Selling Agent
CHAPPELL & CO., INC.

From the brilliant and prolific pen of...

COLE PORTER

We remind you of a few of his incomparable melodies

ACE IN THE HOLE

Let's Face It

ALL I'VE GOT TO GET NOW IS MY MAN

Panama Hattie

AT LONG LAST LOVE

You Never Know

BY CANDLE LIGHT

You Never Know

CLOSE

Rosalie

COUNT YOUR BLESSINGS

Mexican Hayride

DO I LOVE YOU

DuBarry Was A Lady

DOWN IN THE DEPTHS

Red Hot and Blue

DREAM DANCING

You'll Never Get Rich

EASY TO LOVE

Born To Dance

EVERYTHING I LOVE

Let's Face It

EVERYTIME WE SAY GOODBYE

Seven Lively Arts

FARMING

Let's Face It

FRIENDSHIP

DuBarry Was A Lady

FROM NOW ON

Leave It To Me

GET OUT OF TOWN

Leave It To Me

GIRLS

Mexican Hayride

HEY, BABE HEY

Born To Dance

I ALWAYS KNEW

Something To Shout About

I CONCENTRATE ON YOU

Broadway Melody of 1940

I HATE YOU DARLING

Let's Face It

I LOVE YOU

Mexican Hayride

IN THE STILL OF THE NIGHT

Rosalie

IS IT THE GIRL, OR IS IT THE GOWN

Seven Lively Arts

IT MIGHT HAVE BEEN

Something To Shout About

IT'S D'LOVELY

Red Hot and Blue

I'VE GOT MY EYES ON YOU

Broadway Melody of 1940

KATIE

DuBarry Was A Lady

LET'S NOT TALK ABOUT LOVE

Let's Face It

LOVE OF MY LIFE

The Pirate

MAKE IT ANOTHER OLD FASHIONED

Panama Hattie

MOST GENTLEMEN DON'T LIKE LOVE

Leave It To Me

MY HEART BELONGS TO DADDY

Leave It To Me

MY MOTHER WOULD LOVE YOU

Panama Hattie

NO, YOU CAN'T HAVE MY HEART

You Never Know

ONLY ANOTHER BOY AND GIRL

Seven Lively Arts

OURS

Red Hot and Blue

PIPE DREAMING

Around The World

RIDIN' HIGH

Red Hot and Blue

ROSALIE

Rosalie

SHOULD I TELL YOU I LOVE YOU

Around The World

SINCE I KISSED MY BABY GOODBYE

You'll Never Get Rich

SING TO ME GUITAR

Mexican Hayride

SO NEAR AND YET SO FAR

You'll Never Get Rich

VISIT TO PANAMA

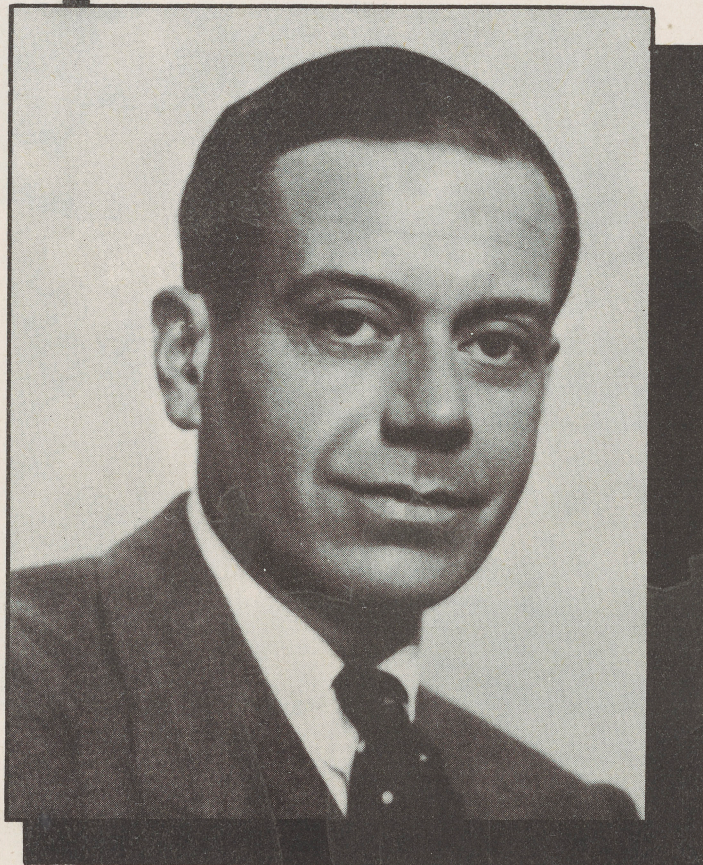
Panama Hattie

WHEN LOVE BECKONED

DuBarry Was A Lady

YOU CAN DO NO WRONG

The Pirate





It's All Right With Me

Words and Music by
COLE PORTER

Steadily moving fox trot

Piano *mf*

Refrain *mp*

It's the wrong time and the wrong place tho' your

face is charm - ing, it's the wrong face, it's not

{her} {his} face but such a charm - ing face that it's

1956-5

Copyright 1953 by Cole Porter

Buxton Hill Music Corporation, Owner of worldwide publication and allied rights
Sole selling agent, Chappell & Co. Inc., New York, N.Y.

International Copyright Secured

Made in U. S. A.

ALL RIGHTS RESERVED including public performance for profit

Any arrangement or adaptation of this composition without the consent of the owner is an infringement of copyright

F9 F7 G Fm6 G F G7

all right with me. It's the

dim. *R.H.* *mp*

Cm F9

wrong song in the wrong style tho' your

Cm Fm

smile is love - ly, it's the wrong smile, it's not

Bb Bb9 Bb7 Bbm6 C9

{her
his} smile but such a love - ly smile that it's

mf *sf*

F9 Fm7 Bb7 Eb

all right with me. You

dim. *mf*

Bbm Eb9 Cdim

can't know how hap - py I am that we met, I'm

Abm Fdim Eb Ebmaj.7 Eb6

strange - ly at - tract - ed to you, There's

Bbm6 C7(b9) F7

some - one I'm try - ing so hard to for - get, Don't

Fm6 **G7** **Cm6** **G** **F** **G7**

you want to for - get some - one too? _____ It's the

Detailed description: This system contains the first two lines of music. The top staff is the vocal line in G minor, with lyrics "you want to for - get some - one too? _____ It's the". The piano accompaniment is in the left hand, featuring chords and moving lines. Chord diagrams for Fm6, G7, Cm6, G, F, and G7 are shown above the vocal staff. A dynamic marking of *mp* is present in the piano accompaniment.

Cm **F9**

wrong game _____ with the wrong chips, tho' your

Detailed description: This system contains the third and fourth lines of music. The vocal line continues with lyrics "wrong game _____ with the wrong chips, tho' your". The piano accompaniment continues with chords and moving lines. Chord diagrams for Cm and F9 are shown above the vocal staff.

Cm **Fm**

lips are tempt - ing, they're the wrong lips, They're not

Detailed description: This system contains the fifth and sixth lines of music. The vocal line continues with lyrics "lips are tempt - ing, they're the wrong lips, They're not". The piano accompaniment continues with chords and moving lines. Chord diagrams for Cm and Fm are shown above the vocal staff.

Bb **Bb9** **Bb7** **Bbm6** **C9**

{her
his} lips, but they're such tempt - ing lips _____ that if

Detailed description: This system contains the seventh and eighth lines of music. The vocal line continues with lyrics "{her
his} lips, but they're such tempt - ing lips _____ that if". The piano accompaniment continues with chords and moving lines. Chord diagrams for Bb, Bb9, Bb7, Bbm6, and C9 are shown above the vocal staff. Dynamic markings of *mf* and *sf* are present in the piano accompaniment.

F9 F7 Bb9 Gm D Fm7 Bb7

some night you're free, dear, it's

dim.

Ebmaj.7 Eb7 Eb7+ Abmaj.7

all right, it's all right

cresc.

Ab7 F9 Fm7

with me.

1. Eb G7 2. Eb

It's the

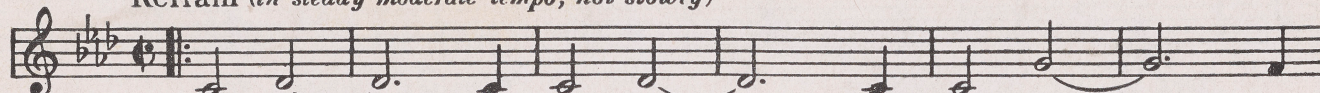
mp *sf*

From **COLE PORTER'S**
LATEST TRIUMPH

"KISS ME KATE"

So In Love

Refrain (*in steady moderate tempo, not slowly*)



Strange, dear, — but true, dear, — When I'm close — to

Why Can't You Behave

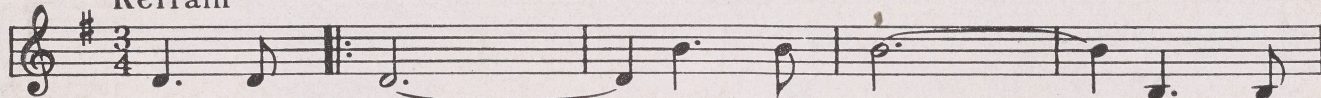
Refrain (*Slowly*)



Why can't you be - have? — Oh,

Wunderbar

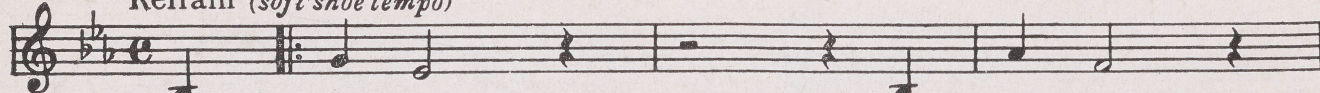
Refrain



Wun - der - bar, — wun - der - bar! — What a

Bianca

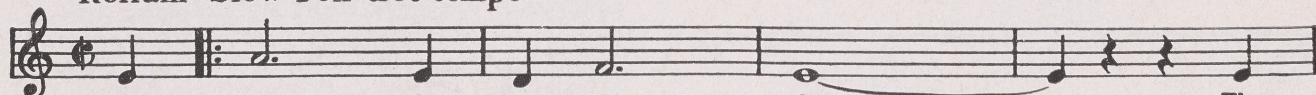
Refrain (*soft shoe tempo*)



Bi - an - ca, Bi - an - ca,

Were Thine That Special Face


Refrain *Slow Fox-trot tempo*



Were thine that spec - ial face, — The

Always True To You In My Fashion

Refrain (*graceful fox trot*)



If a cus - tom tail - ored vet — Asks me out for some - thing wet, —

Copyright 1948 by Cole Porter
Buxton Hill Music Corporation, Publisher and owner of publication and allied rights throughout the world
Sole Selling Agent, T. B. HARMS COMPANY, New York, N.Y.

T. B. HARMS COMPANY

RKO BUILDING • Rockefeller Center • NEW YORK
By Arrangement with

BUXTON HILL MUSIC CORPORATION