

Has Anybody Seen My Corinne?

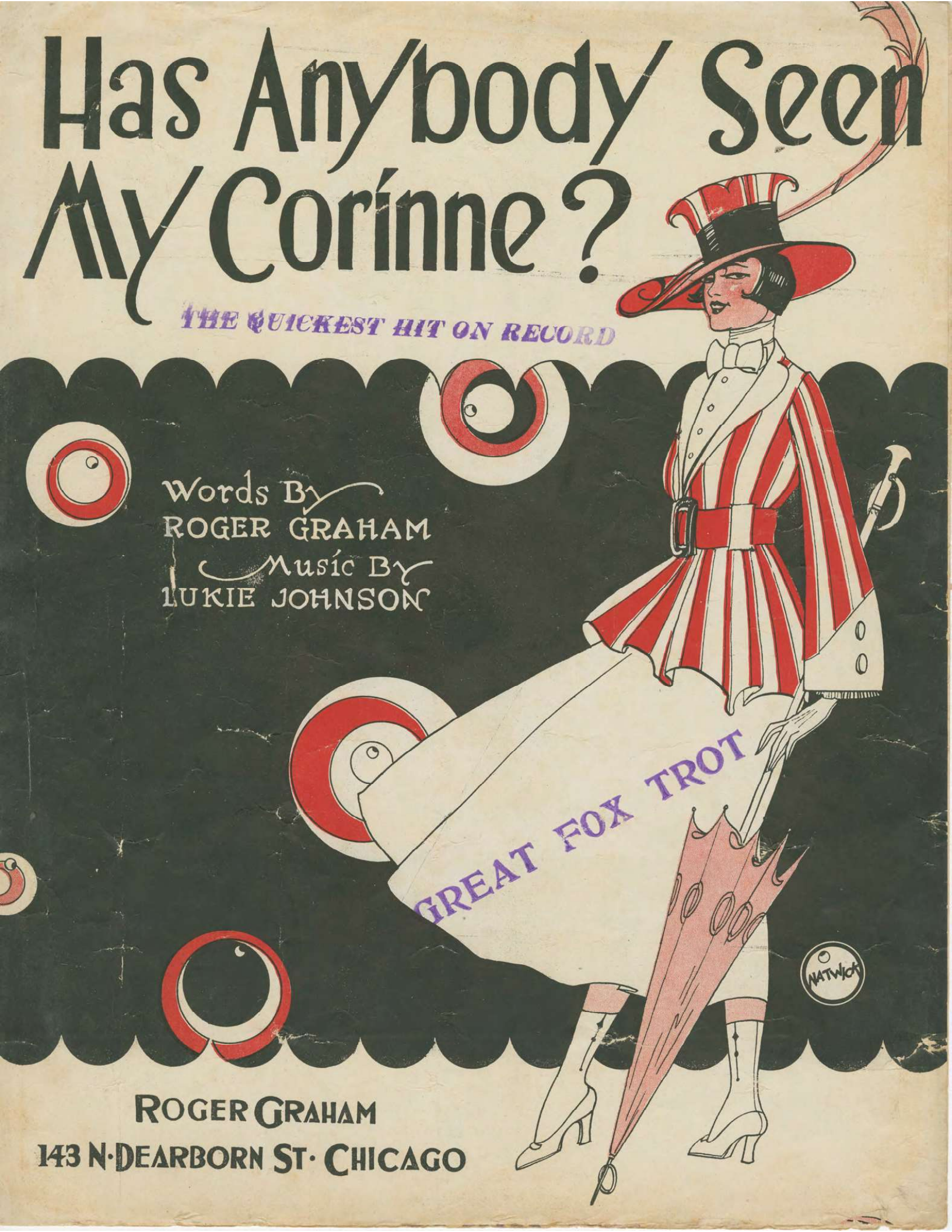
THE QUICKEST HIT ON RECORD

Words By
ROGER GRAHAM
Music By
LUKIE JOHNSON

GREAT FOX TROT



ROGER GRAHAM
143 N. DEARBORN ST. CHICAGO



HAS ANYBODY SEEN MY CORINNE?

Words by
ROGER GRAHAM.

Music by
LUKIE JOHNSON.

Moderato.

VAMP

The piano introduction consists of two systems of music. The first system is marked 'Moderato' and features a treble clef with a melody of eighth and sixteenth notes, and a bass clef with a rhythmic accompaniment of eighth notes. Dynamics include a forte (*f*) marking and accents. The second system is marked 'VAMP' and features a treble clef with a melody of eighth notes and a bass clef with a simple accompaniment. Dynamics include a piano (*p*) marking.

My girl ran a - way last night, I did my best to treat her right,
Gee, but she was good and kind, A girl like her is hard to find,

The vocal line is in a treble clef with a melody of quarter and eighth notes. The piano accompaniment is in a bass clef with a simple accompaniment of quarter notes. Dynamics include a piano (*p*) marking.

For no rea - son I can see I was cra - zy 'bout her tho't she was wild a-bout me,
For her sweet smile you would fall For the way she loved me, there's nothing bet-ter than all,

The vocal line is in a treble clef with a melody of quarter and eighth notes. The piano accompaniment is in a bass clef with a simple accompaniment of quarter notes. Dynamics include a piano (*p*) marking.

In so wor - ried, 'bout to cry, to think she left and nev - er said good - bye, Heart
Her eyes say, "I've got you, dear," I'd kissed her lips, then longed to lin - ger near To

The vocal line is in a treble clef with a melody of quarter and eighth notes. The piano accompaniment is in a bass clef with a simple accompaniment of quarter notes. Dynamics include a piano (*p*) marking.

brok - en and a - lone I want my ba - by to come home. Has an - y -
hold my babe once more and love her as I did be - fore. Has an - y -

The vocal line is in a treble clef with a melody of quarter and eighth notes. The piano accompaniment is in a bass clef with a simple accompaniment of quarter notes. Dynamics include a piano (*p*) marking.

Copyright MCMXVIII by Roger Graham.

International Copyright Secured.

148 North Dearborn Street.

Chicago, Illinois.

All Rights Reserved.

The publisher reserves the right to the use of this Copyrighted Work upon the parts of Instruments serving to reproduce it mechanically.

CHORUS.

bod - y seen my Co - rinne? Oh, she's a dream, Just like a Vampire,
(She's my Ba-by Doll)

she set my heart on fire I re-gret the day, the

day that I was born, 'Cause my lov - in' Co - rin-na has gone,
(She done me wrong)

If an-y - bod - y sees my Co - rinne No matter where Corin - a may be,

Tell my Corin-na to come right back to me. me. (I want some lovin', sweetie dear.)

Has Anybody Seen My Corinne? 2.

H.S. TALBOT CO.
Music Printers
Chicago.

SAMPLE COPY

BEAUTIFUL SONGS THAT WILL LIVE FOREVER

BY **MAY HILL** — THE POPULAR WESTERN GIRL COMPOSER

TRY THESE OVER ON YOUR PIANO

Words by WALTER HIRSCH

YOU CAN'T BRING BACK YESTERDAY

REFRAIN *Valse Moderato con espressione*

Music by MAY HILL.

You can bring back the smile that has faded a-way, You can bring back a ship on the sea, You can

Words by WALTER HIRSCH.

CHORUS *With expression*

A TEAR, A KISS, A SMILE

Music by MAY HILL.

A tear, a kiss, a smile, Like sunshine after rain That

Words by MARVIN LEE.

THE MOST BEAUTIFUL PICTURE OF ALL

CHORUS. *Valse Moderato con espressione*

Music by MAY HILL.

You may paint ev-ry day at its dawn-ing Or at dusk, when the night sha-dows fall, The

Words by ROGER GRAHAM.

REFRAIN.

Slowly with expression

YOU'LL WANT ME BACK SOME DAY

Music by MAY HILL.

You wrecked ev- 'ry dream that I had, dear, You shattered each hope that I knew,

Words by ROGER GRAHAM.

CHORUS. *Valse lento con espressione*

I BELIEVE IN YOU

Music by MAY HILL.

I be-lieve that you love-me, I be-lieve you are true,

Words by CASPER NATHAN.

CHORUS. *Valse lento con espressione*

THE QUEEN OF MY CASTLE OF DREAMS

(With Violin Obligato.)

Music by MAY HILL.

She's the Queen of my Cas-tle of Dreams Im her slave guarding Love's gard-en wall I'm

Price 15 Cents Each, Postpaid.

ALL SIX SONGS—SPECIAL PRICE 75 Cents, Postpaid.

ROGER GRAHAM

143 North Dearborn St.

Chicago, Illinois.