

Roses of Picardy

SONG



WORDS BY
FRED. E. WEATHERLY

MUSIC BY
HAYDN WOOD

ALSO PUBLISHED AS

VOCAL DUET (FOR CONTRALTO AND BARITONE)	75
" (FOR SOPRANO AND TENOR)	75
FEMALE OCTAVO (QUARTETTE FOR S.S.A.)	15
MIXED OCTAVO (QUARTETTE FOR S.A.T.B.)	15
MALE OCTAVO (QUARTETTE FOR T.T.B.)	15
PIANOFORTE SOLO	60
VIOLIN AND PIANO	60
SONG-FRENCH VERSION BY	60
WALTZ-PIANO SOLO	60
SONG ORCHESTRATIONS, B, C & D	50
WALTZ " ARRANGEMENT	50
FOX-TROT " ARRANGEMENT	50
BAND SONG ARRANGEMENT	50

PRICE 50 CENTS

EXCEPTING CANADA AND FOREIGN COUNTRIES

CHAPPELL

E. CO. INC.
RKO BUILDING
ROCKEFELLER
CENTER-N.Y.C.

CHAPPELL

MADE IN U.S.A. E. CO. LTD. LONDON

LOW
MEDIUM
HIGH

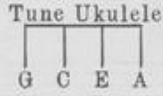
Vp-004673

1916

Roses

ROSES OF PICARDY

Song



Words by
FRED. E. WEATHERLY
 Ukulele arr. by **MAY SINGHI BREEN**

Music by
HAYDN WOOD

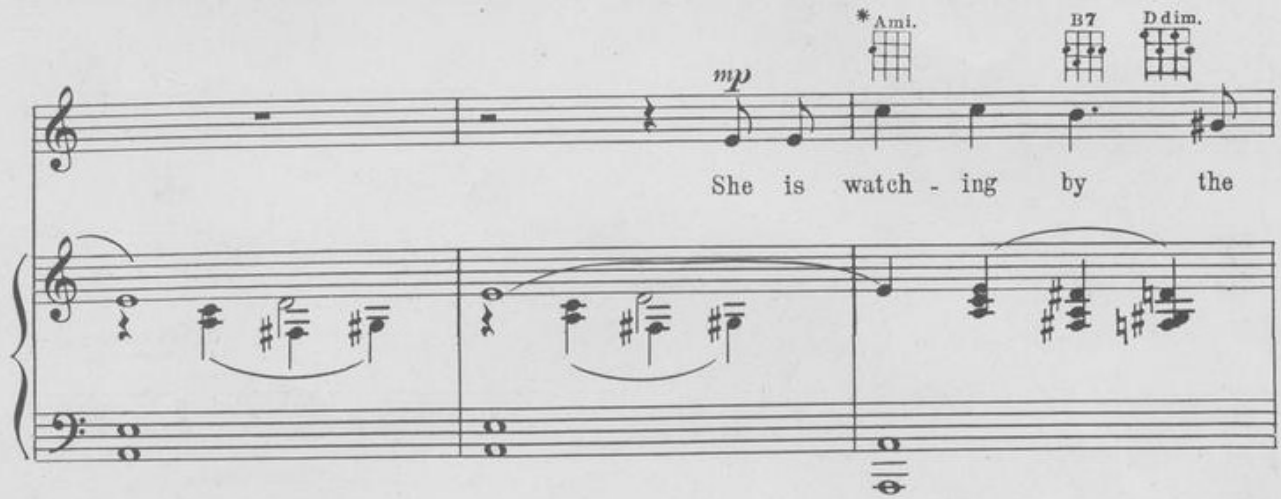
Brightly (Almost two beats in a bar.)

VOICE.

PIANO.



The first system shows the beginning of the piece. The voice part has a whole rest. The piano part starts with a melody in the right hand and accompaniment in the left hand. The tempo is marked *mp* and the performance style is *con Ad.*



The second system contains the first line of lyrics: "She is watch - ing by the". The voice part has a melody starting on a half note. The piano part continues with accompaniment. Chord diagrams for **Ami.*, *B7*, and *Ddim.* are shown above the voice staff.



The third system contains the second line of lyrics: "pop - lars, Col - in - ette with the sea - blue eyes, She is". The voice part continues with a melody. The piano part provides accompaniment. Chord diagrams for *Ami.*, *Fmi.*, *C*, *F*, *Gaug.5*, *C*, and *E7* are shown above the voice staff.

* Letters over UKE diagrams are names of chords adaptable to Banjo or Guitar in original key.
 Symbols for Guitar arr. by S. M. Zoltai

Copyright, 1916, by Chappell & Co Ltd.



watch - ing and long - ing and wait - ing Where the long white road - way

colla voce



lies. And a song stirs in the si - lence, As the



wind in the boughs a - bove, She lis - tens and starts and

p poco meno mosso



trem - bles, 'Tis the first lit - tle song of love:-

poco rit.

pp *Slowly*

"Ro - ses are shin - ing in Pi - car - dy in the hush of the sil - ver

Slowly.

pp

dew, Ro - ses are flow'r - ing in Pi - car - dy, but there's

mf

nev - er a rose like you! And the ro - ses will die with the

p

sum-mer-time, and our roads may be far a - part, But there's

cresc.

cresc.

Chord diagrams shown: G7, C, Ami., Dmi., G7, Gaug5, C, E7 with Bb, A7, Dmi., G7, C, E7, Dmi., G7, Gaug5, C, E7.

poco largamente

A7 D7 Dmi. G7 rit.

one rose that dies not in Pi-car-dy! 'tis the rose that I keep in my

f poco larg. rit.

heart!" **Tempo primo** And the

mp

years fly on for ev - er, Till the sha-dows veil their skies, But he

Ami. B7 Ddim. Ami. Fmi. C F Gaug.5 C E7

loves to hold her lit-tle hands, And look in her sea-blue eyes. And she

colla voce

Ami. B7 Ddim. Ami. F#7 with C Emi. Emi. add C# B7 E7

B7 Edim. E B7

sees the road by the pop - lars, Where they met in the by - gone

C#mi. C#mi7 Dmi.7 G7 Ami. E7

years, For the first lit - tle song of the ro - ses Is the

p poco meno mosso

G A7 D7 G7 G7

last lit - tle song she hears:- "Ro - ses are shin' - ing in

colla voce poco rit. pp Slowly

C Ami Dmi. G7 G aug.5 C E7 with Bb

Pi - car - dy in the hush of the sil - ver dew,

mf **A7** **Dmi.** **D7**

Ro - ses are flow' - ing in Pi - car - dy, but there's nev - er a rose like

p **G7** **G7** **C** **Ami.**

you! And the ro - ses will die with the sum - mer - time, and our

Dmi. **G7** **Gaug. 5** **C** **E7** **f** **poco largamente**

roads may be far — a - part, But there's one rose that dies not in

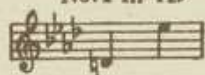
D7 **Dmi.** **G7** **C** **ff** **rit.** **a tempo**

Pi - car - dy! 'tis the rose that I keep in my heart!"

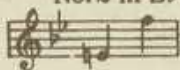
rit. **colla voce** **ff** **a tempo**

ANOTHER GEM FROM THE PEN OF THIS GIFTED COMPOSER

No. 1 in Ab



No. 2 in Bb



No. 3 in C



IN THE GARDEN OF TO-MORROW

Words by
GEO. GRAFFE Jr.

Song

Music by
JESSIE L. DEPPEN

REFRAIN

In the garden of to mor - row, Will the ros-es be more fair?—

Will we find re-lief from sor - row, Will there be more sun-shine th - e re?

For each love flow'r that will blos - som, Some will die and fade a - way.—

REFRAIN

In the garden of to-morrow,
Will the roses be more fair?
Will we find relief from sorrow,
Will there be more sunshine there?
For each love flow'r that will blossom,
Some will die and fade away.
Oh! I'd so much rather,
All my love flow'rs gather,
From the garden of to-day.

Copyright 1924 by Chappell & Co. Ltd.

CHAPPELL & CO. INC., RKO Building, Rockefeller Center, New York, N. Y.