

RESPECTFULLY INSCRIBED TO MISS MARYE SOUTH, TERRE HAUTE, IND.

EDWARD MARSHALL,
 the N. Y. Journal War Correspondent, dangerously wounded
 at Santlago, while accompanying the charge
 of the "Rough Riders."



From The N. Y. Sun, June 29, 1898.

"It took thirty-five minutes to catch up with the party, but it seemed like ten years. Marshall was sleeping under the effect of another opiate, but as we changed off at the latter he woke and had another terrible spasm. When he was quieted he began to sing 'The Banks of the Wabash.' This sounds, I know, like an extract from a Rhoda Broughton novel, but it is true none the less. For nearly half an hour, as we dragged the litter along, Marshall kept repeating the chorus of this song over and over."

ON THE BANKS OF THE WABASH, FAR AWAY.



SONG & CHORUS
 BY

PAUL DRESSER

5

Song	50c.	Mandolin, Guitar and Piano	50c.	Two Mandolins and Guitar	50c.
Waltz	50c.	Two Mandolins, Guitar and Piano	50c.	Orchestra Accompaniment to Song	25c.
Mandolin and Piano	40c.	Mandolin Solo	30c.	Waltz, Orchestra, 10 Pts. and Piano	55c.
Two Mandolins and Piano	50c.	Mandolin and Guitar	40c.	Waltz, Orchestra, 14 Pts. and Piano	75c.
Transcription	50c.	Band	50c.		

PUBLISHED BY
HOWLEY, HAVILAND & CO.,
 1260-66 BROADWAY, NEW YORK GRAND OPERA HOUSE BLOCK, CHICAGO, ILL.
 LONDON, CHAS. SHEARD & CO.

Vp. 004206
 1897
 ON THE

Respectfully inscribed to Miss Mary E. South, Terre Haute, Indiana.

ON THE BANKS OF THE WABASH, FAR AWAY.

SONG and CHORUS.

Words and Music by PAUL DRESSER.

Introduction.
Andante moderato.

The introduction is a piano piece in 2/4 time, marked *Andante moderato*. It begins with a mezzo-forte (*mf*) dynamic and includes a *rall.* (rallentando) section. The music is written for piano with treble and bass staves.

The first two lines of the song are set in 2/4 time. The vocal melody is written in the treble clef, and the piano accompaniment is in the bass clef. The dynamics are marked *p* (piano). The lyrics are:

1. 'Round my In - di - an - a home - stead wave the corn - fields, In the
2. Ma - ny years have passed since I strolled by the riv - er, Arm in

The last two lines of the song continue in 2/4 time. The vocal melody and piano accompaniment are shown. The lyrics are:


dis - tance loom the wood-lands clear and cool, Oft - en
arm, with sweet-heart Ma - ry by my side, It was

times my tho'ts re - vert to scenes of child - hood, Where I
there I tried to tell her that I loved her, It was

first re - ceived my les - sons - Na - ture's school, But
there I begged of her to be my bride, Long

one thing there is miss - ing in the pict - ure, With
years have passed since I strolled thro' the church - yard, She's

On the banks of the Wabash, far away. 4-2.

Bagaduce Music 
Lending Library
Blue Hill, Maine
Donor: **1320**

rall.

out her face it seems so in - com - plete, I
 sleep - ing there my an - gel Ma - ry dear, I

long to see my moth - er in the door - way, As she
 loved her but she thought I did - 'nt mean it, Still I'd

a tempo.

rall. *p*

stood there years a - go, her boy to greet,
 give my fu - ture were she on - ly here.

rall. *p*

CHORUS.

mp *Espressivo.*

Oh, the moon-light's fair to - night a - long the Wa - bash, From the

fields there comes the breath of new - mown hay, Through the

syc - a - mores the can - dle lights are gleam - ing, On the

banks of the Wa - bash, far a - way.

pp *D.C.*

TRY THIS OVER ON YOUR PIANO

THERE'S A MOTHER ALWAYS WAITING YOU,
AT HOME, SWEET HOME

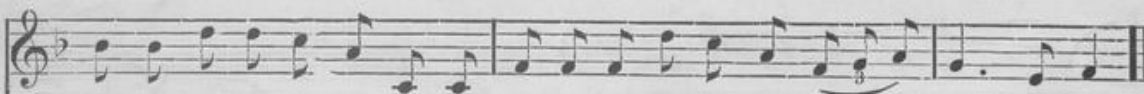
Chorus. *Tenderly*



spoke these words and then she said, "good - bye."..... } When sick - ness o - ver-takes you, When
said, "Thank God, they've sent us back our Jim."..... }



old companions shake you, As thro' the world you wander all alone,..... When friends you haven't any, in your



pock - et not a pen - ny, There's a moth - er al - ways wait - ing you, at home, sweet, home."

