

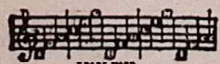
# WHEN YOU COME TO THE END OF THE DAY

Mary B. Jolly



Words by  
**GUS KAHN**

Music by  
**FRANK WESTPHAL**



Irving Berlin, Inc.  
MUSIC PUBLISHERS  
1607 Broadway New York

ORDER CODE  
"END"

MADE  
USA

LEF

# When You Come To The End Of The Day

Words by  
GUS KAHN

Tune Ukulele  
or Banjulele Banjo

Music by  
FRANK WESTPHAL

A D F# B  
Put Capo on 1st Fret

Piano

*f*

The piano introduction consists of two staves in 3/4 time, key of B-flat major. The right hand features a melodic line with eighth and quarter notes, while the left hand provides a harmonic accompaniment with chords and single notes.

Vamp

*p*

The vamp section is marked with a piano (*p*) dynamic and features a repeating rhythmic pattern in the right hand, with a steady bass line in the left hand.

Voice

When shad - ows creep where wear - y birds are nest - ing  
Are you a - lone when twi - light comes a - steal - ing

*p*

The vocal line is accompanied by piano accompaniment. The piano part includes guitar chord diagrams above the staff: x02333, x02333, x02333, and x02333. The piano accompaniment is marked with a piano (*p*) dynamic.

Ukulele Arr. by  
MAY SINGHI BREEN

And twi - light bids the sleep - y rose "Good night"  
Or is there some one near to hold your hand

When drows - y breez - es speak to you of rest - ing  
Does eve - ning bring a sort of lone - some feel - ing

Do they whisp - er that the world's all right? \_\_\_\_\_  
And is some one there to un - der - stand? \_\_\_\_\_

## Chorus

When you come to the end of the day

*p-f*

*p.*

— And the night calls your wor - ries a - way

*p.*

— Do you ev - er watch the set - ting sun and

dream of things that you might have done Do you

turn from your work with a smile \_\_\_\_\_ Do you feel that it's

all worth the while \_\_\_\_\_ As you dream the

twi - light hours a - way when you come to the

1. end of the day. \_\_\_\_\_ 2. When you day. \_\_\_\_\_