

H. A. P.

Down in Maryland



By
Bert Kalmar and Harry Ruby

Waterson, Berlin & Snyder Co.
STRAND THEATRE BUILDING NEW YORK
Trade Mark Registered

MADE IN U.S.A.

Down In Maryland

By BERT KALMAR
and HARRY RUBY

Moderato

Piano

f

Till Ready

p

The piano introduction consists of two staves. The right hand starts with a treble clef and a key signature of one sharp (F#). It begins with a series of eighth and sixteenth notes, creating a rhythmic pattern. The left hand starts with a bass clef and a key signature of one sharp (F#), playing a simple harmonic accompaniment. The tempo is marked 'Moderato'. The introduction ends with a double bar line and the instruction 'Till Ready', followed by a piano dynamic marking 'p'.

Voice

Home ties that bind, cling to me, Home ties, I find, bring to me, Mem'ries of
I miss the blue of the skies, I miss the dew when I rise, I miss the

p

The first system of the vocal line features a single treble clef staff. The melody is written in a key signature of one sharp (F#) and a 4/4 time signature. The lyrics are: "Home ties that bind, cling to me, Home ties, I find, bring to me, Mem'ries of I miss the blue of the skies, I miss the dew when I rise, I miss the". The piano accompaniment for this system is shown in the system below, starting with a piano dynamic marking 'p'.

hap- py child- hood, Roam- ing the hills and wild- wood. Why did I stray far a - way,
brook- let flow- ing, I miss the roost- er crow- ing. Some- day I know I will go,

The second system of the vocal line continues the melody. The lyrics are: "hap- py child- hood, Roam- ing the hills and wild- wood. Why did I stray far a - way, brook- let flow- ing, I miss the roost- er crow- ing. Some- day I know I will go,". The piano accompaniment continues with a steady harmonic accompaniment.

From heav- en's door? Al- tho' I've been a rov - er, I'll roam no more, for —
Back there to stay; And if I could, be- lieve me, I'd leave to - day, say —

rall.

The third system of the vocal line concludes the piece. The lyrics are: "From heav- en's door? Al- tho' I've been a rov - er, I'll roam no more, for — Back there to stay; And if I could, be- lieve me, I'd leave to - day, say —". The piano accompaniment ends with a 'rall.' (rallentando) instruction. The key signature remains one sharp (F#).

Chorus

I've made my mind up, that I'm gon-na wind up, down 'in Mar-y-land,

p-f a tempo

I'm gon-na wind my way, — Down old Ches-a-peake Bay.

I'll ramb-le ov-er, the sweet scent-ed clov-er, Down in Mar-y-land, What a

fool I was to wand-er, From the folks down yon-der. I'm sigh-ing,

I'm cry - ing, for a glimpse of home, sweet home. I love it,

all of it; from the cel - lar to the dome. Some - bod - y's kiss - es, will

make me say this is, just like fair - y - land, I've made my mind up, that

I'm gon - na wind up in Mar - y - land. land.

Fine

PATTER

M - for the Mor-ning-glo-ries on the vine, A - for the Ap - ple trees I used to climb,

R - for the Ros-es rambling 'round the door, - Y - for the Yearn - ing to be there once more, -

L - for the Lov-ing that a - waits me there - A - for the An-gel in the rock-ing chair, -

N - for the Night - in - gale that sings till morn - D - stands for Dix - ie - land where I was born. Oh!

Mar - y - land! - my Mar - y - land! - I'll soon be com - ing your way - Say -

f *ritard* - - *poco* - - *poco*

D.S. al Fine

The Latest Sensational Song Hit

One Night in June

Music by
TED SNYDER
ARTHUR LANGE and
ERNEST KLAPHOLZ

Words by
HARRY B. SMITH and
FRANCIS WHEELER



Chorus

night in June, We heard a tune, My heart will hear for

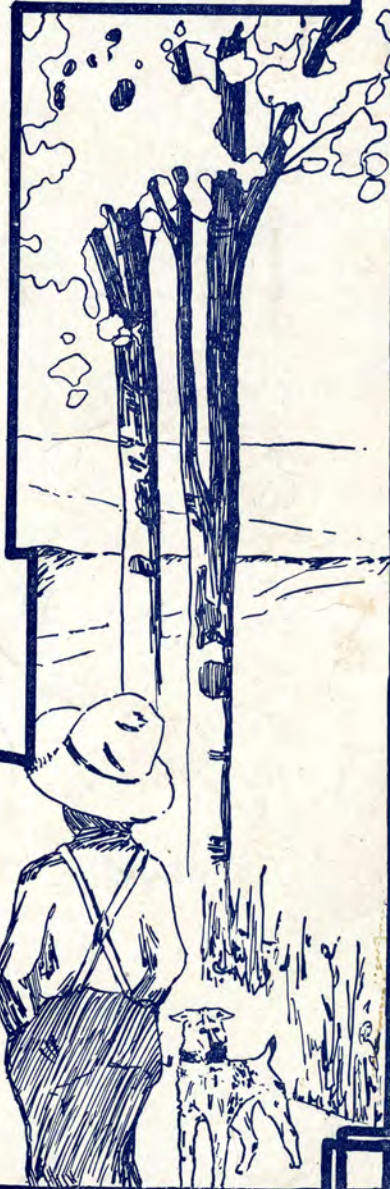
ev-er. Our lips first met; I'll ne'er for-get, that

kiss, tho' years may sev-er. In all my dreams, A-

gain it seems, We two drift on to- geth-er. That

1264.3

Copyright MCMXXII by Waterson, Berlin & Snyder Co.
Copyright Canada MCMXXII by Waterson, Berlin & Snyder Co.
International Copyright Secured



THIS SONG FOR SALE AT ALL MUSIC DEALERS
OR SENT DIRECT BY THE PUBLISHER ON RECEIPT OF 35¢
ALSO OBTAINABLE ON ALL PHONOGRAPH RECORDS AND MUSIC ROLLS
A LIST OF LATEST SONG HITS SENT ON REQUEST

WATERSON, BERLIN & SNYDER CO. STRAND BLD'G, NEW YORK.