



Songs

by

Florence Newell Barbour

AWAKE! IT IS THE DAY	50
STARS OF THE SUMMER NIGHT	50
THREE ROSSETTI LYRICS	
THE SEA-LIMITS	60
SUDDEN LIGHT	50
THE STREAM'S SECRET	50
THE SUMMONS OF SPRING	60
HEART'S LONGING	60
THE GOLDEN FISH	50
WHEN FLAMING MORN BURSTS FORTH	60
AMONG THE LITTLE FOLKS	
(Three Songs about Children)	
BABY-LAND	50
THE WITCH IN THE GLASS	50
THE PIPER	60
THE FLOWER WILL BLOOM	60
JOY CAME WITH THE DAY	60
SIX SONG PICTURES	
BEFORE DAWN	60
THE CORAL GROVE	60
TELL ME THOU WANDERERS	60
O WILD WEST WIND	60
EVERY WAVE CAUGHT A STAR	60
THE STORM	75

Soprano or Tenor

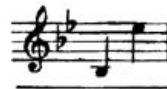
Mezzo-Soprano or Baritone

The Arthur P. Schmidt Co.

BOSTON
120 Boylston Street

NEW YORK
8 West 40th Street

The Coral Grove



JAMES GATES PERCIVAL

FLORENCE NEWELL BARBOUR

Moderately, in a free and flowing style

The piano introduction consists of three systems of music. The first system shows the treble and bass clefs with a 9/8 time signature. The second system features a right-hand (R.H.) melodic line starting with a mezzo-forte (*mf*) dynamic, followed by a piano (*p*) section. The left hand provides a rhythmic accompaniment with eighth notes. The third system continues the piano accompaniment.

The first system of the vocal and piano accompaniment. The vocal line begins with a piano (*p*) dynamic. The lyrics are: "Deep in the wave is a cor-al grove Where the pur-ple mul-let and". The piano accompaniment continues with a piano (*p*) dynamic, featuring a melodic line in the right hand and a rhythmic accompaniment in the left hand.

The second system of the vocal and piano accompaniment. The vocal line continues with a mezzo-forte (*mf*) dynamic and includes a crescendo (*cresc.*) marking. The lyrics are: "gold-fish rove; Where the sea-flow'r spreads its leaves of". The piano accompaniment also features a mezzo-forte (*mf*) dynamic and a crescendo (*cresc.*) marking.

blue, _____ That nev-er are wet with fall - ing

f *mf*

f *mf*

8

Detailed description: This system contains the first two lines of music. The top line is a vocal melody in a treble clef with a key signature of three flats (B-flat, E-flat, A-flat). It begins with a forte (*f*) dynamic and a long note on 'blue,' followed by a phrase 'That nev-er are wet with fall - ing' in a mezzo-forte (*mf*) dynamic. The piano accompaniment is in a grand staff (treble and bass clefs) with the same key signature. It features a strong bass line with a forte (*f*) dynamic and a more melodic upper line with a mezzo-forte (*mf*) dynamic. A fermata is placed over the piano accompaniment at the end of the system. A small '8' is written below the bass clef.

dew, _____ But in bright and change - ful beau - ty

8

Detailed description: This system contains the second two lines of music. The vocal line continues with 'dew,' followed by 'But in bright and change - ful beau - ty'. The piano accompaniment continues with a similar texture, featuring a strong bass line and a melodic upper line. A fermata is placed over the piano accompaniment at the end of the system. A small '8' is written below the bass clef.

shine _____ For down in the green and glass - y

f

8

Detailed description: This system contains the final two lines of music. The vocal line continues with 'shine' followed by 'For down in the green and glass - y'. The piano accompaniment continues with a similar texture, featuring a strong bass line and a melodic upper line. A fermata is placed over the piano accompaniment at the end of the system. A small '8' is written below the bass clef.

poco rit *poco animato*
brine. The floor is of sand like moun - tain

drift And the pearl shells

span - gle the flint - y snow; From

cresc. molto - - - - - *ff* *p*

cor - al rocks, the sea - plants lift Their boughs, — where the

cresc. molto - - - - - *ff*

poco meno mosso

tides — and bil - - - lows

p poco meno mosso

flow; Then,

poco rit. e dim.

Tempo I

p

far be - low in the peace - ful sea, The pur - ple mul - let , and

p

p *tranquillo e espress.*

gold - fish rove, Where the wa - - ters mur - mur

p *tranquillo e espress.*

mf

tran - quil - ly Thro' the bend - ing twigs

mf

poco cresc. - - - - *mf*

of the cor - - al grove, the

poco cresc. - - - - *mf*

p *morendo e molto tranquillo sino al fine*

cor - - al grove.

p

morendo e molto tranquillo sino al fine

p *pp*

p *p* *pp*

LYRIC FANCIES

A SELECTION OF SONGS BY AMERICAN COMPOSERS

CONTAINING THE FOLLOWING SONGS

Vol. I.

BEACH, Mrs. H. H. A.	Ecstasy
BISCHOFF, John W.	The Summer Wind
BRANSCOMBE, Gena	The Morning Wind
CHADWICK, G. W.	Allah
CLOUGH-LEIGHTER, H.	April Blossoms
DANIELS, Mabel W.	The Lady of Dreams
FOOTE, Arthur	The Night has a Thousand Eyes
HADLEY, Henry K.	My Shadow
LANG, Margaret Ruthven	Arcadie
LANG, Margaret Ruthven	An Irish Love Song
MAC-DOWELL, Edward	O Lovely Rose
METCALF, John W.	The Cares of Yesterday
PARK, Edna Rosalind	A Memory

Vol. II.

BEACH, Mrs. H. H. A.	Fairy Lullaby
BRANSCOMBE, Gena	I Send my Heart up to Thee (Serenade)
CHADWICK, G. W.	Thou art so like a Flower
CLOUGH-LEIGHTER, H.	O Heart of Mine
COX, Ralph	April-Tide
FOOTE, Arthur	I'm Wearing Awa'
LANG, Margaret Ruthven	Day is Gone
LYNES, Frank	Roses
MAC-DOWELL, Edward	Merry Maiden Spring
MILLIGAN, Harold V.	My Heart is like a Lute
SALTER, Mary Turner	The Sweet o' the Year
SAWYER, Frank E.	Spanish Romance
WARD-STEPHENS,	The Rose's Cup

Published for
HIGH VOICE MEDIUM VOICE LOW VOICE

Price \$1.25 Each Volume

(Schmidt's Educational Series Nos. 83, 84, 238, 239)

THE ARTHUR P. SCHMIDT CO.

BOSTON
120 Boylston Street

NEW YORK
8 West 40th Street