

# MISSISSIPPI RIPPLES

Waltz Song  
by JAMES F. HANLEY  
and MARY EARL  
REG. U.S. PAT. OFF.



Music  
PUBLISHERS  
47th STREET  
New York

MADE IN U.S.A.

STARMEYER



Try this over on your Piano.

# Stay Home, Little Girl, Stay Home

By LEW BROWN and  
JAMES F HANLEY

## CHORUS

Stay home lit-tle girl, stay home \_\_\_\_\_ Don't roam, lit-tle girl, don't  
roam, \_\_\_\_\_ The one who would lure you from those you love so, Will  
take you and fool you and then let you go, The girl who stays  
home is a fool they may say, But she's just the kind that they

*p-f*

Copyright MCMXXIII by Shapiro, Bernstein & Co. Inc. Cor. Broadway & 47th Street, New York  
International Copyright Secured All Rights Reserved  
Propiedad Asegurada Para La Republica Mexicana MCMXXIII Todos Los Derechos Reservados

Complete Copies may be had where you bought this

# Mississippi Ripples

3

By JAMES F HANLEY  
and MARY EARL

Reg. U. S. Pat. Off.

Moderato

Chimes Chimes

The piano introduction is in 3/4 time, marked Moderato. It features a treble and bass staff. The treble staff begins with a whole rest, followed by a series of eighth notes and chords. The bass staff starts with a quarter note, followed by a series of chords. There are two 'Chimes' markings above the treble staff, each with a dotted line and a vertical line indicating a specific rhythmic pattern.

I was born a - long the Mis - sis - sip - pi  
When it's moon - light on the Mis - sis - sip - pi

The first line of the song features a vocal melody in the treble staff and piano accompaniment in the bass staff. The lyrics are: "I was born a - long the Mis - sis - sip - pi / When it's moon - light on the Mis - sis - sip - pi". The piano accompaniment consists of chords in the bass staff, with a piano (p) dynamic marking.

And no mat - ter where I chance to roam  
Child - hood dreams come drift - ing back to me

The second line of the song features a vocal melody in the treble staff and piano accompaniment in the bass staff. The lyrics are: "And no mat - ter where I chance to roam / Child - hood dreams come drift - ing back to me". The piano accompaniment consists of chords in the bass staff.

Mem - 'ry takes me back once more  
And it seems I'm kneel - ing there

The third line of the song features a vocal melody in the treble staff and piano accompaniment in the bass staff. The lyrics are: "Mem - 'ry takes me back once more / And it seems I'm kneel - ing there". The piano accompaniment consists of chords in the bass staff.

International Copyright Secured

Copyright MCMXXII by Shapiro, Bernstein & Co. Inc. Cor. Broadway & 47th Street New York

All Rights Reserved

Propiedad Asegurada Para La Republica Mexicana MCMXXIII Todos Los Derechos Reservados

To that Mis - sis - sip - pi shore And the place I  
 Just to say my ev - 'ning pray'r As in days gone

call my Home Sweet Home:  
 by at moth - er's knee:

CHORUS (*Accent Chimes Strongly*)

Mis - sis - - - sip - pi, rip - pling on your way

Mis - sis - - - sip - pi I miss you more each

day \_\_\_\_\_ In my \_\_\_\_\_ dream-ing \_\_\_\_\_

This system contains the first line of the song. The vocal line is in a treble clef with a key signature of two flats (Bb, Eb). The piano accompaniment consists of two staves: the right hand in a treble clef and the left hand in a bass clef. The music features a mix of eighth and quarter notes, with some notes beamed together. The lyrics are written below the vocal line with horizontal lines indicating the syllable placement.

Stars are \_\_\_\_\_ gleam-ing \_\_\_\_\_ On you \_\_\_\_\_

This system contains the second line of the song. The piano accompaniment includes a section labeled "Chimes" in the right hand, indicated by upward-pointing triangles above the notes. The lyrics continue with "Stars are", "gleam-ing", and "On you".

beam-ing \_\_\_\_\_ Mis - sis-sip-pi rip - ples, rip-ple on for - ev - er

This system contains the third line of the song. The piano accompaniment includes another section labeled "Chimes" in the right hand. The lyrics are "beam-ing", "Mis - sis-sip-pi", "rip - ples, rip-ple on", and "for - ev - er".

Mis - sissip-pi rip - ples, ripple on. on.

This system contains the final line of the song, which includes a first ending (marked "1.") and a second ending (marked "2."). The lyrics are "Mis - sissip-pi", "rip - ples, ripple on.", and "on.". The piano accompaniment concludes with a final chord and a fermata.



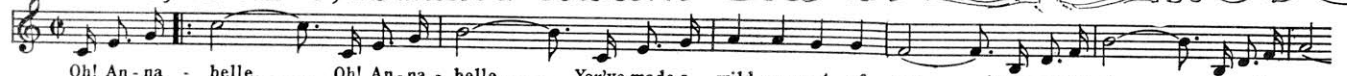
TRY THESE OVER

YOUR MUSIC DEALER

CARRIES THESE SONG HITS  
for YOUR PIANO, PHONOGRAPH  
or YOUR PLAYER PIANO

**ANNABELLE**

That dancy Tune — By the writers of "GEORGETTE"

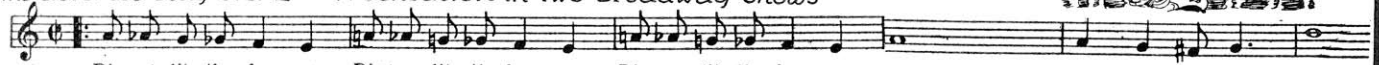


Oh! An - na - belle, — Oh! An - na - belle, — You've made a wild man out of me, — 'Cause ev-ry day — in ev-ry way

Copyright MCMXXIII by Shapiro, Bernstein & Co. Inc.

**THE GOLD-DIGGER (DIG A LITTLE DEEPER)**

The cleverest song ever — A sensation in Two Broadway Shows



Dig a' lit - tle deep - er Dig' a lit - tle deep - er Dig a lit - tle deep - er, dear, Dont mind if hes old,

Copyright MCMXXIII by Shapiro, Bernstein & Co. Inc.

**UNDERNEATH THE SIP SIP SIPPY MOON**

Our southern rag offering for the new season

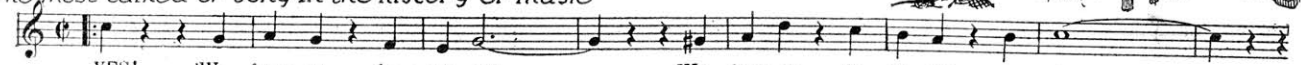


Un - der - neath the Sip Sip Sip - py moon, — Sweet song birds croon, — While lovers spoon — You'll hear those darkies

Copyright MCMXXIII by Shapiro, Bernstein & Co. Inc.

**YES! WE HAVE NO BANANAS**

The most talked of song in the history of music



YES! We have no ba - na - nas — We have no ba - na - nas to - day —

Copyright MCMXXIII by Skidmore Music Co. Inc.

**STINGO STUNGO**

A song comic de-luxe — a laugh in ev'ry line

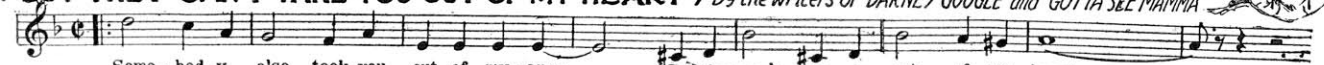


I've been stung by bum - ble - bees (Zzzz) Flies Mos - qui - tos too, (Zzzz) They made me

Copyright MCMXXIII by Shapiro, Bernstein & Co. Inc.

**SOMEBODY ELSE TOOK YOU OUT OF MY ARMS**

( BUT THEY CAN'T TAKE YOU OUT OF MY HEART ) By the Writers of "BARNEY GOOGLE" and "GOTTA SEE MAMMA"



Some - bod - y else took you out of my - arms — But they can't take you out of my heart —

Copyright MCMXXIII by Shapiro, Bernstein & Co. Inc.

**MAMMY'S LITTLE SILVER LINING**

A Beautiful Descriptive Ballad

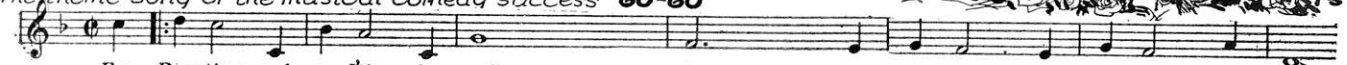


You're yo' Mam - my's lit - tle sil - ver li - ning Shi - ning when the clouds are dark and gray — It seems you,

Copyright MCMXXIII by Shapiro, Bernstein & Co. Inc.

**ROSE TIME AND YOU**

The theme song of the musical comedy success "GO-GO"



For Rose - time and you I'll be wait - ing Yes wait - ing for Rose - time and you

Copyright MCMXXIII by Shapiro, Bernstein & Co. Inc.

**MISSISSIPPI RIPPLES**

MARY EARL'S annual waltz creation

(Accent Chimes Strongly)



Mis - sis - - - sip - pi, — rip - pling — on your way — Mis - sis - - - sip - pi -

Copyright MCMXXII by Shapiro, Bernstein & Co. Inc.

THE GEM

America's Standard  
**DANCE FOLIO**  
for 1924  
JUST PUBLISHED  
Price 50¢ Postpaid

Piano Solo only