

# LADY OF THE EVENING

35

SAM H. HARRIS *presents*

## IRVING BERLIN'S

*Second Annual*

# MUSIC BOX REVUE

### 1922-23

WORDS and MUSIC BY  
**IRVING BERLIN**

LADY OF THE EVENING	.60
PACK UP YOUR SINS AND GO TO THE DEVIL	.60
CRINOLINE DAYS	.60
PORCELAIN MAID	.60
WILL SHE COME FROM THE EAST? (EAST-NORTH-WEST OR SOUTH)	.60
MONT MARTRE	.60
THE LITTLE RED LACQUER CAGE	.60
BRING ON THE PEPPER	.60
DIAMOND HORSESHOE	.60
THREE CHEERS FOR THE RED, WHITE AND BLUE	.60
I'M LOOKING FOR A DADDY LONG LEGS.	.60
TAKE A LITTLE WIFE	.60
SELECTION	1.00

Staged by HASSARD SHORT

Irving Berlin Inc.  
MUSIC PUBLISHERS  
1607 Broadway New York

PRINTED IN U.S.A.





ONE OF THE OUTSTANDING SONG HITS  
FROM

IRVING BERLIN'S  
SECOND ANNUAL  
MUSIC BOX REVUE

# CRINOLINE DAYS

CHORUS

By IRVING BERLIN

*Slowly with expression*

In those dear old Crin-o-line days,—

Old fash-ioned peo - - ple with their old fash-ioned ways.—

When the girl a fel-low court - - ed

Copyright MCMXXII by IRVING BERLIN Inc. 1607 Broadway, New York  
International Copyright Secured All Rights Reserved

**Copies On Sale Wherever Music Is Sold**  
This Number can also be had for your Phonograph or Player Piano

# Lady Of The Evening

By IRVING BERLIN

Moderato con molto espressione

*p*

Af - ter the gray of a long drear - y day Comes the eve - ning.  
 Af - ter the sun, when it's days work is done Comes the eve - ning.

*p* *broader*

Peace - ful and calm as a shel - ter - ing palm Is the eve - ning  
 Then with the night comes the Ang - els who light Up the eve - ning

Day time has gone to rest, There in the gold - en  
 There in the sky they stand, Each with a torch in

*mf* *p* *L.H.*

Arranged by  
Chas. N. Grant

Red. \*

west hand                      Soon lit - tle stars will ap - pear in the sky,  
 Then one by one, lit - tle stars in the sky,

Seem - ing to say "We are here hush - a - bye."  
 Look down and say "We are here hush - a - bye!"

*Lunga*

*p* *sostenuto* *poco ritard* *molto rit.*

**CHORUS**  
*Slowly with expression*

Eve - ning                      La - dy of the eve - ning,

*p* *delicato* *dolce*

I can hear you call - ing                      me

*L.H. mf*

Call - ing                      While the shades are fall - ing                      Fall - ing ov - er

land and sea, \_\_\_\_\_ You can make the

*cresc.* *f* *p molto espress.*

cares and troubles that fol-lowed me through the day; "Fold their tents just

*mf L.H.* *p molto espress.*

like the A-rabs and si-lent-ly steal a-way." Eve-ning \_\_\_\_\_

*L.H.*

La-dy of the eve-ning, \_\_\_\_\_ I hear you call-ing

*ad lib 2d time* *dim.*

me. me. \_\_\_\_\_

*f* *p* *rall.* *allarg.* *p* *morendo p*





# SONG GEMS

FROM

## IRVING BERLIN'S

SECOND ANNUAL

# MUSIC BOX REVUE

### CHORUS Lady Of The Evening



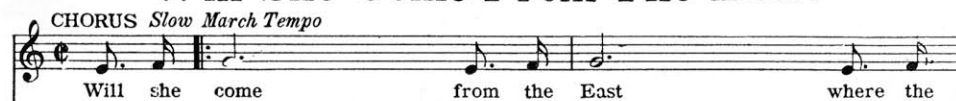
### CHORUS Pack Up Your Sins And Go To The Devil



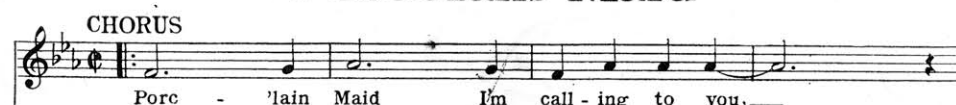
### CHORUS Crinoline Days



### CHORUS Will She Come From The East?



### CHORUS Porcelain Maid



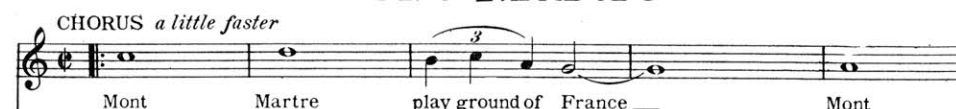
### CHORUS Bring On The Pepper



### CHORUS The Little Red Lacquer Cage



### CHORUS Mont Martre



Copyright MCMXXII by IRVING BERLIN Inc., 1607 Broadway, New York

International Copyright Secured

All Rights Reserved

# COPIES ON SALE WHEREVER MUSIC IS SOLD